

An aerial photograph of a coastal landscape in Alaska. The foreground and middle ground are dominated by dense, dark green coniferous forests. A large, calm body of water, likely a bay or fjord, winds through the forested land. Several small, tree-covered islands and peninsulas are scattered throughout the water. In the background, a range of blue-toned mountains stretches across the horizon under a pale, overcast sky. The overall scene is serene and highlights the natural resources of the region.

ALASKA FOREST RESOURCES & PRACTICES ACT (FRPA) Overview

October 15, 2021 for Division of Forestry
Resources Meeting

Joel Nudelman
Forest Practices and Resource forester

Alaska Department
Of Natural Resources
Division of Forestry

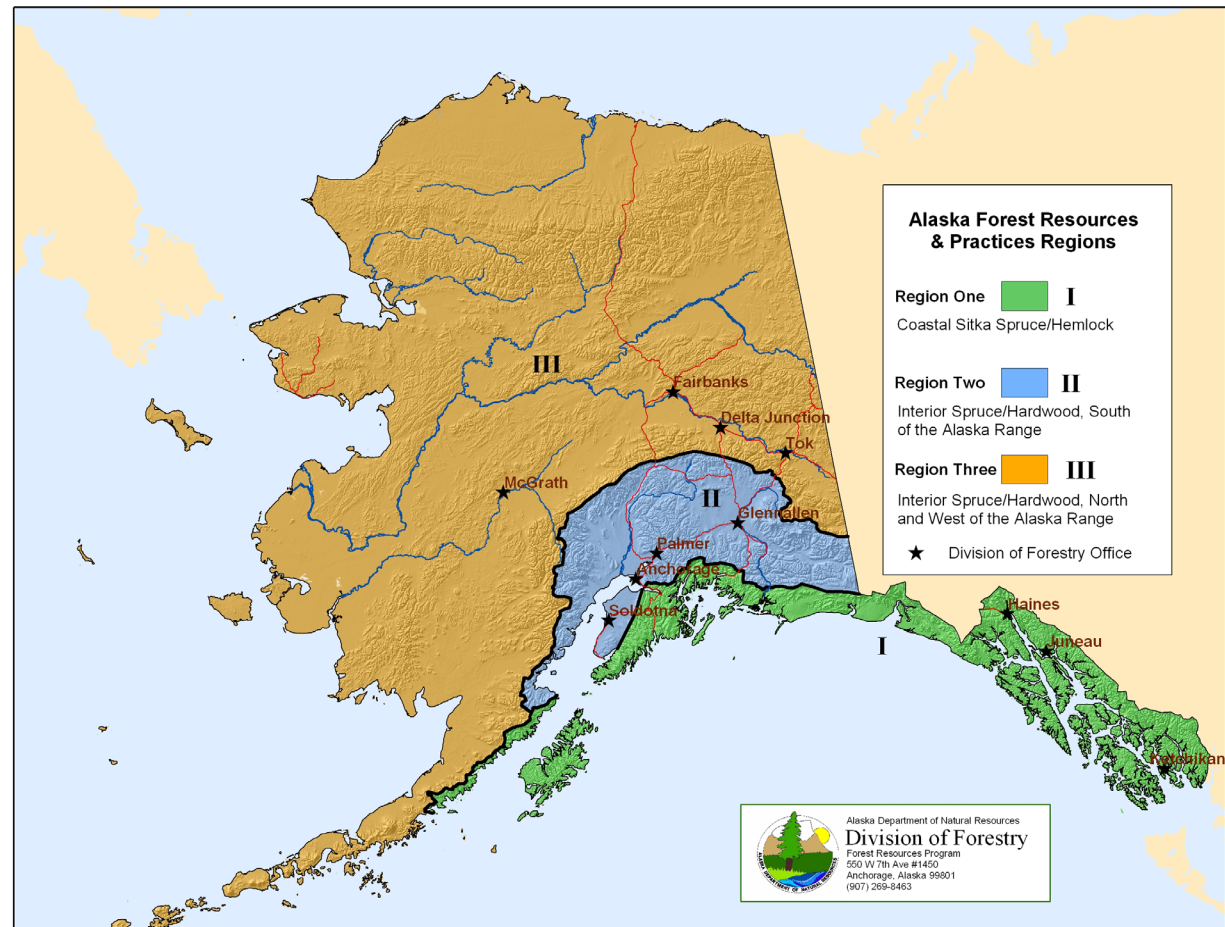
FRPA Focus

FRPA (AS 41.17)

- Governs how commercial timber harvesting, reforestation, and timber access occur on state, private, and municipal land.
- Establishes the Division of Forestry and Board of Forestry
- Establishes the State Forest system

Regions

BMPs are tailored to the forest types, climate, and topography of each region





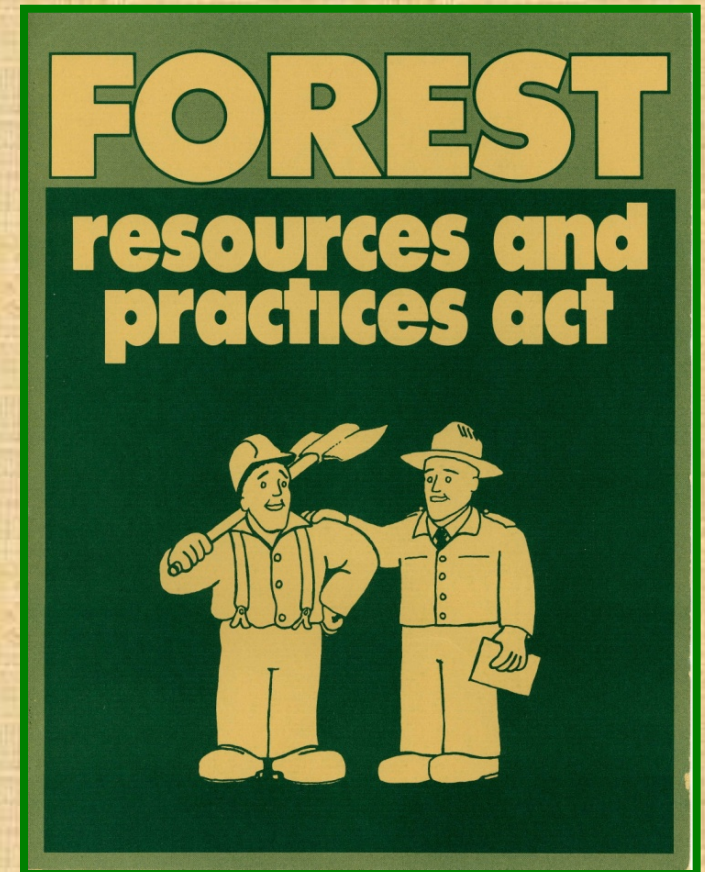
Applicability

- Commercial forest operations
 - Region I: >10 acres
 - Region II: >40 acres
 - Region III: >40 acres for forest landowners that own more than 160 acres in total.
- All commercial harvest operations that encompass or border surface waters or a riparian area, regardless of size.

History - Passage & Revisions

Original Act passed in 1978

- The Act was developed and endorsed by diverse interests reaching a common and fair understanding.
- It established a program for regulating harvest operations based on providing notice to regulatory agencies of the activity.
- It contained no specific standards for management of riparian areas.



A yellow crane is positioned in a forest clearing, with a snow-capped mountain in the background. The crane is lifting a large log. The scene is set in a mountainous area with dense evergreen forests.

**ALASKA
Forest Resources
and
Practices
Regulations**

First Edition
Effective February 18, 1981



STATE OF ALASKA
DEPARTMENT OF NATURAL RESOURCES

**Field Regulation
Booklet**

- The first regulations for harvest operations were adopted in 1981.
- A separate Field Manual contained best management practices (BMPs) which were advisory.

Key provisions – Coordination

- 1-stop shopping for forest operation compliance with state and federal clean water standards.
- DNR is the lead agency for FRPA implementation
- DNR must give due deference to DEC for water quality decisions. DOF must give due deference to ADF&G for fish habitat issues on private land, and for fish and wildlife habitat on public land.





Key provisions - DPOs

Detailed Plan of Operations required prior to operations on non-state land.

- DNR, DEC, and ADF&G review DPOs for consistency with FRPA and its regulations
- Agencies can require site inspection and check stream classification
- This is not a permit process; timber operations can proceed if the agencies do not respond within the set time frame.
- Change in operations (95.230)

Key provisions – Inspections

- DNR may inspect forest land and activities in conjunction to ensure compliance with FRPA and its regulations.
- DEC & ADF&G have the same authority to enforce their own laws and regulations on forest land.
- DNR, DEC, and ADF&G coordinate inspections.
- Inspections are routinely conducted, and may occur before, during, and after operations.
- Compliance monitoring score sheets are part of inspections.



Key provisions – Reforestation

- Prompt reforestation unless the land will be converted to another use
- Exemption for harvest areas significantly composed of dead or dying trees





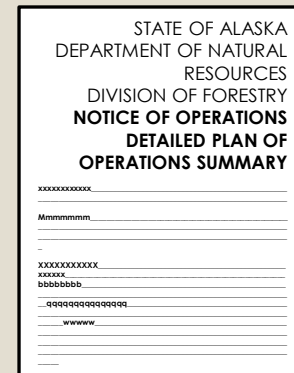
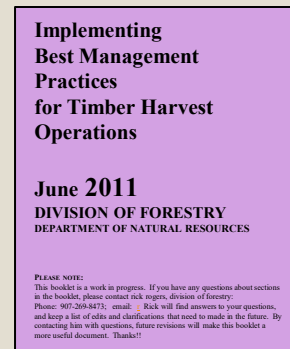
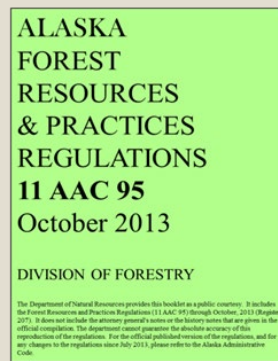
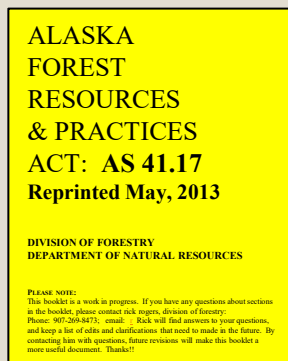
Key provisions – Enforcement

DOF has authority to enforce the Act through

- directives,
- Notices of violation,
- stop work orders, and
- civil fines.

Implementation actions

- Statutory amendments
- Regulatory amendments
- Implementation fieldbook
- DPOs and Forest Land Use Plans
- Training
- Research
- Monitoring





Detailed Plan of Operations (DPO) Workflow

AUG 11 2009



WHICH LANDOWNERS MUST SUBMIT A DPO?

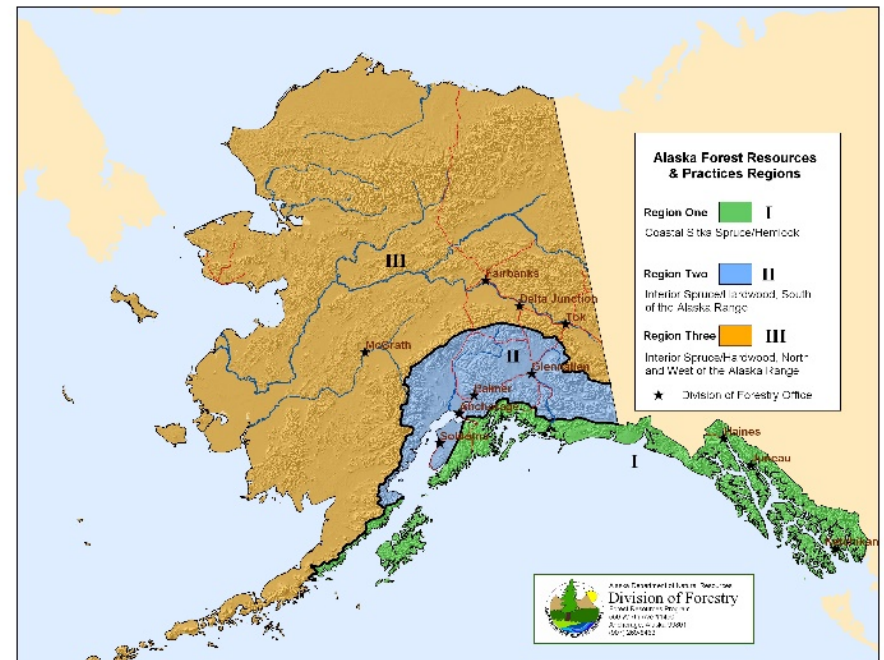
- The operator shall provide DOF with a DPO before beginning forest operations on
 - Municipal land,
 - private forest land, including mental health trust land,
 - state land not managed by the division, including university land

Sec. 41.17.090(c); 11 AAC 99.140(a)

ANNUAL DPO TIMELINE

- Region I...based on calendar Year
- Region II and III...one year after start date
- DPO's must be renewed if not completed within timeframe.

11 AAC 95.220(d)





DPO REVIEW: REQUIRED INFO

- The name, address, and approving signatures of the forest landowner, timber owner, and operator;
- Dates that the operation is expected to begin and end
- Location map (1:63,360 or better)
 - Unit boundaries
 - New and existing road system
 - Approximate locations of material extraction sites
 - Surface waters

DPO REVIEW: REQUIRED INFO CONT.

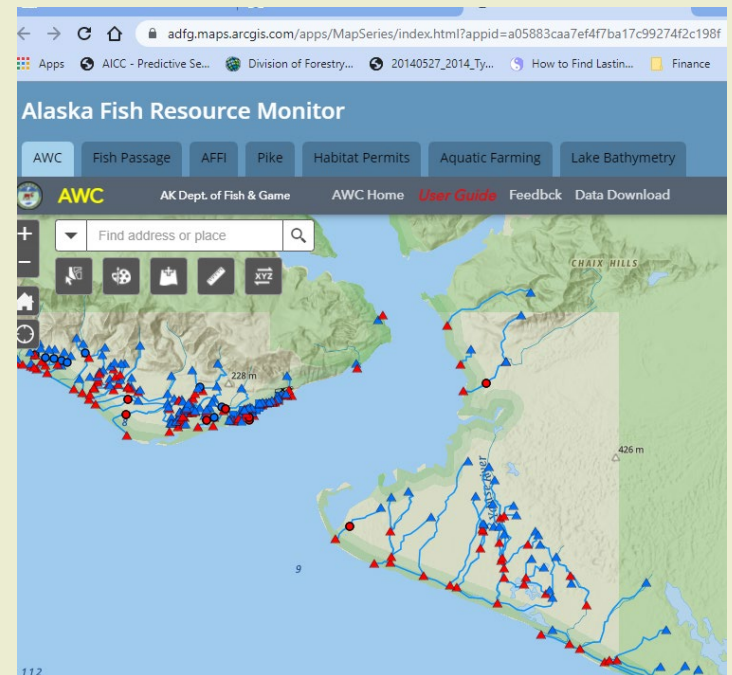
- The location and, if applicable, the classification of known surface waters that abut or are within harvest units (see [FRPA 101 D](#));
- The approximate location of
 - proposed stream crossings;
 - stream crossings requiring approval by the ADF&G under AS 16.05.871 (catalogued anadromous waters)
 - surface waters for which the operator requests ADF&G determine or verify the presence of fish by a field inspection

[11 AAC 95.220\(a\)\(5\)](#)

DPO REVIEW: ADFG ANADROMOUS WATERS CATALOG

- Fish streams (ADFG Alaska Fish Resource Monitor website:

<https://adfg.maps.arcgis.com/apps/MapSeries/index.html?appid=a05883caa7ef4f7ba17c99274f2c198f>



REQUIRED INFO: REFORESTATION

- Reforestation and site preparation methods, including
 - the preferred target species,
 - regeneration technique
 - site preparation method

11 AAC 95.220(a)(10), .375(a)

DPOS: VARIATION REQUESTS

- Any requests for variation, including
 - Variations from riparian standards or other standards in FRPA or its regulations (11 AAC 95.235)
 - Small streamside variations in Region (11 AAC 95.240)

11 AAC 95.220(a)(14)

ALLOWED USES IN RIPARIAN AREAS

- Road building for stream crossings (road construction standards **11 AAC 95.285(b)**)
- Water body crossings (bridge standards in **11 AAC 95.300**)
- Locating material extraction sites (material site standards in **11 AAC 95.325**)

DISTRIBUTION OF COMPLETED DPO

- Cover letter addressed to agencies:
 - ADFG (local area habitat biologist)
 - DEC (Jon Wendel, based in Juneau)
- Cc Operator
- Cc Landowner

11 AAC 95.220(e),(f)

ENTER DPO IN DATABASE

DOF - Timber Sales

Not secure | int.dnr.alaska.gov/WebTimberSales/controller?gsid=7CB758DB8AD288B7D7515328AE5AB230.tomcat-89

Apps AICC - Predictive Se... Division of Forestry... 20140527_2014_Ty... Finance SOA websites DNR websites Other book

State of Alaska myAlaska My Government Resident Business in Alaska Visiting Alaska State Employees

Alaska Department of Natural Resources search

Natural Resources State of Alaska

Natural Resources > Forestry > Timber Sales Theme: UI lightness Logout (Logged in as: jinudelman) Not You?

Timber Sales Web Application

Select from the following options:

- Maintain [Offerings](#)
- Maintain [Domains](#)
- Maintain [Purchasers](#)
- Maintain [Detailed Plans of Operations \(ERPA\)](#)
- Maintain [ERPA Operators](#)
- Maintain [ERPA Land Owners](#)
- View [Transactions](#)
- View [Reports](#)
 - [Commercial Use Timber Offered and Sold \(Cut and Sold\) 00705](#)
 - [Active Timber Sale Contracts \(Detail\) 00706](#)
 - [Commercial Timber Sales - Harvest Information 00701](#)
 - [Commercial Timber Sales Sold \(Detail\) 00702](#)
 - [Sales By Total Volume \(Detail\) 00710](#)
 - [Commercial Timber Sales Offered but Not Sold \(Detail\) 00707](#)
 - [Over the Counter Timber Sales Sold \(Detail\) 00709](#)
 - [Personal Use Activity \(Summary\) 00703](#)
 - [Personal Use Sales \(Detail\) 00700](#)
 - [Personal Use Volume Issued \(Summary\) 00704](#)
 - [Beach Log Salvage \(Detail\) 00708](#)
 - [Detailed Plans of Operations \(ERPA\) 00711](#)

Maintain [LAS Case File](#).

Contact the Timber Sales Manager via email at dof.timbersales_admins@alaska.gov

TIMING – 30 DAY REVIEW

- DOF shall review the plan to determine if the operations are consistent with FRPA and its regulations.
- Operations may begin under the plan when the 30-day period expires or upon notice from DOF that the review has been completed, whichever occurs first

AS 41.17.090(e), .098(f), .116(a)

DPO REVIEW

- DOF will provide a written review of a DPO within 30 days
- DOF need not consider comments received more than 20 days after the date a DPO is filed
- DOF will forward copies of all comments to the forest landowner.

11 AAC 95.225(d)

Field Inspections

Overview

Fish Habitat Factors

- ▶ short-term & long-term LWD source
- ▶ stream bank stability
- ▶ channel morphology
- ▶ water temperatures
- ▶ stream flows
- ▶ water quality
- ▶ adequate nutrient cycling
- ▶ food sources
- ▶ clean spawning gravels
- ▶ sunlight

AS 41.17.115(a)



Compliance Score Sheets

Revised 2/22/18

FOREST PRACTICES COMPLIANCE SCORE SHEET REGION I

Operation Name: Naukati (Yatuk)
Notification Number: SSE 19-01
Unit #: 11,9,10 and 6 Road #: All
Agency Presence: ☐ ADFG ☐ DEC (if applicable)

Forester's name and Area Office: Joel Nudelman, SE
Date: 6/23/24
Road Class: ☒ A ☐ I ☐ C

Land Owner: MHT
Operator: Viking

BMP		Rating					
		5	4	3	2	1	n.a.
GENERAL							
815b	Disposal of Petroleum Products	■	■	■	■	■	■
815b	Disposal of Scrap Metal	■	■	■	■	■	■
RIPARIAN AREAS							
265	Classification of Surface Water Bodies	■	■	■	■	■	■
280d5	Sidecasting Material in Riparian Areas	■	■	■	■	■	■
285b	Locating Roads in Riparian Areas	■	■	■	■	■	■
350c	Leaving High Stumps in Riparian Areas	■	■	■	■	■	■
355e1	Falling Trees into Retention Areas	■	■	■	■	■	■
360c4	Cable Yarding Adjacent to Riparian Areas	■	■	■	■	■	■
365b	Ground Skidding in Riparian Areas	■	■	■	■	■	■
TIMBER HARVESTING							
345a,b	Landing Location, Construction, & Operation	■	■	■	■	■	■
350a	Min. Disturbance Adjacent to Surface Waters	■	■	■	■	■	■
350b	Avoid Disturbing LWD in Surface Waters	■	■	■	■	■	■
355c	Removal of Trees from Surface Waters	■	■	■	■	■	■
355d	Bucking of Trees in Surface Waters	■	■	■	■	■	■
360a,b	Cable Yarding Adjacent to Surface Waters	■	■	■	■	■	■
360c1-3	Obtaining Deflection when Cable Yarding	■	■	■	■	■	■
365f	Proper Skidding Techniques Followed	■	■	■	■	■	■
365g	Stabilizing & Water Barring Skid Trails	■	■	■	■	■	■
ROAD CONSTRUCTION							
290c	Erosion Controls on Unstable Soils	■	■	■	■	■	■
290d	End Haul of Waste Material	■	■	■	■	■	■
290e	Fall Away from All Surface Waters	■	■	■	■	■	■
290j	Disposal of Material in Suitable Sites	■	■	■	■	■	■
DRAINAGE							
295b	Adequate Number of Drainage Structures	■	■	■	■	■	■
295b	Drainage Structures on all Natural Drainages	■	■	■	■	■	■
295d	Roads Outsloped or Ditched on Uphill Side	■	■	■	■	■	■
295f	Relieve Ditches Away from Surface Waters	■	■	■	■	■	■
295i	Do Not Discharge onto Unprotected Slopes	■	■	■	■	■	■

BMP		Rating					
		5	4	3	2	1	n.a.
BRIDGES							
300a1	Install Relief Culverts on Approaches	■	■	■	■	■	■
300a2	Anchor One End of Log Bridge	■	■	■	■	■	■
300a3	Protect Earth Embankment from Erosion	■	■	■	■	■	■
300a4	Install Curbs & Filter Fabric	■	■	■	■	■	■
300a8	Min. Disturbance to Bed & Bank of Stream	■	■	■	■	■	■
300d	Do Not Enroach on Fish Stream	■	■	■	■	■	■
CULVERTS							
305a3	Culvert is not Perched	■	■	■	■	■	■
305a4	Culvert Terminates on Non-erodible Material	■	■	■	■	■	■
305a7	Clear of Mobile Slash	■	■	■	■	■	■
305a8	Catch Basins and Headwalls	■	■	■	■	■	■
305a9	Culverts are Proper Length	■	■	■	■	■	■
ROAD MAINTENANCE							
ACTIVE ROADS							
315b1	Culverts Functional	■	■	■	■	■	■
315b1	Ditches Functional	■	■	■	■	■	■
315b4	Roads Crowned or Outsloped	■	■	■	■	■	■
315b4	Shoulders Free of Berms	■	■	■	■	■	■
315b5,6	Grading Bridges	■	■	■	■	■	■
INACTIVE ROADS							
315c2	Surface Not Conducive to Erosion	■	■	■	■	■	■
315c3	Drainages Structures Clear	■	■	■	■	■	■
315c3	Ditches Clear	■	■	■	■	■	■
CLOSED ROADS (POST 1993)							
320b1	Road Condition Suitable to Control Erosion	■	■	■	■	■	■
320b2	Ditches Suitable to Reduce Erosion	■	■	■	■	■	■
320b4,c	Structures & Fills Removed from Surface Waters	■	■	■	■	■	■

Score:
Sum of all scores/(Sum #BMP's rated * 5) * 100 =

97 %

Comments: See inspection report for detail. No new road construction was reviewed on the Yatuk side during this inspection, so BMP's related to road construction, bridges or culverts were not reviewed.

What Happens to the Score Sheet Data?

Annual Report to the Board of Forestry: 2020 Forest Practices Act Effectiveness

Department of Natural Resources Division of Forestry



February 2021

Statewide Compliance Monitoring Report for 2020 Alaska Department of Natural Resources Division of Forestry

Table of Contents	Page
Region I BMP Compliance Ratings and Inspection Totals	1
Region I BMP Compliance Monitoring Summary For 2020	2
Region I Compliance Monitoring Summary For Previous 5 Years	3
Region II BMP Compliance Ratings and Inspection Totals	4
Region II BMP Compliance Monitoring Summary For 2020	5
Region II Compliance Monitoring Summary For Previous 5 Years	6
Region III BMP Compliance Ratings and Inspection Totals	7
Region III BMP Compliance Monitoring Summary For 2020	8
Region III Compliance Monitoring Summary For Previous 5 Years	9

Not secure | forestry.alaska.gov/frpa_effectiveness_monitoring

Division of Forestry... 20140527_2014_Ty... Finance SOA websites DNR websites Sustainable Salmon... Other bookmarks

Alaska Department of Natural Resources
DIVISION OF FORESTRY

FORESTRY HOME FOREST RESOURCES WILDLAND FIRE & AVIATION

Natural Resources / Division of Forestry

INTERAGENCY COORDINATION FOR FRPA EFFECTIVENESS MONITORING

Minutes

Approved minutes from annual Effectiveness Monitoring meetings

- January 21, 2021 FINAL (PDF)
- October 28, 2019 FINAL (PDF)
- December 10, 2010 FINAL (PDF)

Potential funding sources

- Sustainable Salmon Funding objectives, 2020 (PDF)
- Alaska Clean Water Action Grant information: <https://dec.alaska.gov/water/water-actions/>

Monitoring reports

- Division of Forestry FRPA Compliance Monitoring report, 2020 (PDF)
- USFS Tongass National Forest Annual Monitoring Report (PDF)

Links to GIS data

- ADFG's GIS Fish Resource Monitor
- Alaska DNR's Forestry Resources
- Alaska Statewide Forest Inventor
- State of Alaska Forestry Road Status

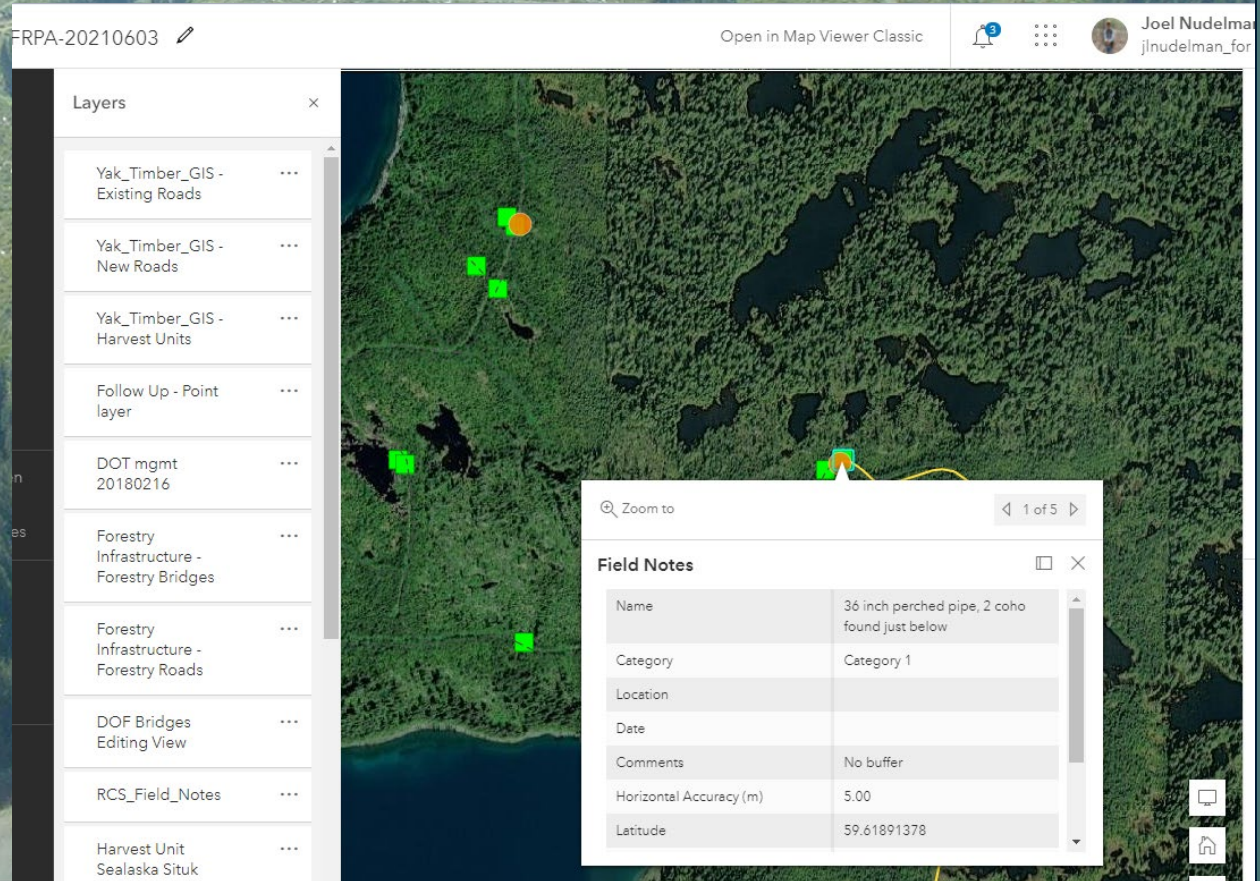
Presentations

Presentations from annual Effectiveness Monitoring meetings

- Windthrow Prediction: Greg Albrecht, ADFG Habitat, January 21, 2021 (Powerpoint)

Inspection Field Tools

- Tablet or smart phone
- Avenza or Esri Field Maps (formerly Collector)



A blue logging truck is driving away from the viewer on a gravel road that winds through a dense forest. The truck is carrying several large logs on its flatbed. The road is surrounded by lush green vegetation and tall evergreen trees. In the background, a misty or foggy mountain range is visible, adding a sense of depth and atmosphere to the scene.

Field Inspection Follow Up

- Go over all significant items with people present...operator, landowner, etc.
- Address problem areas
- Preferably complete score sheet in the field with operator.
- Write inspection report and send to operator, land owner and agencies, with scoresheet.

An aerial photograph of a vast, calm body of water, possibly a fjord or a large lake, surrounded by dense green forests. In the foreground, a wide, sandy beach curves along the shoreline. The water is a light blue-grey color, reflecting the sky. In the background, a range of snow-capped mountains stretches across the horizon under a cloudy sky. The text "The End! Questions?" is overlaid in white on the left side of the image.

The End!
Questions?