

# **DIVISION OF FORESTRY TOK AREA**

## **5 YEAR SCHEDULE OF TIMBER SALES 2013-2017**

**Revised Version  
April 1, 2013**



By  
Jeff Hermanns  
Tok Area Forester  
Revised by  
Peter Talus

Tok Area Forestry  
Department of Natural Resources  
State of Alaska  
P.O Box 10  
Tok Alaska 99780

Phone: (907) 883-1400  
Fax: (907) 883-5135

**DEPARTMENT OF NATURAL RESOURCES  
DIVISION OF FORESTRY  
TOK AREA FORESTRY**

**Five-Year Schedule of Timber Sales (FYSTS)  
2013 to 2017**

This Five Year Schedule of Timber Sales (FYSTS) provides information about planned and / or proposed timber sales and associated road construction in the Tok Management Area. We are attempting to plan for very quick changing times that we live in, with energy being the issue of our day. The potential use of energy from Alaska's forest is mostly untapped except for the traditional use of firewood. This could quickly change with the current political climate and our forest could play a major role in the energy requirements of our future for the Upper Tanana region and Alaska.

***Purpose of the Five- Year Schedule of Timber Sales***

This schedule is a scoping document that provides a time line that identifies timber sales, their volumes, and their locations. It must contain sufficient information to provide the public and the forest products industry with a basis to comment on proposed sale offerings.

The timber sales included in this schedule are part of a management policy that ensures a sustained yield of renewable forest resources and the integrated use of forest lands by a myriad of users, as guided by Alaska State statutes and regulations, the Tanana Valley State Forest Management Plan, and the State of Alaska DNR Tanana Basin Area Plan. Sales are located across a wide area of the forest land base, they vary in size, species composition, and developmental requirements. Emergency salvage sales, market conditions, sale preparation challenges, logistical constraints, funding and other considerations may cause some proposed sales to be dropped or moved between years.

Generally, the Division of Forestry may not offer a timber sale unless it has appeared on at least one of the two Five-Year Schedules preceding the sale. Sales are exempt from this requirement if they are: 160 acres or less; will cause substantial losses of economic value on salvage sales; or emergency sales in areas with fire; allow for the spread of damaging insect, or other natural threats; or preclude a local economic enterprise or forest management project that is in the state's best interest. (References: AS 38.05.113, AS 38.05.117, and 11 AAC 71.010)

***Timber Sale Land Base***

The forest management activities identified in this Five Year Schedule of Timber Sales 2013-2017 are consistent with the TBAP and the Tanana TVSF. The TVSF plans cover approximately 549,000 acres of forest designated lands in the Tok Area and the TBAP covers hundreds of thousands of acres in the Tok Area. Large tracks of forest are in a forestry designation but many areas have multiple designations such as wildlife habitat, recreation, and settlement may also be in this plan. These sales have the potential for

multiple project goals such as timber harvest, wildlife habitat enhancement, and development of settlement lands.

### ***Management Intent of the DOF Timber Sale Program***

The Division of Forestry's management intent for the Tok Area is to provide raw material available for harvest to the local / regional timber businesses of all sizes and Alaska's Eastern Interior communities for personal use. We are trying to meet new anticipated markets with new projects such as the proposed biomass projects and the existing industry while always maintaining the sustained yield of renewable resources.

Forest access roads will be constructed to meet standards stated within the TVSF Management Plan, the TBAP and Best Management Practices for the Alaska Forest Resources and Practices Act. Road construction is divided into two main categories winter road only and all-season road. As an example the Old Alaska Highway and Old Glen Highway sections will be reconstructed in certain locations to access the forest for timber sales and firewood cutting areas. Tok Forestry will work closely with ADF&G Biologists, the Upper Tanana Forty Mile Fish and Game Advisory Committee, private and native land owners on road access creating opportunities such hunting small and large game, timber harvest, and other activities while minimizing any negative impacts such as dumping on private lands. Road access development for local Tok residents is important for opportunities for harvesting personal use firewood and other traditional activities including harvesting mushrooms and berries. Control of access through use of gates and other means of road closure will be carefully considered for all road planned on state lands. DOF will address access development and roads in detail with each of the Best Interest Finding and Forest Land Use Plans for every proposed timber sale submitted for agency and public review.

Tok Area Forestry is working closely with the ADF&G biologist on timber harvest activities and projects that will benefit wildlife with habitat enhancement and to minimize impacts of road construction and timber harvest on fish and wildlife resources. Forestry will look at every timber harvest opportunity to maximize the habitat benefit for wildlife where feasible. Projects with dual goals of timber harvest and habitat enhancement are included in this plan. Tok Forestry is also working with biologist with Ruffed Grouse, The Alaska Moose Federation and other groups on future projects, equipment and techniques to improve habitat for wildlife.

## ***Timber Harvest***

### *Salvage Sales for Fire*

The Tok Area has had many large fires over the last 25 years with many being hundreds of thousands of acres including the 1990 Tok River Fire, the 2003 Tok River Fire, 2004 Taylor Complex fires, and the 2010 Eagle Trail Fire. Many of the large harvest areas in this plan are in the burned areas of these large fires. These fires account for massive acres of burned timber with salvage potential. Sawlog products are valuable from these fires but most of the harvest is for the high quality dry firewood. Salvage harvest activities both commercially and personnel use for firewood have increased tremendously. This is important with the high fuel oil prices of the last few years in the Tanana Valley and threw out state where natural gas is not available. This is expected to continue increasing in demand. As an example, fuel wood from Tok is trucked into the Copper River area by log truck loads due to the lack of available dry seasoned wood because of extensive Federal and private ownership. This plan seeks to utilize this burned material for house logs, lumber, biomass and firewood before it becomes useless from rot and deterioration. Planning for the salvage harvest and sales in these fires is very difficult for a number of reasons. The operable timber in these burns is very patchy, with very limited resources for updated photography and reconnaissance on the ground. It is important to note only a small portion of these areas will be harvest. Salvage sales are usually less than 40 acres and more often 10 acres or less in an individual sale. This makes for difficult harvest conditions with the extreme cold winter months in the Tok Area. This harvest period averages 80 working days over a four month window due to days lost to inoperable weather conditions. Much of the salvage harvest will require winter access on winter roads traveling across the Tanana River on an ice bridge. Depending on the weather ice bridges are usually frozen solid enough to begin using in mid December until the end of March. The salvage sales identified in the plan are mostly accessible and designed for winter road construction. Winter roads are very low impact on the environment and are very easy and efficient to construct in most situations. DOF works with ADF& G Habitat to obtain the required permits for Ice Bridge construction across fish streams. We will work with Tanacross Inc. and Tetlin corporations to develop roads that are compatible and work to achieve multiple benefits.

### *Blowdown Salvage Sales*

On September 17<sup>th</sup> a windstorm swept across the Eastern Alaska range from Delta east to Tok with wind in excess of 100 miles per hour. This storm caused major damage to the forest of the upper Tanana. The Division of Forestry plans to map this damage in the spring of 2013. Preliminary estimates are total destruction of stands on 50,000 acres plus with the total extent of damage on several hundred thousand acres of Tok area forest. This is extremely concerning for the Division of Forestry with regards to our public safety from wildfires and forest health from large bark beetle outbreaks. We believe we have a very narrow window to harvest much of this blowdown the next few years before substantial economic loss occurs due to rot and decay. Two of the sales listed in the schedule are the result of this wind storm. We anticipate several other large salvage sales the next couple years in the areas of blowdown from this wind storm.

### Personal Use Firewood

Personal Use firewood harvest by the public has continually and significantly increased over the years. It is very difficult to ascertain the full extent of the harvest. It is estimated that several thousand cord of firewood is harvested by the public every year in the Tok Area. Ninety-five percent (95%) of this harvest is in various fire salvage locations in the Tok Area. Individuals from Fairbanks, Delta, Tanacross, Dot Lake, Tetlin, Northway, Mentasta, Chistochina, Eagle, and Chicken and other areas have traveled to the Tok Area to harvest their firewood. Many of the Sale areas shown in the FYSTS are expected to be used mainly by personnel use firewood harvesters. Ninety percent of all personal use firewood is harvested in late fall and winter on frozen ground with snow using winter harvest trails and roads.

### Biomass (Wood Energy Harvest)

Biomass (wood energy) potential and demand has also become a serious consideration in our timber sale planning process. The Tok FYSTS attempts to address this issue with several sales specifically for biomass. The extent of the potential biomass market is difficult to ascertain at this time with several large feasibility studies currently being conducted. The Tok School is the only biomass user in the Tok Area as of today. The facility is operating and requires only an estimated 30 acres or 2500 tons of biomass chips a year with current demand being met with the past Hazardous Fuels Reduction Projects in the Tok Area. The Division of Forestry has received two written requests for large 25 year negotiated Timber Sale contracts for biomass in the Tok Area. The first request was three years ago from Alaska Power and Telephone and the other request was this spring from Youngs Timber. The scope of these proposed projects include generating several megawatts of electricity, district heat loops, densification plants and other uses that would require from 600 to over 2000 acres or more a year. The Division of Forestry is currently working on Preliminary Best Interest Finding for Tok to meet some of this potential demand. This FYSTS reflects the increase in demand for these two requests for biomass wood supply from state land. The wood energy biomass harvest in this FYSTS also takes into consideration the location and design to get the maximum benefit for priority hazardous fuel reduction around the Tok community. This harvest effectively mitigates the contiguous fuels within one mile of the values at risk in the community after five years of harvest at roughly 600 to 1000 acres per year. It is important to understand that this biomass harvest is not large clearcut harvesting. These sales and associated roads are all within a few miles of Tok. Many of these roads are designed for all season; long term forest management use and or to facilitate future use as settlement with subdivisions (currently, over half of the roads located on lands designated for settlement roads). The FLUPs will address details of harvest, roads and all other important considerations.

### ***Sustained Yield***

The Alaska Land Act requires that state land be managed for sustained yield, which is “the achievement and maintenance in perpetuity of a high level of annual or regular periodic output of the various renewable resources of the state land consistent with multiple uses” (AS 38.04.910). The Tanana Valley State Forest Periodic Sustainable Yield Analysis (Parsons, 2000) indicates that the annual sustained yield levels for the Tok

Management area with a forestry designation and typed as commercial timber stands are approximately 3539 acres. Thus the proposed average yearly harvest for this schedule, at 814 acres, constitutes less than a fourth of the sustained yield on Forest designated lands.

The proposed harvest on state lands with a Land Use Designation of Settlement with (4439 Gross Acres- 2663 Net Acres), are not part and are not required to be a part of the Sustained Yield calculations. In addition all of the salvage sales proposed in this Five Year Schedule of Timber Sales are not calculated into the Sustain Yield Calculations. Most of the timber stands identified in the wood energy sale for biomass wood energy around Tok average 3 inches in diameter. Historically these stands were not considered commercial timber stands and included in the Sustained Yield Calculations due to the lack of any stand to produce any sawlog sized timber. Wood energy sales are estimated to produce only 3 to 5 percent sawlogs.

Reforestation is completed through sale design which promotes natural seeding through adequate scarification techniques, seed trees, protection of existing saplings and pole timber during harvest operations, direct spot seeding, and if necessary planting of seedlings. Coppice regeneration with aspen is the expected and predominant first regeneration of most the sale areas. Sale areas, almost without exception, reforest to a mixed stand of white spruce, birch, aspen and poplar. Overstocking is as much of a concern as under-stocking. Reforestation progress is monitored year by year to ensure adequate stocking. Reforestation efforts have been successful in the Tok Area. There are no areas we are aware of that have not adequately regenerated. All details of regeneration will be covered in detail in the Preliminary Best Interest Finding (PBIF) and Forest Land Use Plan (FLUP) process.

The law, AS 41.17.220 – 230, requires Division of Forestry to develop a management plan for the Tanana Valley State Forest. The management plan guides many of the Division's management actions. The FYSTS is consistent with the guidelines and direction established in the TVSF Management Plan. Some of the sales may be for areas outside of the boundaries of the TVSF, and are proposed on state owned forestry classified lands; these sales are consistent with the TBAP. Both the TVSF Management Plan and the TBAP are available for review at the Tok Area Office.

### ***Small Timber Sales***

The Division of Forestry may negotiate small timber sales (AS 38.05.115) and must comply with regulations for these small sales as established in 11 AAC 71.045. Smaller operators have expressed an interest in small sales that fit their production capacity needs and are within their economic range. The Tok Area DOF will layout small sales as ground conditions and sale economics allow.

### ***Schedule Review Process***

The Review Draft Five-Year Schedule of Timber Sales is submitted for review and comment to several State agencies. Comments about specific timber sales from Alaska Department of Fish and Game Habitat Division, Alaska Division of Mining, Land and Water, Alaska Department of Environmental Conservation and other agencies are used to

draft a FLUP and PBIF for timber sales in years one and two (AS 38.05.112). The FLUP and PBIF gives site specific information for each sale describing the location, estimated timber volume, harvest methods, reforestation plan, access, and other potential uses of the sale area. Before any commercial timber sale of ten acres or larger is offered, DOF prepares a FLUP and PBIF and makes a finding that the sale is in the State's best interest. The schedule followed by individual FLUPs and PBIF is then distributed for review by the public. Public comments are considered, and revisions made as appropriate before the schedule is adopted. Sales where the FLUPs and PBIF have been previously reviewed by the public and agencies are noted on the schedule. Sales that have been reviewed and are currently available over the counter are also listed.

Should you wish to comment on this schedule, you may address your comments to: Jeffrey Hermanns Division of Forestry, P.O Box 10, Tok, AK 99780, and Fax to 883-5135. Electronic mail address: [dnr.fortok@alaska.gov](mailto:dnr.fortok@alaska.gov). For comments to be considered please respond with written comments received no later than by 4:30 PM May 1, 2013.

**Annual Sustained Yield**

Management Unit	Acres	Cubic Foot / Board Foot Volumes
Tok	3,539	4,449,200 / 14,815,836

**Annual Proposed Acres and Volume Green Standing Forest (No Salvage Harvest)**

2663 Net Acres of harvest are within Settlement lands Land Use Designation and are not part of the Annual Sustained Yield Calculations

Year	Acres Sawlog	Acres Wood Energy	Board Feet Sawlog / Tons Wood Energy
2013	253	553	1,874,000 / 27660
2014	160	1106	800,000 / 55321
2015	214	1106	1,070,000 / 55321
2016	264	1106	1,320,000 / 55321
2017	310	1106	1,320,000 / 55321
<b>FIVE-YEAR TOTAL</b>	<b>1201</b>	<b>4977</b>	<b>6,614,000 / 248,944</b>

Tok School – Is an example of Tok Wood Energy and Hazardous Fuels Reduction Sale Prescription and harvest technique in the Tok area. Leave islands of trees from 1/10<sup>th</sup> to 1 acre in size within 20 to 40 acre harvest units.







## **Sale Descriptions**

### **Calendar Year 2013-17**

#### **Small Sales**

The small sales will be located throughout northeastern interior of Alaska. Five to ten small sales per year totaling approximately 500 cords of fuelwood/yr will be offered. These sales are intended to provide small operators with timber to continue operating and producing heating resources for the local communities. The DOF intends to make this quantity and style of sale available for the duration of this planning document (2013-2016).

#### **Fire Salvage Sales**

The Tok area has had significant historic fire activity and these areas have been offered in several salvage sales in an attempt to recover some of the value of the timber. These areas are large and the estimated harvestable volumes correlate to the size volumes and acreages historically have not been realized for multiple reasons. Previous sales will be re-offered as long as the resource is economically recoverable.

##### **1988, 1990, 2004 Porcupine Fire Salvage Sales (2013-17)**

This sale area is located northeast of the town of Tok, on the north side of the Tanana River this sale area lays north of the east fork of Porcupine Creek. This salvage operation has seven areas identified which will be further divided into multiple additional units. This sale has an estimated harvest volume of 7,500 cords and 23.2 miles of road construction. This area has been previously offered in earlier FYSTS.

##### **1990 Tok River Salvage Sales (2013-17)**

This sale area is located immediately to the east of the community Tok south of the Alaska Highway. This area has had a multitude of harvest operations including personal use firewood gathering. This sale contains an estimated volume of 5,000 cords and the 12.7 miles of existing road would be used for access. This area has been previously offered in earlier FYSTS.

##### **2003 Tok River Salvage Sales (2013-17)**

Located due south of the 1990 Tok River Salvage this sale is 1,424 acres. The sale area is estimated to have 2,000 cords and 4 miles of existing winter road. This area has been previously offered in earlier FYSTS.

##### **Eagle Trail Fire Salvage Sales (2013-17)**

This sale area is composed of 7,834 acres and contains an estimated 7,500 cords of fuel wood requiring 14.9 miles of new winter road construction. The sale is located north of Moon Lake and the Tanana River with an eastern boundary of the Little Tanana and north to the Glaman Lake area.

##### **2004 South Porcupine Salvage Sales (2013-17)**

Located north of the of the Tanana River and Tok this sale area encompasses 7,075 acres and contains an estimated 7,500 cords of fuel wood. 13.1 miles of new winter road construction would be needed for access. This sale has been offered in the previous FYSTS.

Wolf Lake Salvage Sales (2013-17)

Due west of the 2004 South Porcupine Salvage sale the Wolf Lake Salvage Sale is north of the Tanana River and Tok. The Sale contains 12,755 acres and an estimated 10,000 cords of fuel wood. The sale would require approximately 17.6 miles of winter road and would be a continuation of the 2004 South Porcupine Salvage winter road. This sale has been offered in the previous FYSTS.

Clearwater Forest Health Salvage Sales (2013)

Located just off the Tok Cut-off of the Glen Highway, MP 109, south of Tok this sale is 160 acres and contains an estimated 800 MBF sawlog. Approximately two miles of all season road construction would be required.

Dry Creek Salvage Sale (2013)

Located south of the Alaska Highway at the community of Dry Creek this salvage sale is the result of a significant wind event which created extensive blowdown and stumpjack of the timber surrounding the community. The salvage operation will target sawlogs and biomass. This sale is estimated to contain a combined 2,500 MBF/ac sawlog and 40 tons/ac utility / biomass. This salvage sale would require 2 miles of road construction.

Johnson Slough Salvage Sales (2013-15)

Located just north of the community of Dry Creek this sale is north of the Alaska Highway and on both sides of the Johnson Slough and one unit is north of the Tanana River. Similar to the Dry Creek Salvage Sale this sale consists of blowdown and stumpjacked timber from the wind event that occurred September 16<sup>th</sup>. The sale has an estimated combined volume of 2,500MBF/ac and 40 tons/ac (fuelwood / biomass). 13 miles of new winter/ all season road construction would be needed.

**Biomass Harvest Sales**

There are 3 biomass sale offerings in the Tok Area. The sales total 9,543 acres and contain an estimated 276,609 tons. These sales would require an estimated 74.8 miles of temp and all season road.

1990 Loran Salvage and Wood Energy Sale(2013)

This sale is located east of Tok near the old Coast Guard Loran site. At 841 acres the sale contains an estimated 21,000 tons and would require two miles of all season road construction. This sale has been offered in the previous FYSTS.

Wood Energy Sale and Hazardous Fuels Reduction #1(2013)

Located on the west side of Tok in proximity of Eagle Subdivision, this sale is comprised of 587 acres and contains an estimated volume of 21,150 tons requiring 4.5 miles of new road construction.

*Tok Wood Energy and Hazardous Reduction (2013-17)*

Located within the Tok triangle this sale is composed of two different areas based on land designation. The areas south of the Alaska Highway are the settlement units and north of the highway are designated forestry units. The main objective of these sales is community protection through hazardous fuel reduction. The hazardous fuels will be sold as biomass to provide energy/heat or densified wood products. The settlement units cover 4,439 acres and contain an estimated volume of 133,170 tons. The forestry units cover 3,676 acres and contain an estimated 110,289 tons. The sale would require 63 miles of new road construction.

**Sawlog Sales**

*Block C Tok River Habitat Sale(2013)*

The third block of a three block sale, Block C is a 183 acre sale with an estimated volume of 1,524 MBF requiring 2.5 miles of winter/all season roads. The sale is located on the north side of the Tok River south of Tok between the High Road and the Tok Cutoff of the Glen Highway. Block C has seven sawlog units. This sale has been offered in the previous FYSTS.

*Unit 106 of Block B Tok River Habitat Sale(2013)*

Located south of the community of Tok on the northwest side of the Tok Cut-off of the Glen Highway near MP 106.5 unit 106 is comprised of 75 acres that contains an estimated 350 MBF. This sale has been offered in the previous FYSTS.

*Clearwater (2014)*

Located just off the Tok Cut-off of the Glen Highway, MP 109, south of the town of Tok this sale is 428 acres and contains an estimated 1,070 MBF. Three miles of all season road construction would access the sale. This sale has been offered in the previous FYSTS.

*Lookout Timber(2015-2016)*

Located seven miles south of Tok to the west of the Tok Cut-off of the Glen Highway, this sale is composed of five units totaling 528 acres with an estimated volume of 2640 MBF and would require 5 miles of new road construction. This sale would be offered for the calendar years 2015 and 2016.

*High Road(2017)*

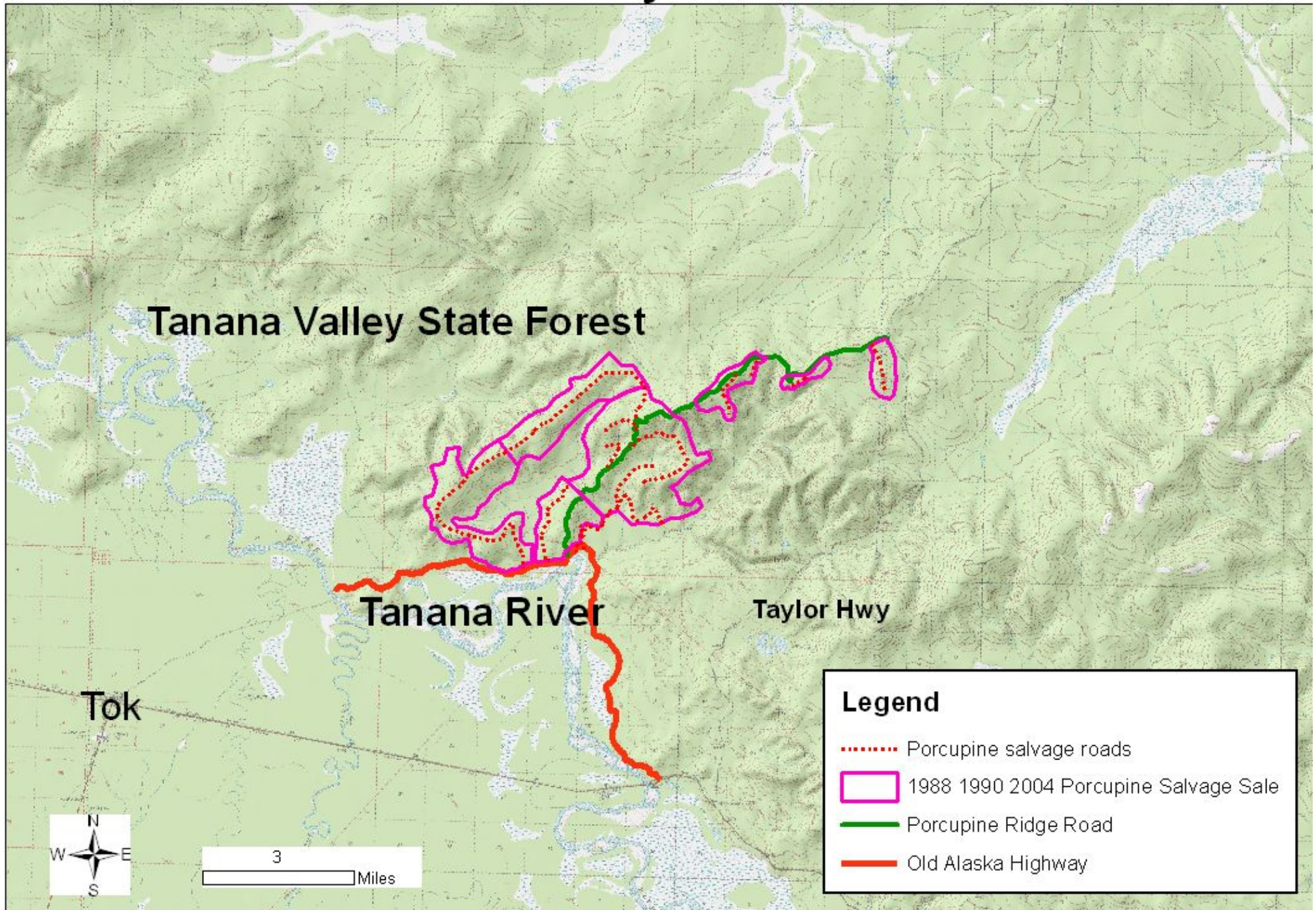
This sale is located south of Tok to the west of the Tok Cut-off of the Glen Highway on the High Road. The sale is 46 acres and contains an estimated 230 MBF and would require 0.9 miles of new road construction.

# Tok Area Five Year Schedule of Timber Sales 2013 - 2017

Sale #	Timber Sale Name	Total Sale Area Acres	Estimated Net Harvest Acres	Estimated Net Harvest Volume			Miles of Road	Type of Road	Management Plan, Tanana Basin Area Plan or	Management Plan Unit	Harvest Year
				MMBF	Tons^	Cords					
<b>Salvage Harvest</b>											
NC 1092 NC 1059	1988 1990 2004 Porcupine Salvage	7848	1500			7500.0	23.2	Winter / All Season	TVSF	13A	2013
NC 1065	1990 Tok River Salvage	6998	1000			5000.0	12.7	Winter / All Season	TBAP	6N, 6H1, 6H4, 6J2	2013-17
NC 1065	2003 Tok River Salvage	1424	400			2000.0	4.0	Winter	TBAP	6N	2013-17
	Eagle Trail Fire Salvage Sale	7834	1500			7500.0	14.9	Winter	TVSF / TBAP	6N	2013-17
NC 1066	2004 South Porcupine Salvage	7076	1500			7500.0	13.1	Winter	TVSF	13A	2013-17
NC 1094	Clearwater Forest Health Salvage	160	160	0.8			2.1	All Season	TVSF	14	2013
NC 1069	Wolf Lake Salvage Sale	12755	2000			10000.0	17.6	Winter	TVSF	13A	2013-17
NC 1104	Dry Creek Salvage Sale	665	665	16625.0	26600.0		2.0	Winter / All Season	TBAP	7N1	2013
NC 1105	Johnson Slough Salvage Sale	2290	2290	5725.0	91600.0		13.0	Winter / All Season	TVSF	10C, 10D	2013-15
Total		44095	11015	22350.8	118200.0	39500.0	102.6				
Average Acres / Volume Per Year			1224	11175.4	59100.0						
<b>Biomass Harvest</b>											
Tons*											
	Tok Wood Energy & Hazardous Reduction Total	8115	4869			405765.3	63.0	All Season	TVSF / TBAP	6N 6D1,6D2, 6H3	
NC 1060	Tok Wood Energy & Hazardous Reduction Settlement	4439	2663			221950.0		All Season	TBAP		2013-17
NC 1060	Total Wood Energy & Hazardous Reduction Forestry	3676	2206			183815.3		All Season	TVSF / TBAP		2013-17
NC 1093	Wood Energy Sale and Hazardous Fuels Reduction #1	587	243			29350.0	4.5	All Season	TBAP	6N, 6H3	2013-14
NC 1061	1990 Loran Salvage and Wood Energy Sale	841	420			42057.4	3.2	All Season	TBAP	6N 6J2, 6J3	2013-14
Total		9543	5532			276609.2	70.7				
Average Acres / Volume Per Year			1383			69152.3					
<b>Sawlog Green Timber Harvest</b>											
MBF											
NC 837	Block C Tok River Habitat Sale	184	184	1524.0			2.5	Winter / All Season	TVSF	14	2013
NC 837	Unit 106 Block B Tok River Habitat Sale	75	70	350.0			0.0	NA	TVSF	14	2013
NC 1064	Clearwater	428	214	1070.0			3.0	All Season	TVSF	14	2014
NC 1070	Lookout Timber	528	528	2640.0			8.0	All Season	TVSF	14	2014-17
NC 1062	High Road	46	46	230.0			0.9	All Season	TVSF	14	2017
Total		1262	1042	5814.0			14.4				
Average Acres / Volume Per Year			208	1162.8							

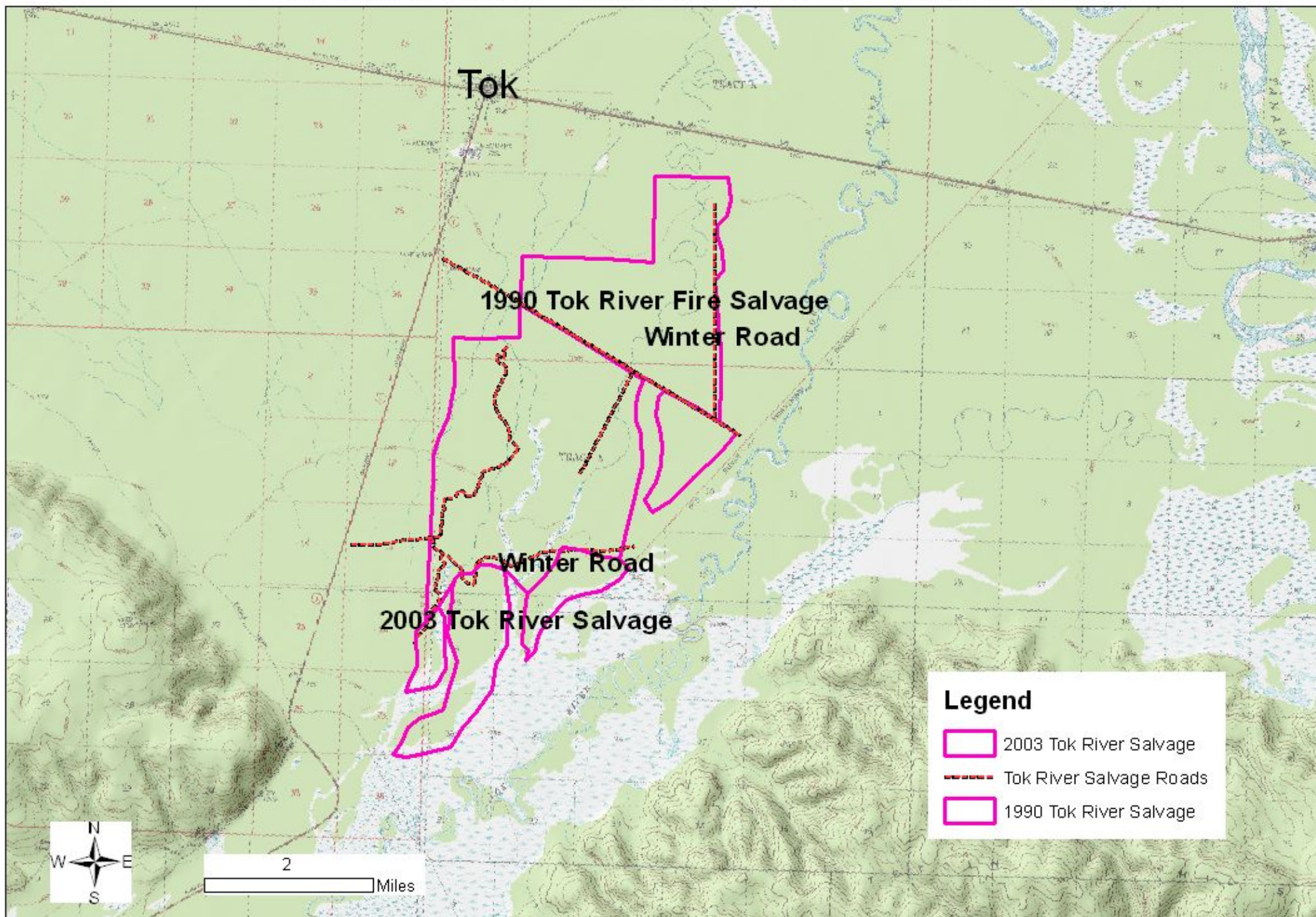


# 1988 1990 2004 Porcupine Fires Salvage Sale & Personal Use Tanana Valley State Forest



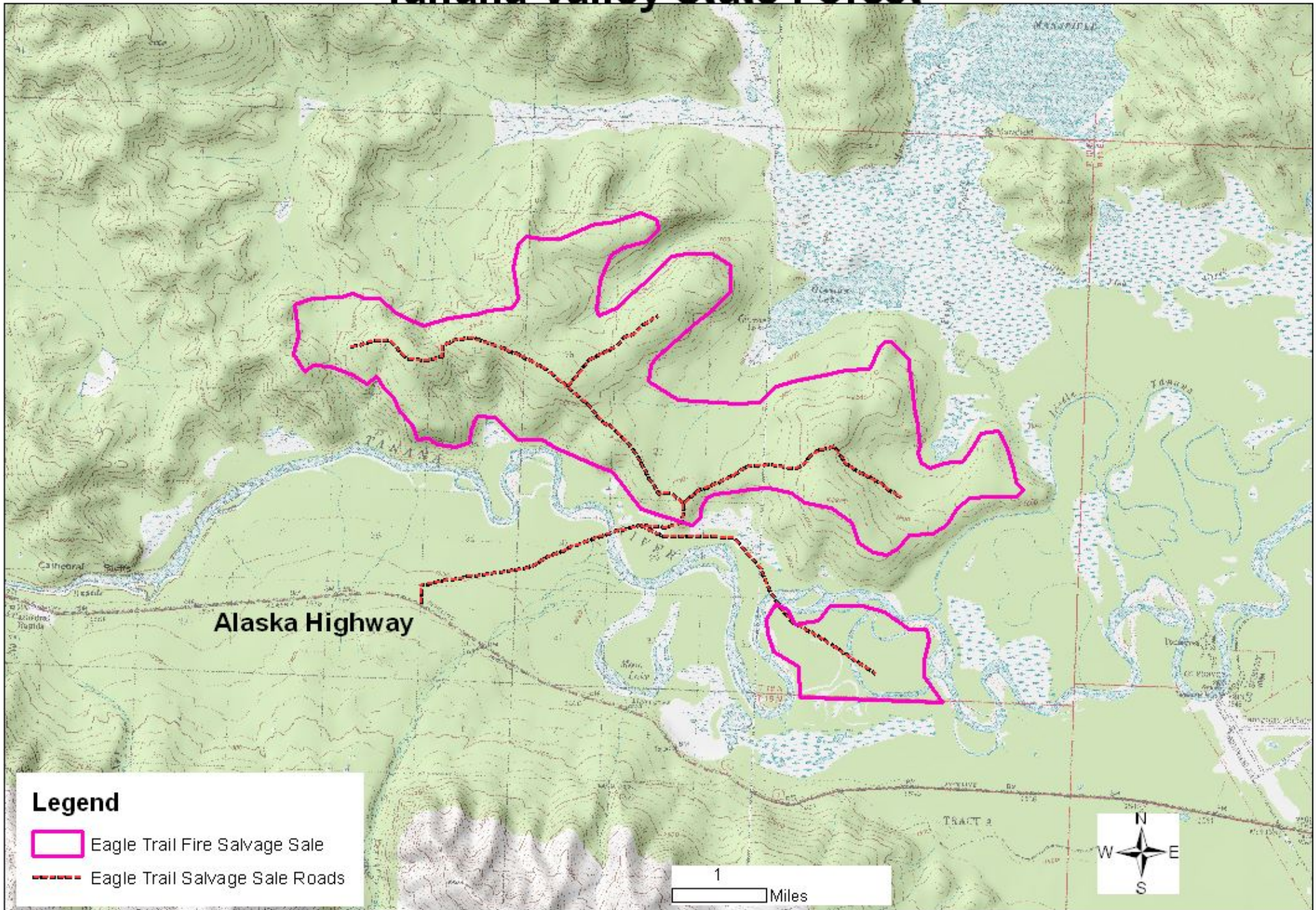


# 1990 & 2003 Tok River Fires Salvage Personal Use Firewood and Timber Sales



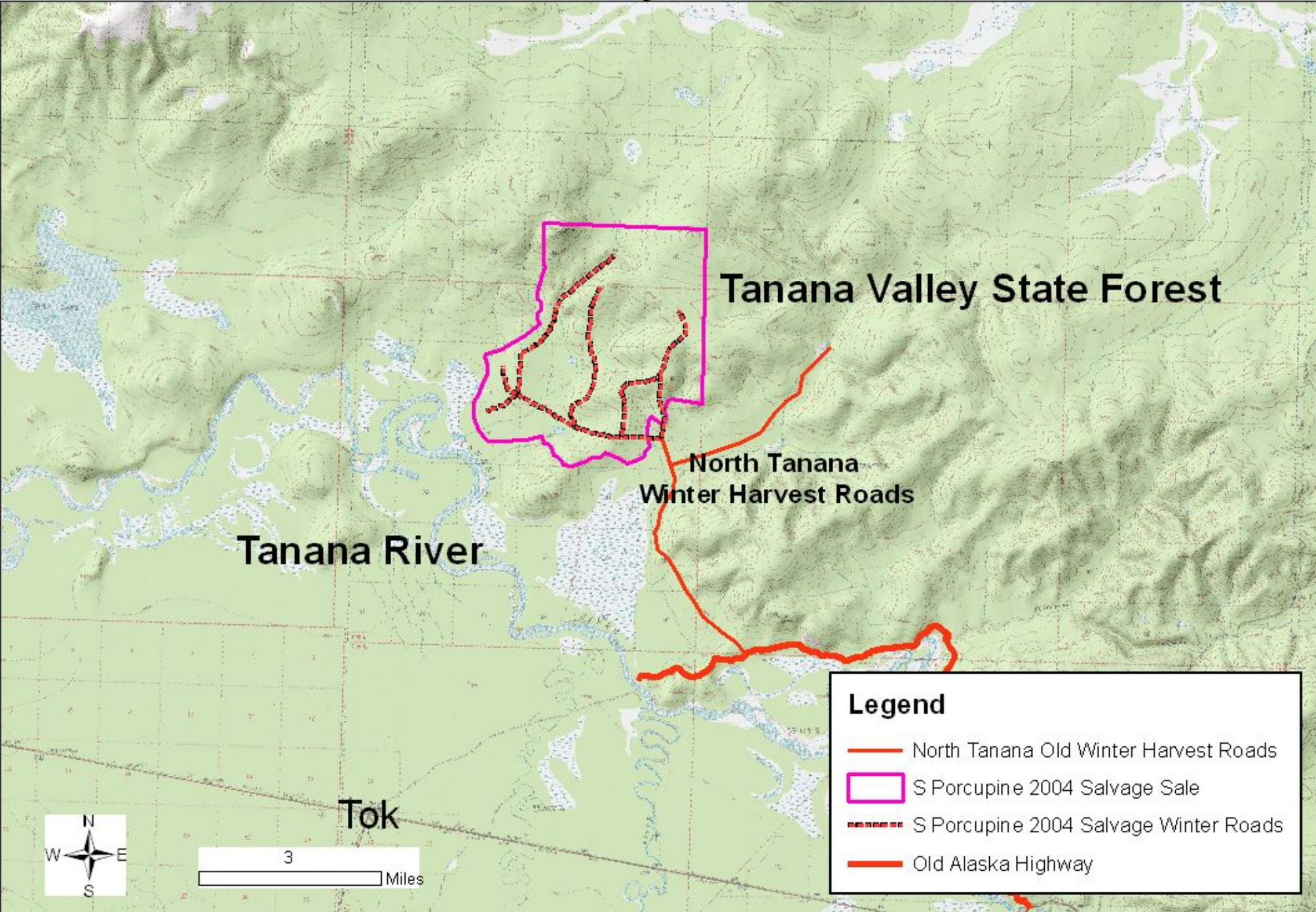


# Eagle Trail Fire Salvage Sale Tanana Valley State Forest



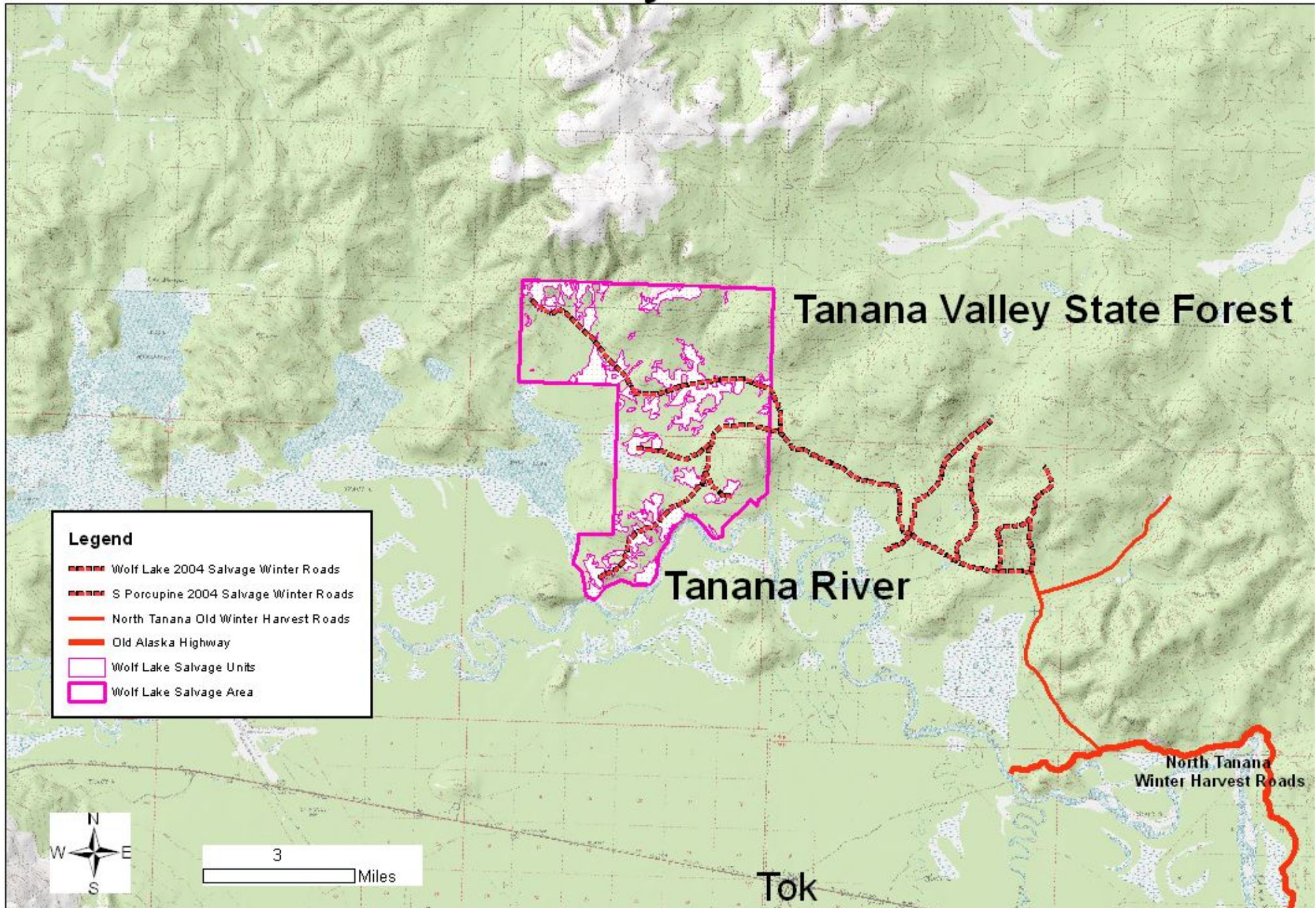


# 2004 South Porcupine Salvage Sale Personal Use Tanana Valley State Forest



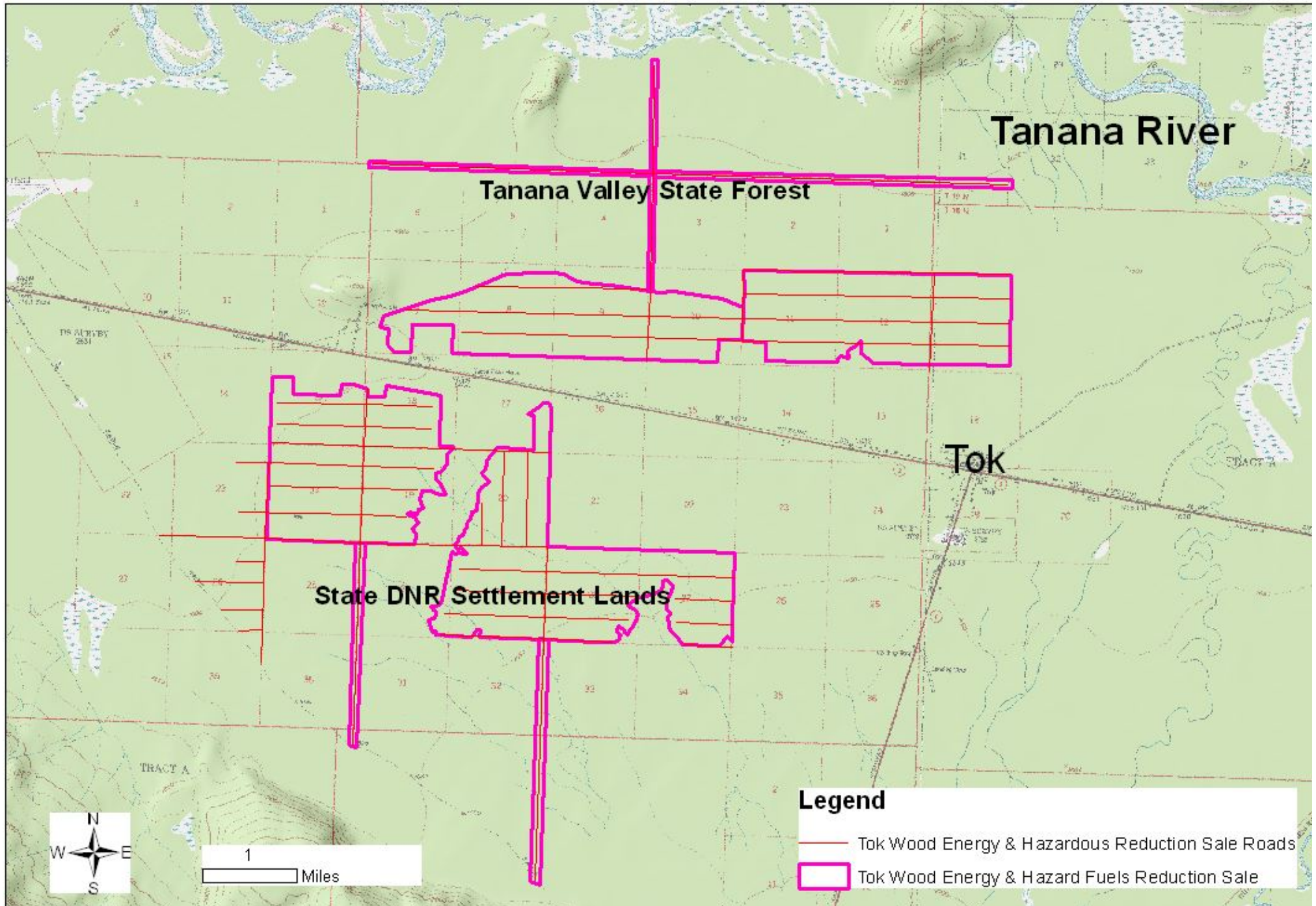


# 2004 Wolf Lake Salvage Sale & Personal Use Tanana Valley State Forest

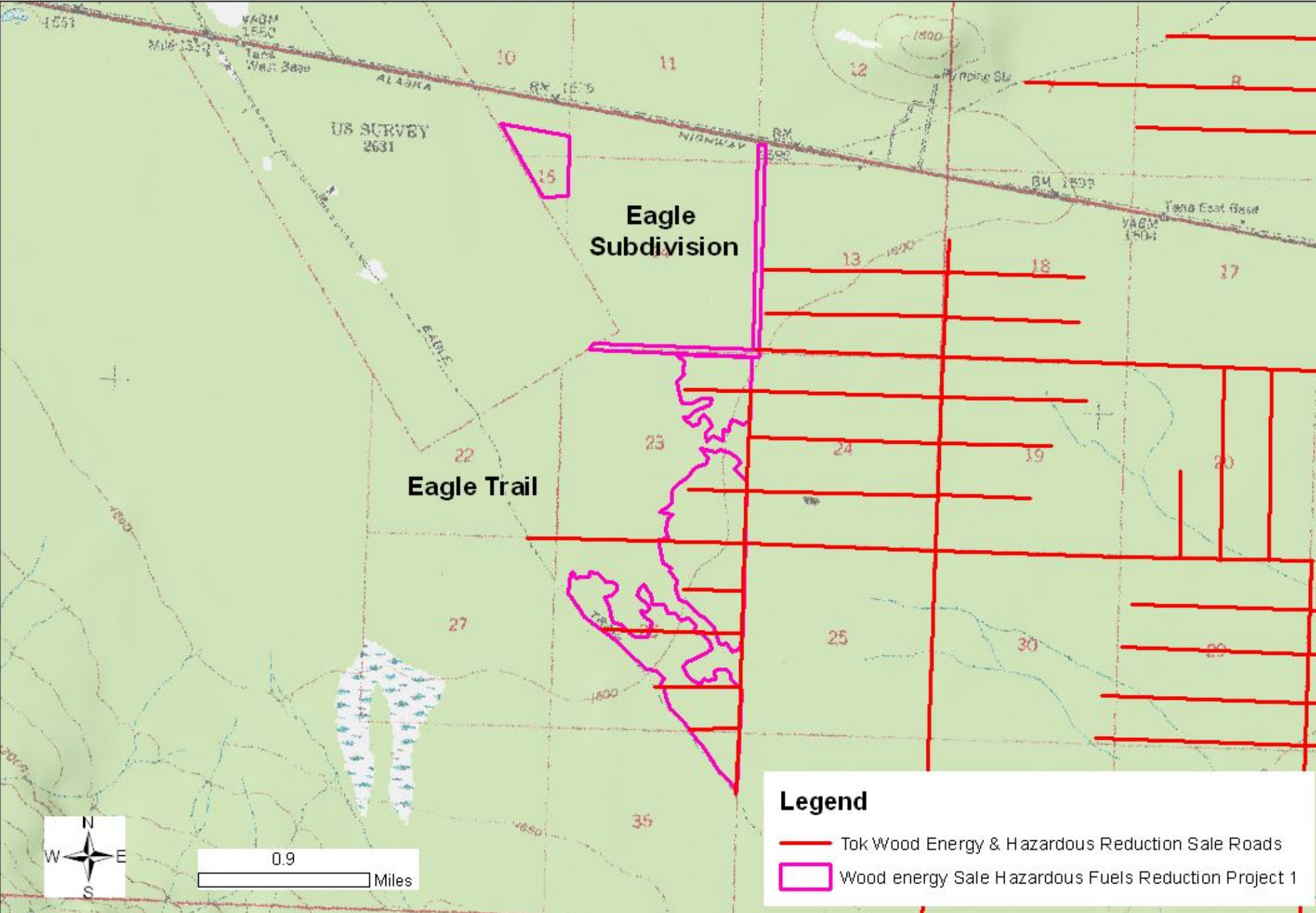




# Tok Wood Energy & Hazardous Fuels Reduction Sale

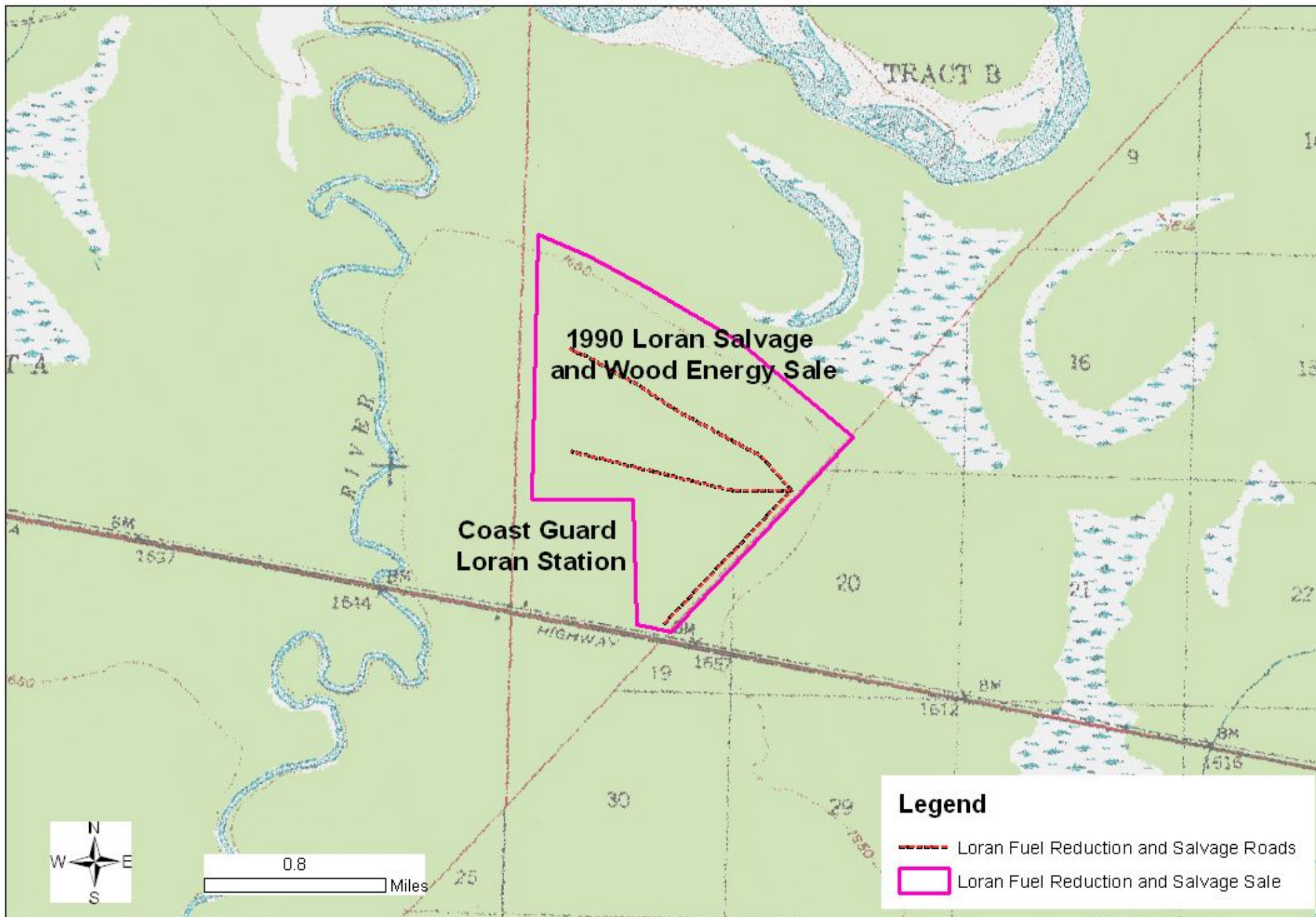


# Wood Energy Sale and Hazardous Fuels Reduction #1





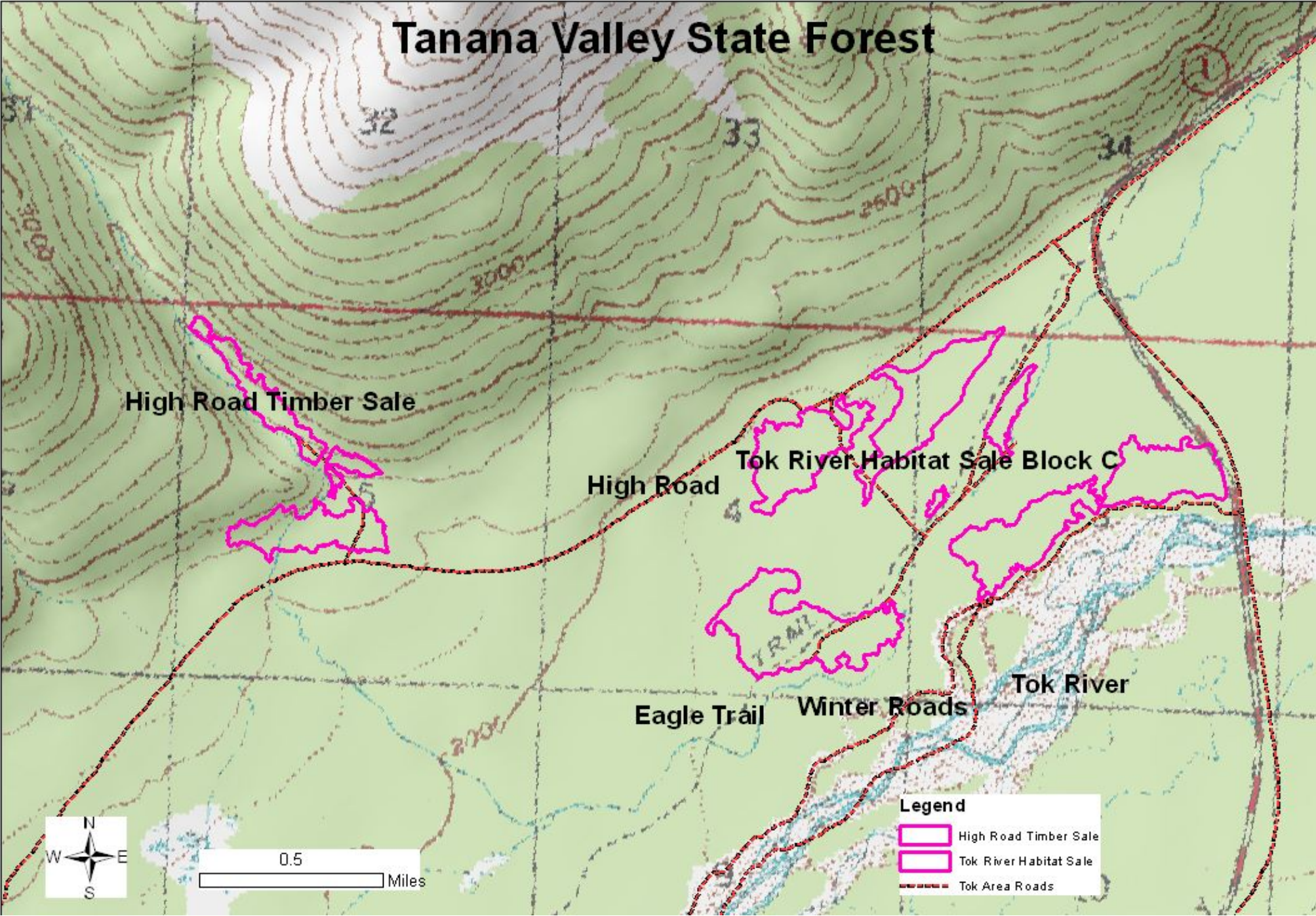
# 1990 Loran Salvage and Wood Energy Sale





# High Road Timber Sale Tok River Habitat Sale Block C

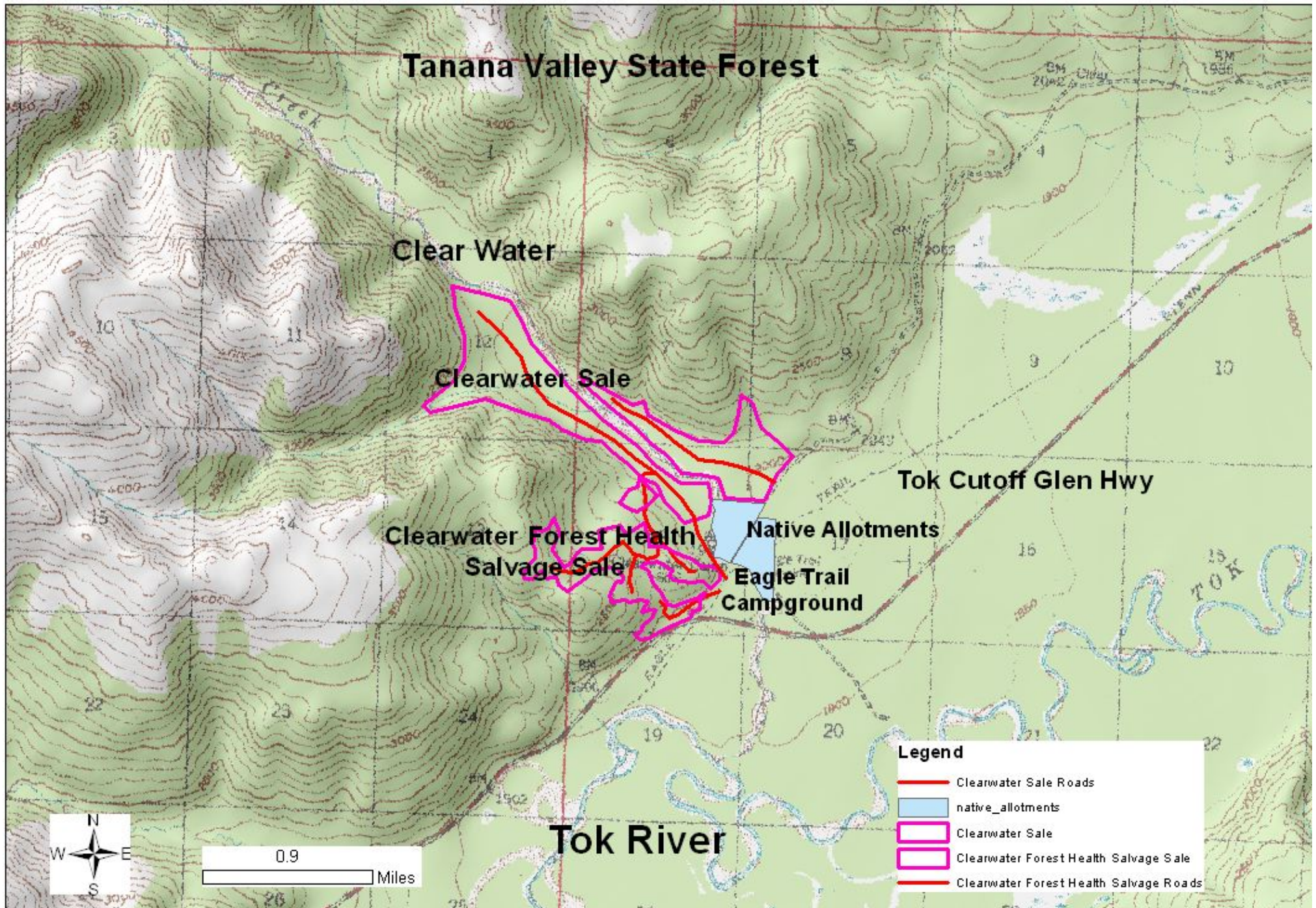
## Tanana Valley State Forest





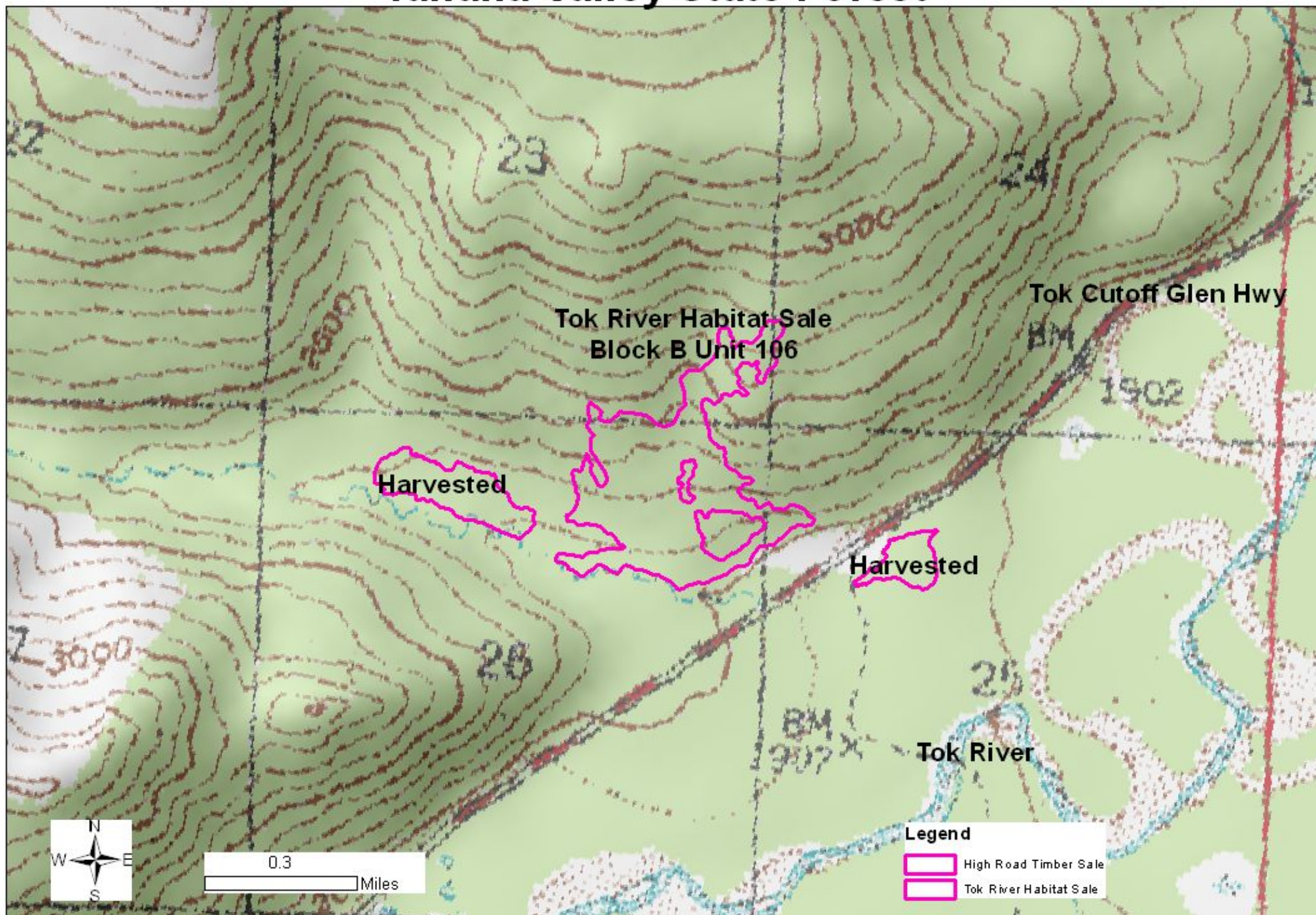
# Clearwater Forest Health Salvage Sale

## Clearwater Sale



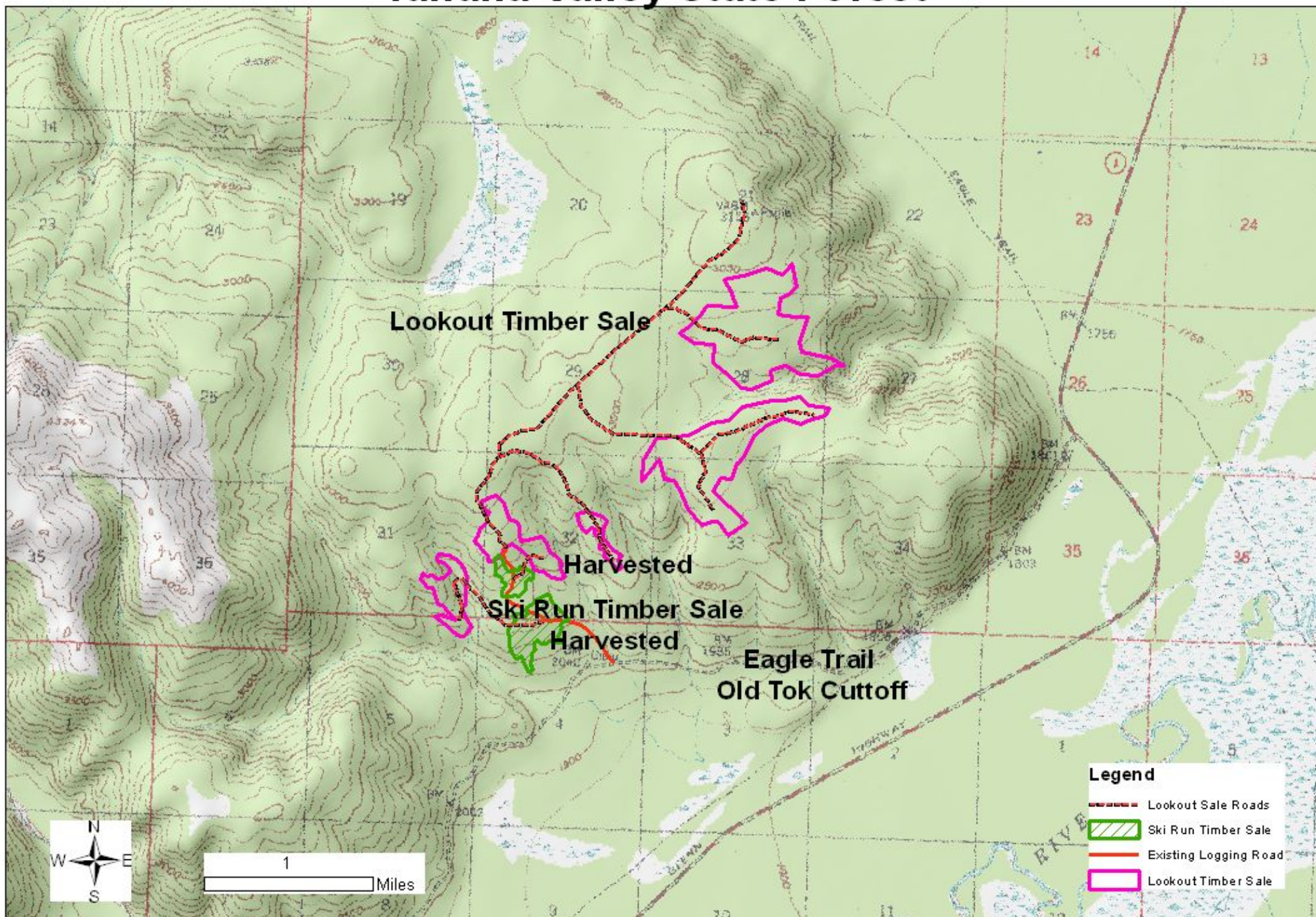


# Tok River Habitat Sale Block B Unit 106 Tanana Valley State Forest



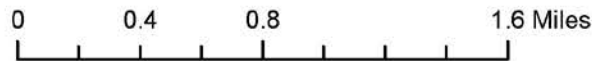
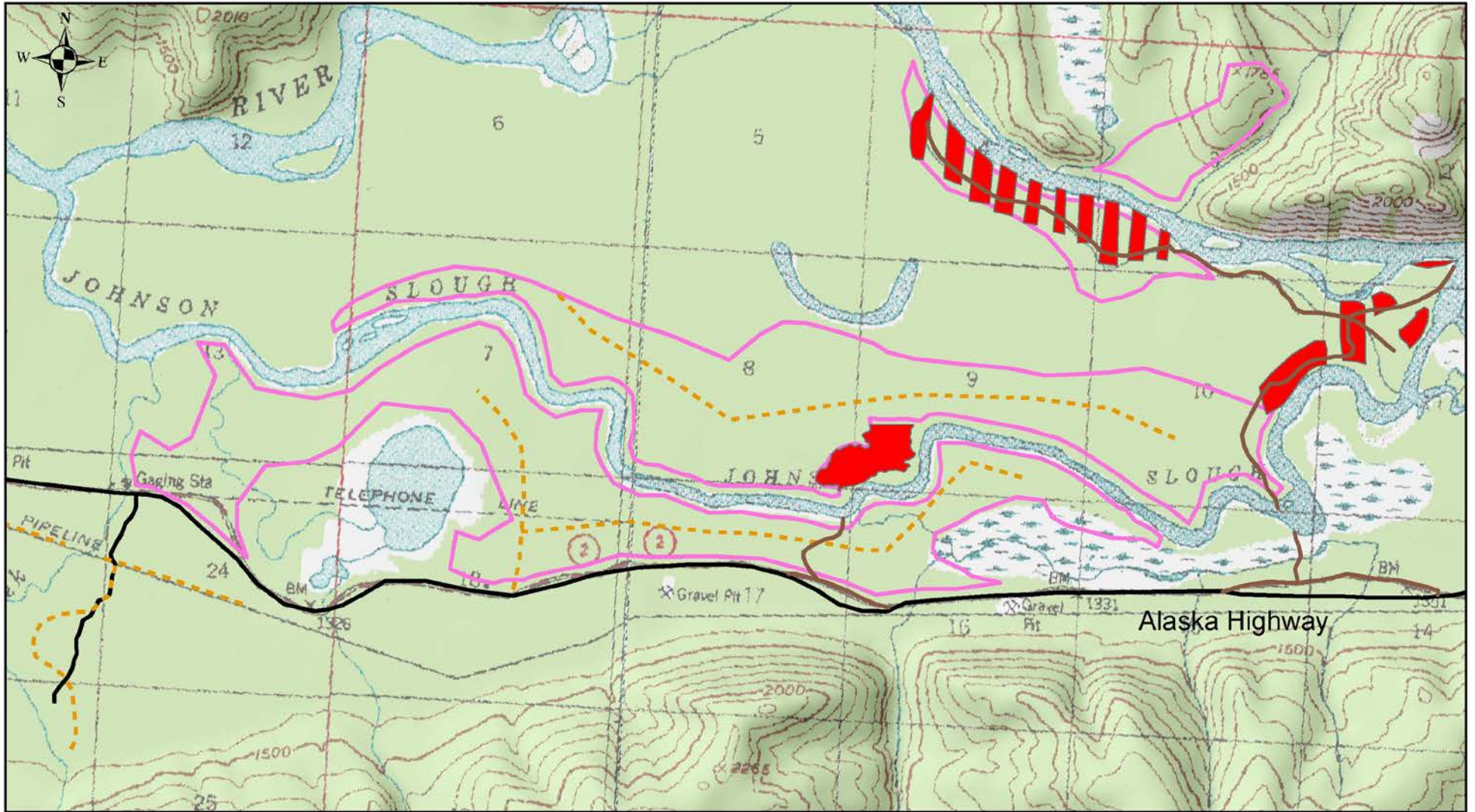


# Lookout Timber Sale Tanana Valley State Forest





# Johnson Slough Best Interest Finding & Forest Land Use Map





# Best Interest Finding & Forest Land Use Plan Dry Creek Salvage Sale Area Map

