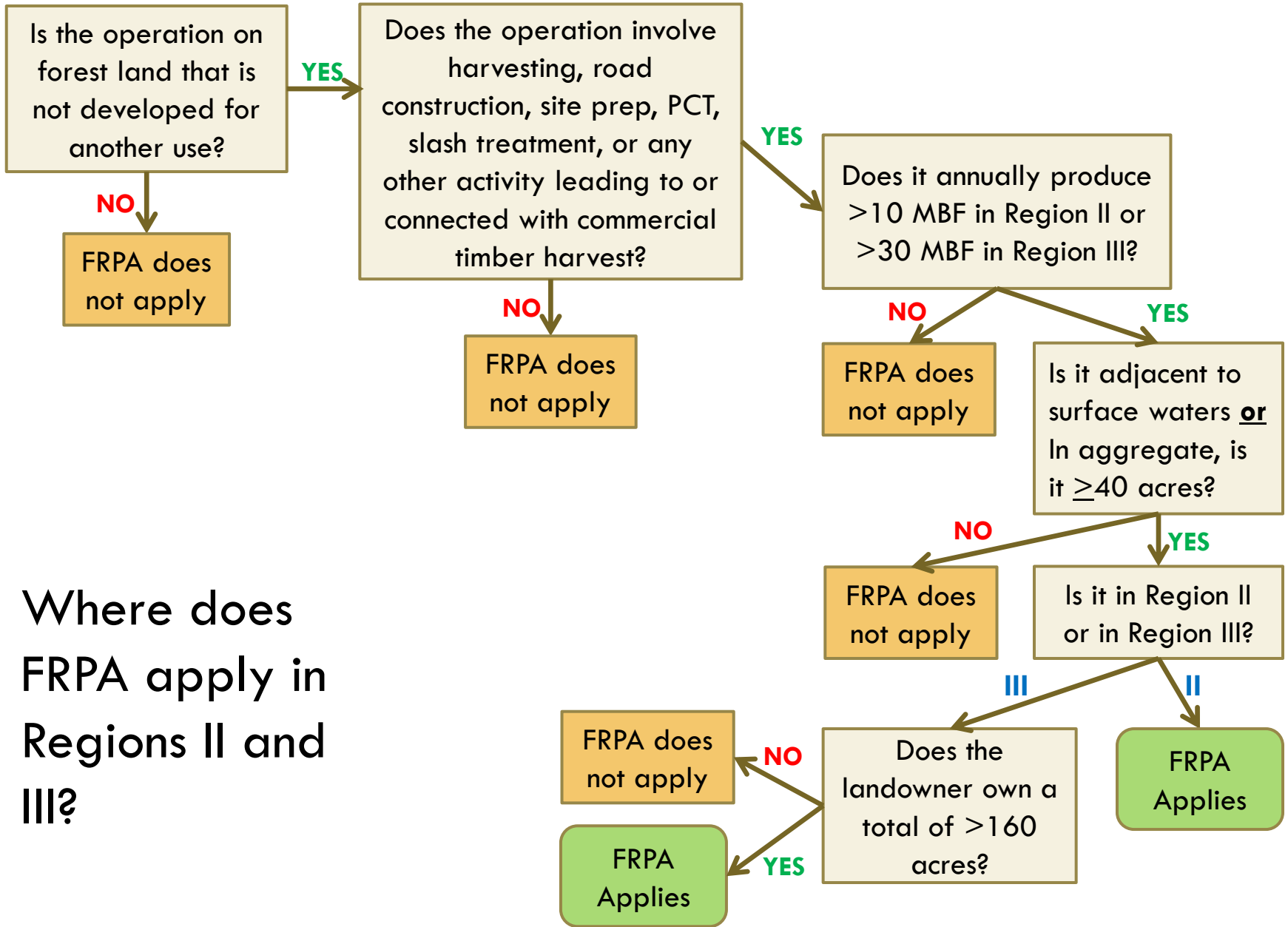


Applicability of FRPA in Regions II and III (11 AAC 190)

- 1) Is the operation on forest land not developed for another use? AND
- 2) Does it involve harvesting, road construction, site prep, PCT, slash treatment, or any other activity leading to or associated with commercial timber harvest? AND
- 3) Does it produce >10 MBF/yr in Region II or 30 MBF/yr in Region III? AND
- 4) Is it
 - 1) Adjacent to surface waters (freshwater springs, lakes, ponds, streams), OR
 - 2) ≥ 40 ac in aggregate (In Region III the landowner must own >160 ac)

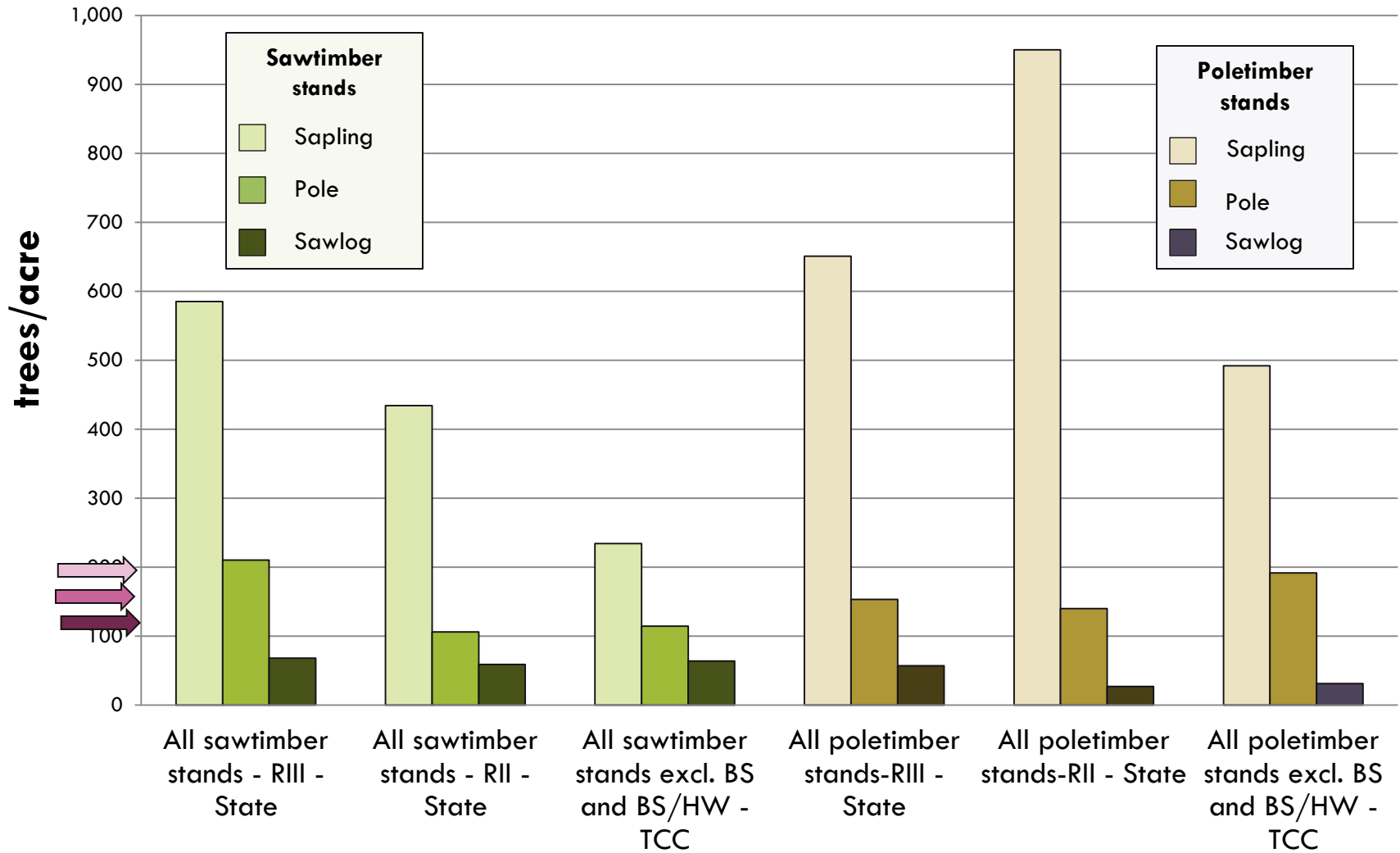


Where does FRPA apply in Regions II and III?

Source data on stocking levels

- DOF inventories on state land
 - ▣ Region II
 - Mat-Su Area
 - Kenai Area
 - Copper River Area
 - ▣ Region III
 - Fairbanks Area
 - Kantishna Area
 - Delta Area
 - Tok Area
- Tanana Chiefs surveys on Native land (NA, Village, Regional Corp.)
 - ▣ Region II
 - Gakona
 - Tazlina
 - Mentasta (II/III)
 - ▣ Region III
 - Upper Yukon
 - Middle Yukon
 - Koyukuk
 - Kuskokwim
 - Tanana
 - Bering Straits

Average trees/acre in sawtimber and poletimber stands on State and Native lands

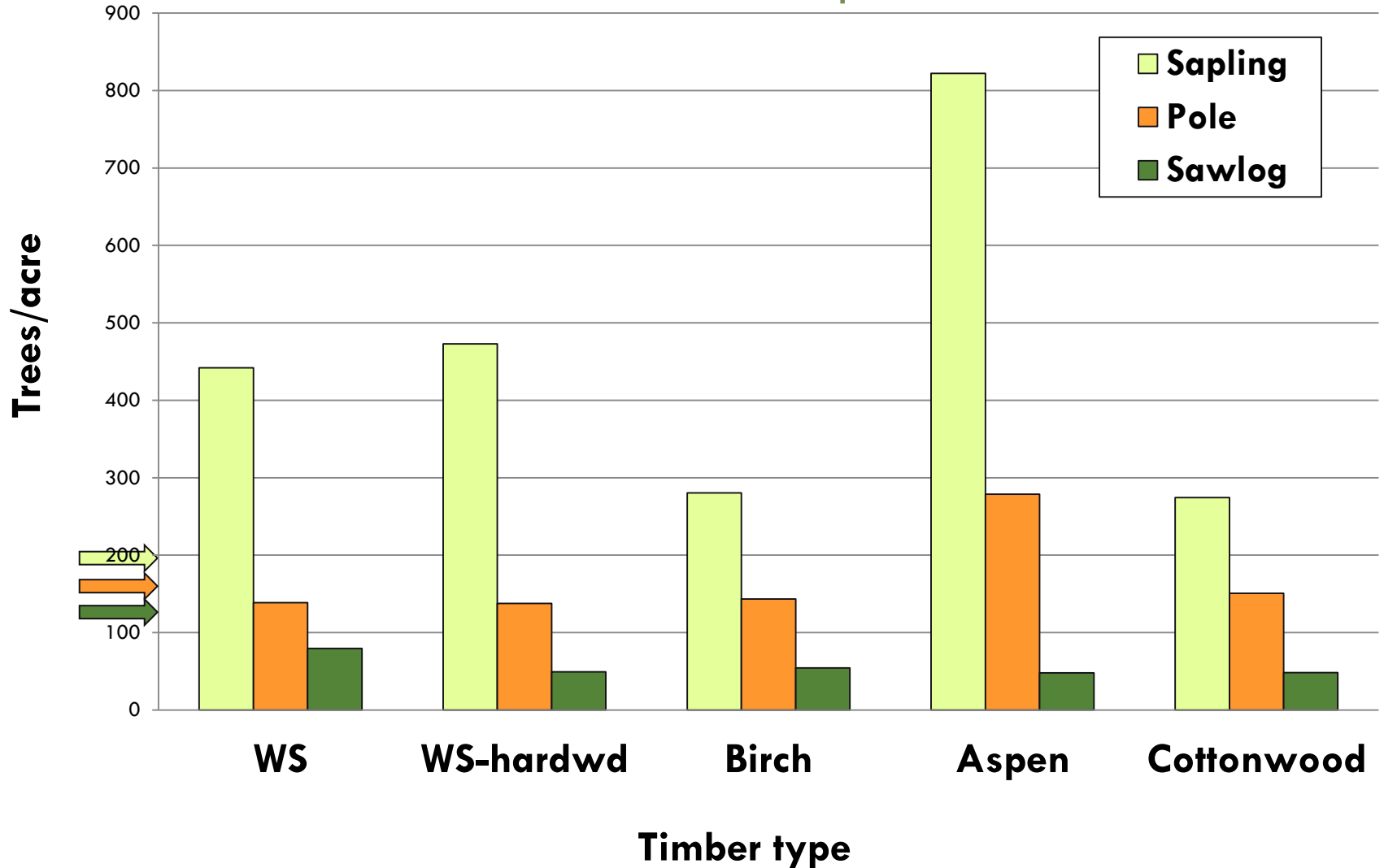


→ Stocking standard

Data from state inventories (Doug Hanson) and TCC surveys (Will Putman)

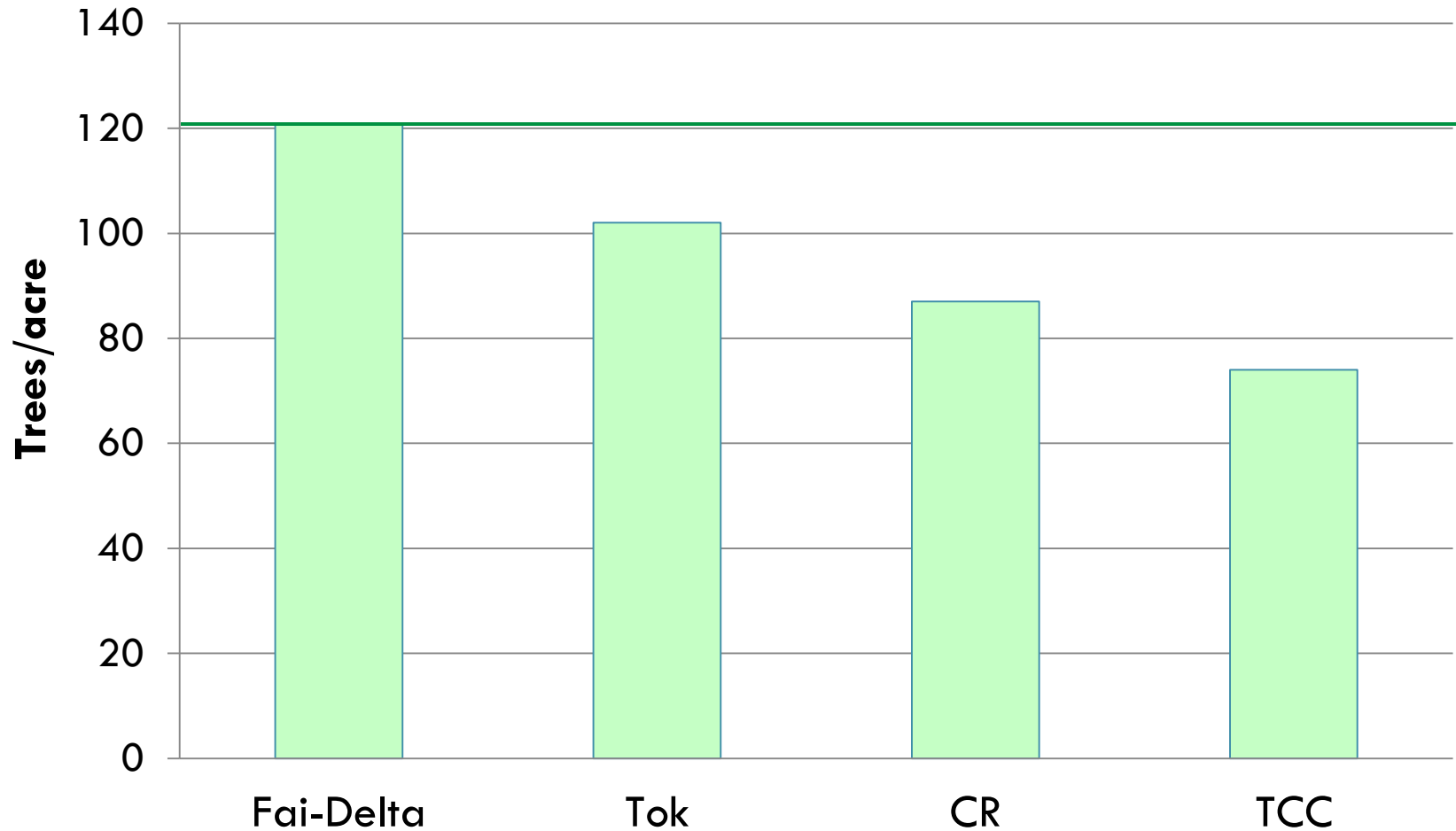
Average trees/acre in poletimber and sawtimber cover types on State and Native land in Regions II-III

Stems include all species



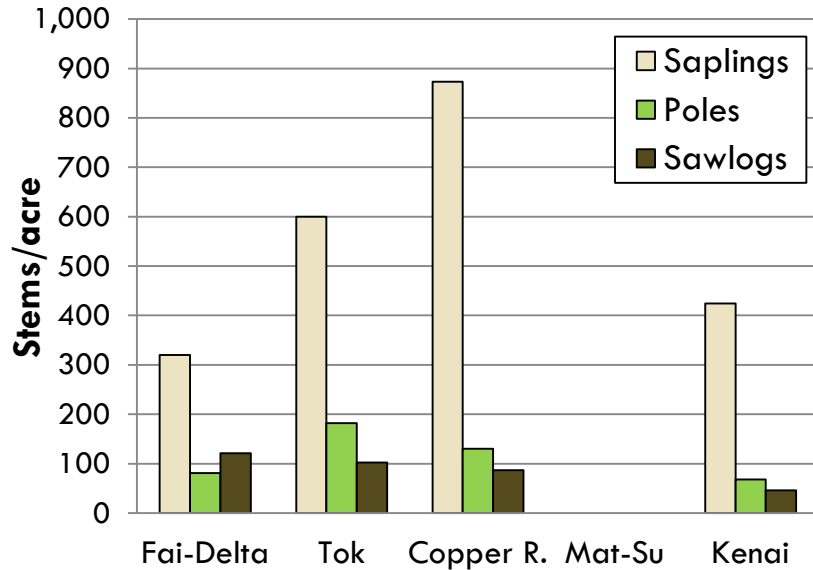
Data from state inventories (Doug Hanson) and TCC surveys (Will Putman)

Sawlog trees/ac in WS sawtimber stands on State and Native land

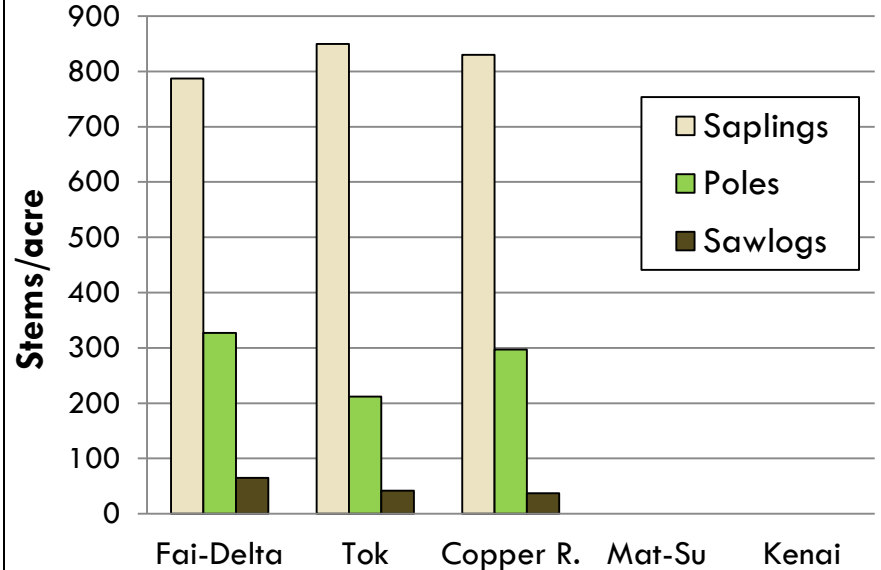


Data from state inventories (Doug Hanson) and TCC surveys (Will Putman)

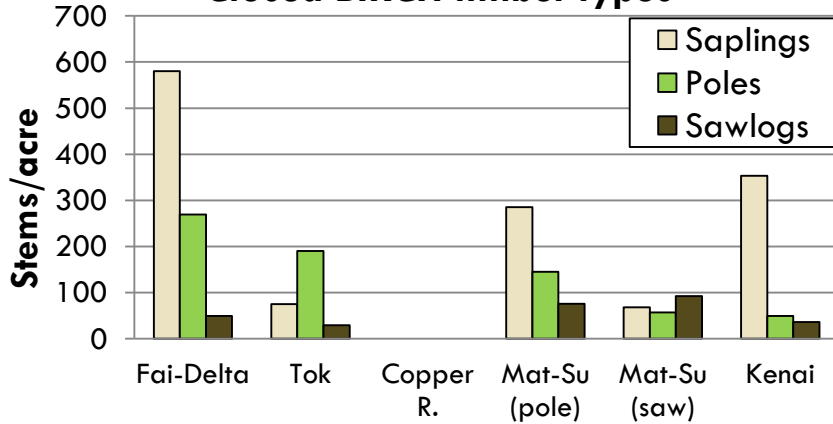
White SPRUCE/Sitka spruce saw timber types



Closed ASPEN timber types



Closed BIRCH timber types



**Stems per acre by
timber type and area
on state land**

Comparison to FRPA stocking standard – State land

Cells in green meet stocking standards

Area	Timber Type	Saplings	Pole	Saw	Tot. trees
Fai-Delta	WS Saw	320	81	121	522
	BI Closed	580	269	49	898
	AS Closed	787	327	65	1,179
	WS-BI Pole	301	163	61	525
	WS-HW Repro	2,515	112	11	2,638
Tok	WS Saw	600	182	102	884
	BI Closed	75	190	29	294
	AS Closed	850	212	42	1,104
	WS-BI Pole	1,000	142	53	1,195
	WS-HW Repro	1,925	164	11	2,100
Copper River	WS Saw	873	130	87	1,090
	AS Closed	830	297	37	1,164
	WS-AS Pole	950	140	27	1,117
	WS-BS Repro	767	157	9	933
Mat-Su	BI Pole Closed	285	145	76	506
	Bi Saw Closed	68	57	92	217
	WS-BI Saw Closed	153	49	81	283
	WS-HW Repro	408	143	23	574
Kenai	WS-SS	424	68	46	538
	BIRCH	353	49	36	438
	WS-BI	338	95	34	467

Comparison to FRPA stocking standard – Native land

Cells in **green** meet stocking standards

Stratum Description	saplings stems per acre (1"-5" DBH)	poletimber stems per acre (5"-9" DBH)	sawtimber stems per acre (> 9" DBH)	Total stems/acre
Black spruce Poletimber	1,111	176	4	1,291
Black spruce-Hdwd Poletimber	709	172	5	886
Cottonwood Poletimber	382	191	39	612
Cottonwood Sawtimber	167	110	58	335
Hardwood Poletimber	602	232	24	858
Hardwood Sawtimber	0	62	73	*135
White spruce Poletimber	286	238	47	571
White spruce Sawtimber	148	133	74	355
Wh. spruce–Bl. spruce Poletimber	1,024	108	4	1136
White spruce-Cottonwd Poletimber	354	182	38	374
White spruce-Cottonwd Sawtimber	635	104	50	789
White spruce-Hdwd Poletimber	305	199	35	539
White spruce-Hdwd Sawtimber	221	163	64	448

*97%