

Tok Area Forestry



2006 Orientation Guide

Department of Natural Resources
Division of Forestry
Tok Area Office

WELCOME TO TOK AREA FORESTRY. The Tok Area Forestry (TAF) administration boundary encompasses lands from the Johnson River in the west, to the Canadian Border in the East; and from the village of Mentasta in the Alaska Range south of Tok, to the community of Chicken in the north. TAF is responsible for the wildfire suppression on all lands (regardless of ownership) in the 8.5 million-acre Tok Area. In addition, Tok Forestry is actively engaged in wildfire prevention throughout the more than 13,000 square mile area.

The Tok Forestry protection area encompasses eight communities ranging in population from 20 to 1400 people.

This area has a rich and diverse history. It was primarily populated by Athabascan Indians. The area then experienced a gold rush in the late 1800's in the Fortymile River region where some active mining still takes place. Numerous trading posts and small communities sprang up and died away during this period. The influx of prospectors created a need for law enforcement resulting in a military fort being built at Eagle City north of Tok Area. The building of the Eagle to Valdez Trail allowed for better access to the area. A communication system was developed, the Washington-Alaska Military Cable and Telegraph System (WAMCATS). WAMCATS consisted of a telegraph line from Eagle to Valdez that followed the trail. Cabins were built every 40 miles along the line to house the repairmen with emergency shelters located in between. Cable lines were laid from Seattle to Valdez linking the Fortymile gold country to the rest of the world. There were plans to build a railroad along this route, however funding was never appropriated. World War II was another major influence on this area with the construction of the Alaska Highway, the Fairbanks to Haines U.S. army fuel pipeline, and the construction of several airports.

The Alaska Division of Forestry has been fighting fire in Interior Alaska since 1984 when the Tok Area Office opened. The average number of fires per year since then is 26.

The fire season in Tok Area has three distinct stages: The spring fire season in late May and early June before green up, the lightning season from mid-June through mid-July, and the fall hunter fire season from mid-August until late September.

Approximately 90% of the fires over 1000 acres in size are lightning caused. The Fortymile River watershed and surrounding uplands is primarily a roadless wilderness of black spruce and tundra and is quite susceptible to dry lightning storms with resulting fire starts. The moss/lichen ground cover with overstory stands of white and black Spruce are part of a natural wildfire cycle and burn regularly at intervals of 50 - 250 years.

Fire protection for the 8.5 million acres encompassed by Tok Area Forestry is based upon The Alaska Interagency Fire Management Plan. Lands are pre-designated as Critical, Full, Modified, or Limited suppression options.

Whether in critical/urban interface or out in the wilderness a wildfire in the Interior Alaskan boreal forest can pose serious control problems during dry years. If this is your first wildfire assignment to Tok, please discuss your questions and concerns on fire behavior and tactics with the Tok Area Forest Technicians.

Large Fire Occurrence in the Tok Area

The Tok Area receives an average of 8.76 inches of rain each year from May through September. The eastern Tanana River valley lies within a very active lightning belt with the Forty Mile uplands receiving more lightning strikes than anywhere in Alaska. Sometimes this is in the form of dry lightning. This sets the stage for remote, lightning caused fires. When these fires occur in limited suppression areas they are monitored by TAF staff through detection/monitoring flights. With multiple fires burning in limited areas acreage burned can total over 100,000 acres in an active fire season. The Tok Area experiences major fires approximately 3 years out of 10.

Fire is a natural part of our ecosystem and can be used as a tool for maintaining a healthy wilderness habitat. Tok Area Forestry has collaborated with the Department of Fish and Game and other agencies to plan and implement Prescribed Burns for resource management. In recent years Tok Area has successfully accomplished prescribed burns totaling 92,000 acres. In 1998 the East Fork Burn was ignited south of Chicken for a total of 55,000 acres, the largest known successful prescribed burn. In 1999 Mosquito Flats and Ketchumstuk burns were accomplished for a total of 37,000 acres.

While on assignment at Tok Area Forestry

Tok Area Forestry Facilities

The *Administration Building* is the public reception and business office, the Area Forester's office, logistics coordination office, and dispatch office. During normal operations the dispatch office is the communication center of the Tok Area.

The *Tok Area fire warehouse* is where hand and power tools are available as well as other supplies. Any requests for supplies or equipment from the warehouse are routed through the Tok Warehouse Manager, Joe Faulise. You will be held strictly accountable for anything checked out. Tok's warehouse has a 200 person NUS (200 person fire cache) and is used for fire only. During expanded operations this area can become an overflow work area for support dispatch.

The *Operations Building* is the summer office for the Suppression Foreman and seven Forest Technicians. This building is the daily assembly area for Tok Initial Attack crewmembers from May through September. Roll call, daily work assignments and briefings, and training occur here.

The Initial Attack helicopter pilot and mechanic are on duty at the *helibase*.

The *bunkhouse* is occasionally used for overnight housing during periods of fire activity. This building will be locked except when needed for housing purposes. Staff who are temporarily living in the facility will be responsible for keeping it clean. This is a "walk-to" facility - no vehicles allowed.

When local commercial lodging vendors have no vacancies, it may be necessary to use the Tok Forestry station grounds or other designated areas for camping.

The *materials storage "bone yard" area* is the home of the potable water trailer, river boat house, snowmachine storage, lumber storage, cordwood, scrap metal, pipe, various trailers, and the fuels storage area (jet A, drip torch). If you need items stored here discuss it with your supervisor and / or the warehouse staff.

The *crew mobilization building* is used primarily for crew or equipment hires and mobilizations. This building may also be used for overhead standby and briefings, as an Incident Command Post (ICP), or issuing of meal coupons and lodging.

The *gravel pit parking area* is where personal vehicles are parked during extended fire staffing situations. No alcohol or controlled substances are permitted on the grounds.

Personal telephone calls will be made during scheduled breaks from the Operations Building phone. **Long distance calls** will be charged to a credit card or with charges reversed. Agency phone calls to Fairbanks, Copper River and Delta are only made on line #6, which is a direct line to Fairbanks. Keep the call brief, as all Forestry staff share the line.

Tok Area Forestry Station Operations and Staff

Hours:

Dispatch 0800-1800 Monday-Sunday
Suppression 1000-1800 Monday-Sunday
Office 0800-1630 Monday-Friday

Mailing Address:

Tok Forestry
PO Box 10
Tok, Alaska 99780

Email:

tas1@dnr.state.ak.us

Phones: Main Office 883-5134 fax: 883-5135
Dispatch 883-5681
Fire Line 883-3473 (FIRE)

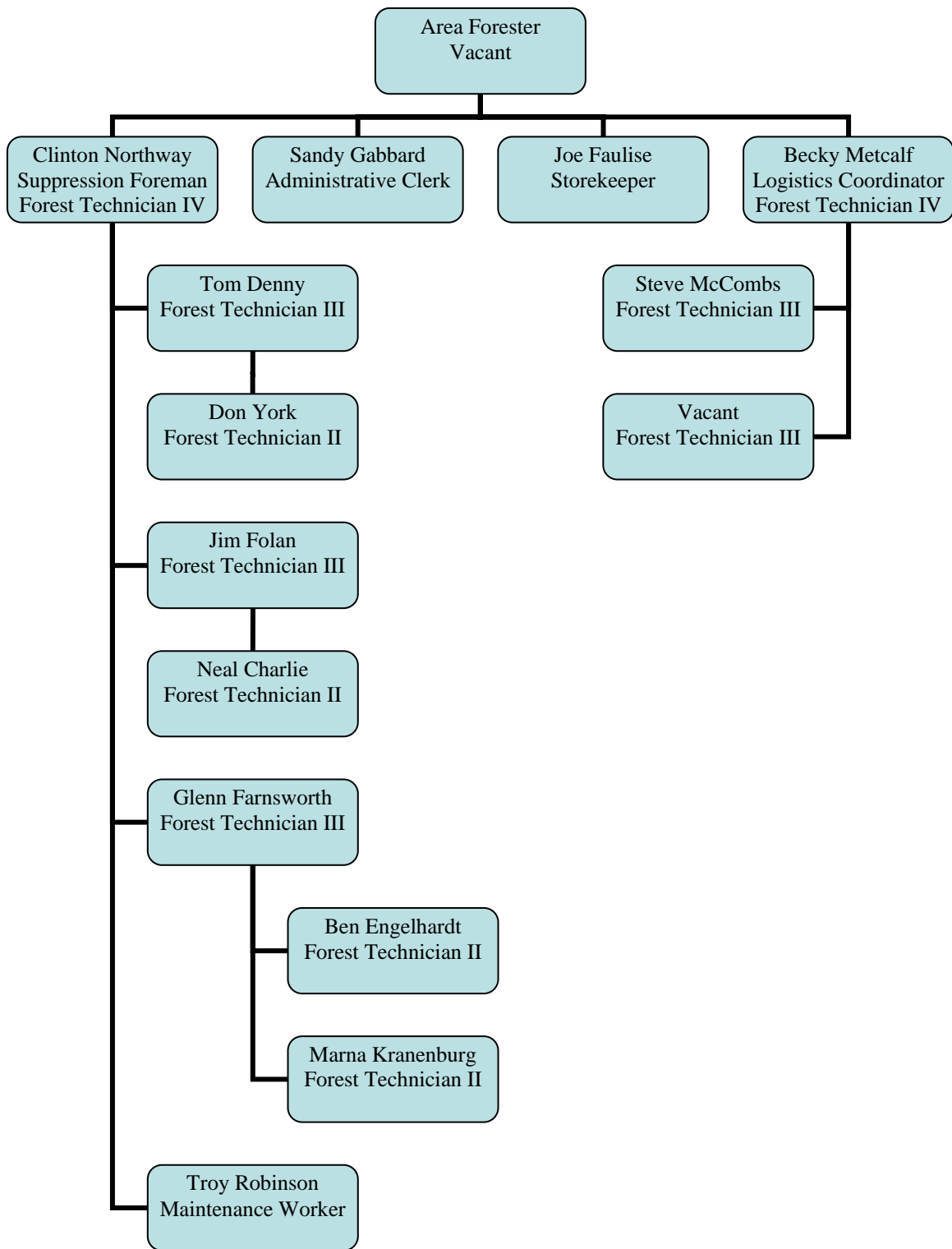
Duty Officer: After hours the fire line is forwarded to the duty officer's cell phone. The duty officer schedule is posted in the office. The current duty officer is listed on the night report and on the Teletype signoff.

The Tok Area organization chart for routine staffing is attached. During an incident situation, the fire suppression staff and fire support staff at TAF expand rapidly into an ICS structure. An organization chart will be posted in the operations building and the administration building during periods of expanded operations.

During expanded fire operations the goals of the Tok Area Office are:

1. To continue the normal operations of initial attack (IA), forest management, and other Division of Forestry land management activities while effectively managing wildfires as delegated by state statutes, cooperative agreements, and fire plans.
2. To cost effectively manage these activities in a professional manner.

We ask cooperating suppression agency and emergency firefighter (EFF) personnel to assist us with these goals! One way you can help is by maintaining the main administration building so that we can continue to provide routine services to the general public. Most project fire and extended attack activities will be handled either at the Crew Mobilization building or from the Operations building. If personnel have agency business to perform in the administration building please minimize the impact and ask the administrative assistant which phones, computers, etc. are available.



Meals and Lodging

The State of Alaska uses either a coupon system or per diem to feed personnel during fire assignments.

The coupon system allows you to go to selected food establishments which will then directly charge your meals to the State of Alaska. A list of participating vendors is available. These coupons must be used in the issuing area and on the date written on the coupon. Remember these are for food items and non-alcoholic beverages only. Please read the back of your coupon for additional information. You are required to pay for tips, alcoholic beverages, and any amounts over the following designated charge allowances:

\$8.00 Breakfast

\$9.00 Lunch

\$19.00 Dinner

Transportation will be provided for you with either a state owned vehicle or a rental. These vehicles are for State business only. You will be responsible for parking tickets or any other violations charged to the vehicle while you are in possession of it. If you are not assigned your own vehicle transportation will be provided.

While assigned to the Tok Area office you may be staying at one of the local hotels. During the summer tourist season, these hotels fill up with pre-booked tourists, which may make it difficult to provide you with the same room throughout your stay. During your stay, you may be required to move several times to different hotels. If you are assigned to initial attack or helitack you will be required to take all your gear out of your room each morning and turn your hotel key into dispatch incase you are sent to a fire during your shift. You will collect your key from dispatch at end of shift. The cost of your room will be directly billed to Tok Forestry; however you must pay for all charges other than your room charge. The State of Alaska will not pay for long distance phone calls from you hotel room. Please remember to check out prior to leaving Tok Area and pay any additional charges you have accrued. If no hotels are available you may be staying in the bunkhouse or a tent at the forestry office.

A map showing locations of the vendors is attached. To be fair, we make every effort to rotate motel vendors consistent with the goals of cost-effective management while providing a quiet restful night away from the fire-line for employees.

Tok Area King Radio Frequencies 2006

	210 CHANNEL KINGS	TOK AREA	GROUP 14		
CH#	DESCRIPTION	DISPLAY	TX / RX	CG	
1	DOF A Fairplay	DOFA	159.270 / 151.265	141.3	
2	Forestry Simplex	SIMA	151.265		
3	DOF B Dot Lake	DOFB	159.300 / 151.295	141.3	
4	Mentasta Repeater	MNTA	154.755 / 159.255	141.3	
5	DOF Repeater C Northway	DOFC	159.330 / 151.325	141.3	
6	Forestry Simplex C	SIMC	151.325		
7	DOF D Nueberger	DOFD	159.345 / 151.280	141.3	
8	Forestry Simplex D	SIMD	151.280		
9	Tok VFD	TKFD	154.130		
10	Command and Control	CnC	155.295		
11	Tactical Air to Ground	TCAG	166.6375		N
12	Interagency TAC 1	IAT1	159.375		
13	Interagency TAC 2	IAT2	172.225		N
14	Air Guard	14 GUARD	168.625		N

Tok Area Mobile Radio Frequencies 2006

CH#	DESCRIPTION	DISPLAY	Zone 2	CG	
			TX /RX		
65	DOF A, Mt Fairplay Repeater	65 DOF A	159.270 / 151.265	141.3	
66	Forestry Simplex A	66 SIM A	151.265/151.265		
67	DOF B, Dot Lake Repeater	67 DOF B	159.300/151.295	141.3	
68	Tok Local, Simplex B	68 SIM B	151.295/151.295		
69	DOF C, Northway Repeater	69 DOF C	159.330/151.325	141.3	
70	Forestry Simplex C	70 SIM C	151.325/151.325		
71	DOF D Nueberger (I.A.)	71 DOF D	159.345/151.280	141.3	
72	Forestry Simplex D	72 SIM D	151.280/151.28		
73	Mentasta	73 MENTA	154.755/159.255	141.3	
74	Mutual Aid 1	74 MUT 1	154.295/154.295		
75	Command and Control	75 CnC	155.295/155.295		
76	Tactical Air to Ground	76 TACAG	166.6375/166.6375		N
77	Interagency TAC 1	77 IATC1	159.375/159.375		
78	Interagency TAC 2	78 IATC2	172.2250/172.2250		N
79	USFS Air Guard	79 GUARD	168.6250/168.6250		N
80	TNWR Jatahmund Repeater	80 TNWR	169.7250/172.4500	107.2	N
81	Tok VFD / Anc FD	81 TKVFD	154.130/154.130		
82	EMS Tok	82 EMS	155.160/155.160		
83	AST Simplex	83 AST1	155.250/155.250		
84	Parks Simplex	84 PARKS	151.220/151.220		
85	Fairplay Phone Patch	85 PHONE	151.010/156.105	114.8	
86	Glennallen VFD	86 GAVFD	155.745/155.745		
87	BLM Chicken	87 BLMCK	171.7000/169.4000	77.0	N
88	US Customs	88 CUSTM	165.2375/166.4375	100.0	N
89	RCMP Beaver Creek	89 RCMP	158.5350/153.2750	107.2	
90	TNWR Bitters Mtn.	90 TNWRB	172.4500/169.7250	107.2	N
91	Northway VFD	91 ORTFD	154.115/154.115		
92	WX NOAA (Fairbanks)	92 FAIWX	/162.55		
93	AFS TAN	93 TAN	164.150/164.150		
94	AFS Turquoise	94 TURQ	164.800/164.800		
95	AFS Silver	95 SILVR	164.525/164.525		
96	AFS Brown	96 BRN	163.050/163.050		
97	AFS Red	97 RED	163.175/163.175		
98	AFS Gold	98 GOLD	163.025/163.025		
99	AFS White	99 WHITE	163.8375/163.8375		
100	AFS Grey	100 GREY	171.7750/171.7750		

Burn Permits

Tok's burn permit program is jointly administered with close coordination by the suppression foreman and the logistics/dispatch coordinator. People requesting permits will either call or stop by the office. The suppression technicians do site inspections and issue a burn permit. Permits may be issued for piles less than 10'x10' if the following conditions are met.

1. Pile is on mineral soil.
2. There is sufficient fire break 1 ½ times the size of the fire (15' for a 10'x10' pile) to contain the fire.
3. The burn will be attended.
4. Tools and water are available.
5. In the opinion of the state representative it is a safe burn.

Burn permits are issued for 1-14 days depending on the weather. In hot dry weather be very conservative, a one-day permit might be appropriate. Season long or open burn permits will be issued only upon the approval of the area forester. The Tok Landfill receives a season long, open permit for example.

The I.A. dispatcher must know the location of all permitted burns. The burn permit logbook is kept at the dispatch counter and is updated daily. The location of the permitted burns may be mapped during very high or extreme fire danger to facilitate "at a glance" discrimination between permitted burns and new fires.

Phone permits may be issued at the discretion of the Area Forester or the duty officer for remote locations.

EFF Program

Tok Area Forestry trains and utilizes Emergency Fire Fighters (EFF) each year to supplement their fire fighting work force. EFF are used in initial attack, warehouse, dispatch and financial areas. TAF also has 6 Type II designated crews on the statewide rotation: one each from Mentasta, Tanacross, Tetlin, Tok, and two from Northway. These well-trained crews are used throughout the state and in the lower 48 states on assignments during fire season and are available to travel on very short notice.

While at Tok Area Forestry you will be expected to maintain fire readiness. When not on fire calls there is always plenty of training and work for everyone. If you haven't been assigned something to do or you have finished your project talk to your supervisor.

There are a variety of ongoing projects at any given time. Some of the projects you may be working on while on Initial Attack in the Tok Area are:

- Training or assisting in training others.
- Doing burn permit inspections and issuing burn permits.
- Doing Defensible Space inspections.
- Gathering data for the ongoing updating of the Defensible Space database.
- Fire Prevention Programs.
- Station maintenance.
- Station improvement projects.
- Timber projects.

Air Operations Section



*****Helicopter Managers, Pilots, and Helibase Managers are advised to see the Logistics Coordinator and Suppression Foreman for more detailed information.* ****

Our Initial Attack:

A contract A-Star helicopter is stationed at Tok from mid-May to mid-August. Its primary mission is initial attack, but this helicopter often supports logistical radio repeater work, crew shuttles, detection and prescribed burns. It is also shared with other neighboring areas as approved by the area forester and logistics coordinator.

Air to Air Communications at an Incident:

All aircraft involved with fire operations will announce their position on 128.45 to other responding aircraft when 10 minutes out from the fire. This is the Air to Air Frequency for *all* fires in Alaska unless otherwise specified. All lead planes, helicopters, jumpships, detection and transport aircraft will coordinate on this channel. Ground forces and dispatch do not monitor this frequency.

Aviation Fuel:

During low fire occurrence periods jet fuel can be purchased commercially at 40-Mile Air at the Tok Junction Airport or at the Northway Airport. After-hours fueling requires advance arrangements through dispatch. 100 low lead aviation gas is available from the D.O.F. Tanacross Retardant Site or 40-Mile Air.

The state representative is responsible to write the correct charge code on the fuel receipts when charging fuel at Tok Junction or Northway airport. The pilot will give the fuel vendor the fire number or charge code if a state representative is not available. Call dispatch if unsure of the correct code.

Remote Airstrips and Helispots:

On flights to remote airstrips or to incidents where radio communications cannot be established when an aircraft is on the ground pilots must make radio contact with Tok Forestry prior to landing. Pilots must give estimated time on the ground and notify dispatch when airborne again.

Flight Following:

Tok Forestry is responsible for the flight following of all Forestry or cooperative agency aircraft flights that originate or operate in Tok. To do this we enforce these flight following procedures:

- All aircraft will radio position reports every 30 minutes on 132.45 or other designated frequency.
- All aircraft contracted by or chartered by the Division of Forestry in Tok will notify Tok Dispatch upon takeoff with:

1. Tail Number
2. Destination/Detection Route
3. Off Time
4. Purpose of Flight
5. Number of people on board (S.O.B)
6. Hours of useable fuel (F.O.B.)
7. Estimated time enroute (E.T.E.)

Example: "Tok Forestry, 734GW off Tok at 1800 to transport 3 to Fairbanks; 4 SOB, 3+0 F.O.B., 1+20 E.T.E."

- A manifest will be left for every flight with a ground person such as the helibase manager who is responsible to deliver it to dispatch, by radio or phone if necessary.
- When an aircraft leaves Tok Area for Fairbanks International (FAI), the A/C will radio position reports to Tok Forestry until the Dot Lake area then continue flight following with Delta Forestry and Fairbanks Forestry on 132.45 for the remainder of the flight.
- When an aircraft leaves Tok Area for Ft. Wainwright BLM, the A/C will radio position reports to Tok Forestry, Delta Forestry, then contact Alaska Fire Service on 127.45 and continue to flight follow with BLM.

Tok Area dispatch will remain open to flight follow until the mission is complete. Occasionally, for routine operations, other arrangements may be made with the duty officer or logistics coordinator; for example, when a flight plan has been filed with the FAA for a routine point to point flight, or the receiving area is flight following and a clear "handoff" is confirmed.

Initial Attack Helicopters:

The I.A. pilot is on duty at the Tok station when not flying unless relieved by the duty officer during low fire danger. The pilot(s) stand by at the helitack building when awaiting assignment. I.A. helicopters will be dispatched on the Tok initial attack frequency, DOF D Neuberger.

The I.A. helicopter pilot or manager must remain in communication with Tok dispatch during the duty day unless relieved of the responsibility by the duty officer. The pilot/manager will monitor a handheld radio to cover fire calls that may occur during meal breaks and is expected to scan I.A. DOF D and other frequencies as assigned.

Fires in the Tok area are commonly in radio blind spots. Since the helicopter may be needed for other missions (multiple fires or search and rescues) it is essential that the I.A. helicopter pilot/manager check in with dispatch every 20 minutes no matter how routine the operation. This is especially true when on the ground at a remote helispot.

If the pilot/manager cannot reach dispatch during the course of the mission s/he should gain sufficient altitude to radio Tok. Generally, an aircraft can reach Dispatch on 132.45 at 6,500' A.G.L. from anywhere within the Tok Area.

HELICOPTER MANAGER'S NOTE:

AS THE STATE OF ALASKA'S REPRESENTATIVE IT IS YOUR JOB TO ADVISE THE PILOT ON HOW AND WHEN TO MAINTAIN COMMUNICATION.

Helitack Information:

The Initial Attack Helibase is located just south of the forestry fire engine pole barn.

- THIS FORESTRY HELIBASE HAS LIMITATIONS DUE TO ITS LOCATION IN THE APPROACH / DEPARTURE PATH OF THE TOK AIRPORT AND ITS PROXIMITY TO THE GLENN HIGHWAY, D.O.T. MICROWAVE TOWER, FORESTRY BUILDINGS, VEHICLES, AND PERSONNEL!!! BE EXTREMELY VIGILANT WHEN USING THIS BASE!!!
- All loads are to be internal except properly secured loads on the external racks.
- No sling loads. Use the Tok Lodge airstrip south of Tok, Tanacross airport, or designated staging areas for slings.
- No unauthorized flights or landings.
- No unauthorized personnel allowed on pad.
- No unauthorized personnel allowed on aircraft.
- OAS fueling and Helispot procedures only.
- Helispot must be kept clean and free of debris which might be moved by rotor wash at all times.
- Keep the compressed air foam CAFS fire extinguisher at the base and smaller handheld extinguishers at the pads. KNOW HOW TO USE THE FIRE EXTINGUISHERS, ASK THE HELIBASE MANAGER!

FLIGHT PATHS	Location	Distance	Casa(jumpship)	AS 350 D-1 Astar	Cessna 206	Airtanker
From Tok at	63 19.8 x 142 57.1	Miles NM	10 pax + gear	4 pax + gear	5 pax	PB4Y/KC 97
			219 mph	124 mph	138 mph	184 mph
to			190 kts	108 kts	120 kts	160 kts
Alcan Customs	62 38.0 x 141 31.0	80 70	22 min	39 min	35 min	26 min
Allen Field	63 59.7 x 145 43.1	95 83	23 min	46 min	37 min	28 min
Boundary	64 04.7 x 141 06.7	78 68	21 min	38 min	34 min	25 min
Chicken	64 04.3 x 141 57.0	61 54	17 min	30 min	27 min	20 min
Copper River	62 02.0 x 145 25.0	120 104	32 min	58 min	50 min	37 min
Dawson	64 02.6 x 139 07.5	121 106	33 min	58 min	53 min	39 min
Delta	64 03.1 x 145 47.8	105 92	29 min	51 min	46 min	35 min
Dry Creek	63 41.0 x 144 38.0	48 42	13 min	23 min	21 min	16 min
Eagle	64 46.6 x 141 08.9	117 102	32 min	57 min	51 min	38 min
FBK	64 50.2 x 147 36.9	176 153	48 min	85 min	76 min	57 min
Joseph	64 24.0 x 142 32.0	74 64	20 min	36 min	32 min	24 min
Ladue Alcan Border	63 22.0 x 141 37.0	69 60	19 min	33 min	30 min	22 min
McGrath	62 57.2 x 155 36.2	406 353	111 min	196 min	176 min	132 min
Mentasta Lodge	62 52.8 x 143 35.4	37 33	11 min	18 min	16 min	12 min
Mosquito Flats	63 43.0 x 142 52.0	37 32	10 min	18 min	16 min	12 min
Mt. Fairplay	63 40.3 x 142 13.0	35 31	10 min	17 min	15 min	11 min
Northway	62 57.7 x 141 55.6	51 45	14 min	25 min	22 min	17 min
Palmer	61 31.8 x 149 01.1	230 202	63 min	111 min	100 min	75 min
Tetlin Village	63 02.0 x 142 36.0	16 14	4 min	8 min	7 min	5 min
Whitehorse	60 42.6 x 135 04.0	313 275	86 min	151 min	136 min	102 min
Delta	64 03.1 x 145 47.8					
to Northway	62 57.7 x 141 55.6	139 121	38 min	67 min	60 min	45 min
FBK	64 50.2 x 147 36.9					
to Alcan Customs	62 38.0 x 141 31.0	258 224	71 min			86 min
to Boundary	64 04.7 x 141 06.7	207 180	57 min			69 min
to Chicken	64 04.3 x 141 57.0	159 138	44 min			53 min
to Glennallen(Gulkana)	62 09.0 x 145 27.0	198 172	54 min			66 min
to Joseph	64 24.0 x 142 32.0	144 125	39 min			48 min
to Ladue Alcan Border	63 22.0 x 141 37.0	217 189	59 min			72 min
to Mentasa Lodge	62 52.8 x 143 35.4	184 160	50 min			61 min
to mt. Fairplay	63 40.3 x 142 13.0	185 161	51 min			62 min
to Mosquito Flats	63 43.0 x 142 52.0	161 140	44 min			54 min
to Northway	62 57.7 x 141 55.6	219 190	60 min			73 min
to Tanacross	63 22.2 x 143 20.0	168 146	46 min			56 min

TOK FORESTRY MEDICAL PLAN EMERGENCY PROCEDURES

Call for help. Call 911. Render first Aid, ABC's - Airway / Breathing / Circulation. Stabilize victim and provide care until help arrives. Notify Tok Forestry Dispatch as soon as possible. Dispatch will notify admin / finance (Sandy Gabbard) who accompany patient through the admissions process at clinic or hospital.

MEDICAL AID STATIONS/CLINICS

NAME	LOCATION	AMBULANCE	PHONE	HIGHEST LEVEL OF CARE
Tok Medical Clinic & Tok EMS	124.3 Glenn Hwy Tok, AK.	Yes	911 or 883-5855 cell 322-0878	MD/ANP/PA/ EMT III
Family Medical Clinic	Delta, AK.	No/they will dispatch Delta Rescue	895-5100	DO/ EMTIII
Fort Wainwright Mast Unit	FBK, AK	Helicopter	353-6314 353-6315	EMT III
Forty Mile Air	Tok, AK	Fixed wing medevac ship	883-5191 pilot cell #s 590-7390-91-92 Medics 322-0169,1665 1510	EMT III
Crossroads Medical Center	Glennallen, AK.	Yes	822-3203	MD / EMTIII
Warbelows Air Ventures	Fairbanks, AK.	Fixed wing	474-0518 1-800-491-1247	EMT III
AK Lifeguard Providence	Anchorage, AK.	Helicopter & Fixed wing	261-3071 1-800-478-5433	RN, ASL
AK Regional Lifeflight	Anchorage, AK.		264-1222 1800-478-9111	RN, Mobile Intensive Care Unit

HOSPITALS STATEWIDE

NAME	RADIO/ FREQ Lat x long	PHONE	TRAVEL TIME / AIR	TRAVEL TIME / GRND	BURN CENTER
Basset Hospital - Fort Wainwright	123.050 64.50 X 147.37	353-5143	1 hr fixed wing	4 hrs.	No
Denali Center Fairbanks Memorial	131.800 155.160 64.49 X 147.42	458-5565 458-5555	1 hr fixed wing	4 hrs.	Yes
Providence Hospital - Anchorage	155.325 61.11 X 149.49	562-2211 1-800-478- 5433	1.5 hr fixed wing	8 hrs.	Yes
Alaska Native Medical Center- Anchorage		563-2662	1.5 hr fixed wing	8 hrs.	No
Alaska Regional - Anchorage	130.450 61.12 X 149.51	276-1131	1.5 hr fixed wing	8 hrs.	No

Humana hospital is next to Merrill Field. Planes may taxi from field to hospital.

DEMOBILIZATION PLAN

The State Logistics Center (SLC) in Fairbanks requires a minimum of 24 hours advance notice of release of resources. This may increase to 48 or even 72 hours depending on the complexity of the incident(s) and number of resources involved. This period allows SLC time to reassign resources if possible.

No personnel assigned to Tok Forestry will be released without:

1. Turning in outstanding incident reports/unit logs.
2. Turning in any issued radios, equipment, & non-expendable supplies.
3. Obtaining supervisor's signature on time sheet.
4. Turning in a completed Demob Checklist.