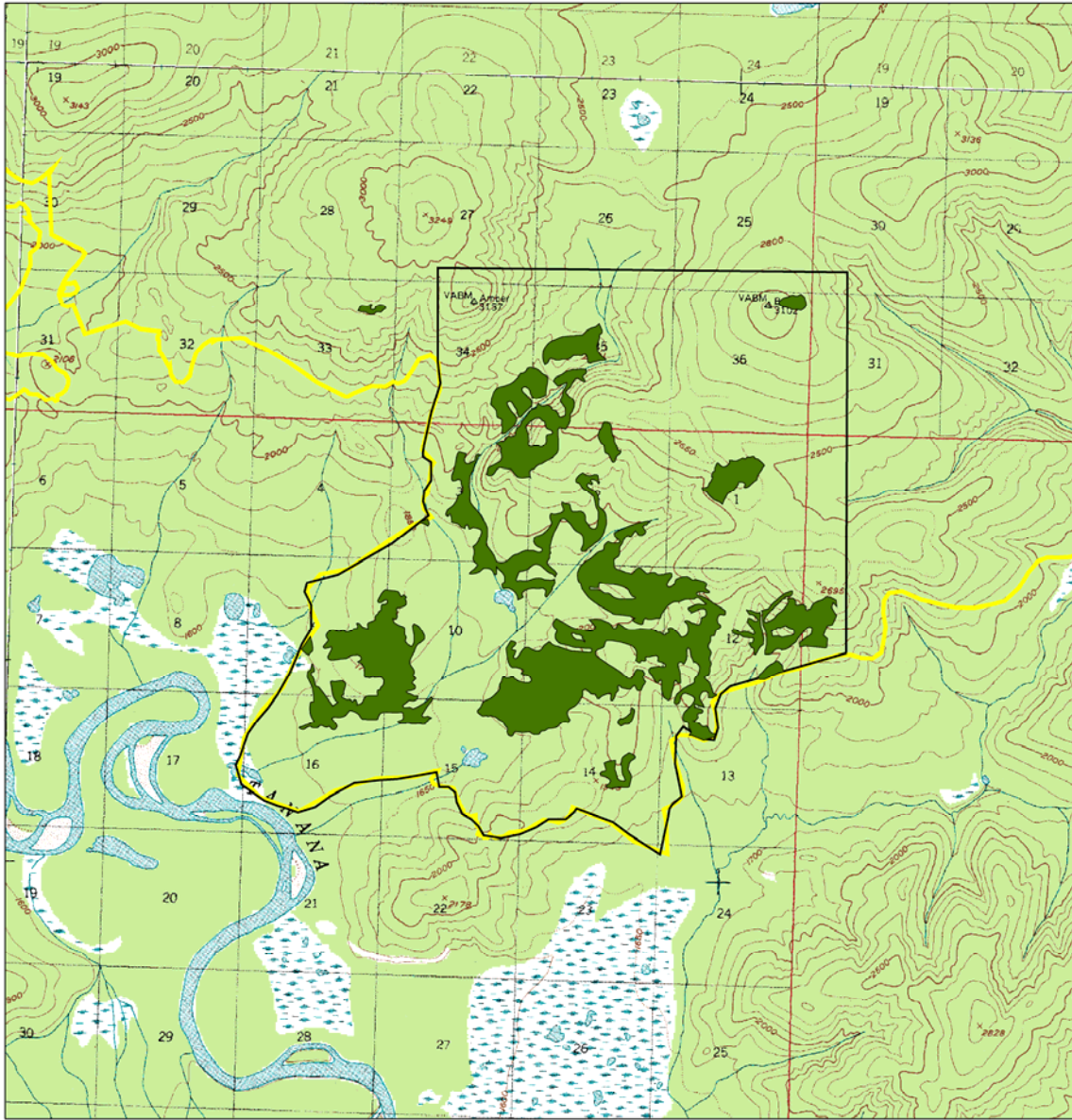


2009 – 2013 Tok Area Five Year Schedule of Timber Sales

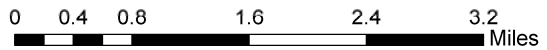


**Taylor Complex Salvage Logging Potential
South Porcupine Block-Porcupine Fire**

Legend	
	Taylor Complex Perimeter (09/03/04)
	South Porcupine Salvage Block
	Burned Conifer Stands (est. acres = 1498, est. volume = 6,837 mbf)

NOTE: All land status within this salvage block is Tanana Valley State Forest or State Land designated for Forestry.

Timber Volumes and conifer stand delineations were taken from the 1985 Tanana Valley State Forest Inventory. There may also be salvage opportunities in the mixed spruce/hardwood stands, but this survey concentrated on the pure spruce stands. The stand delineations include burned standing and down timber.



1 inch equals 0.5 miles