

STATE OF ALASKA

Department of Natural Resources
Division of Forestry

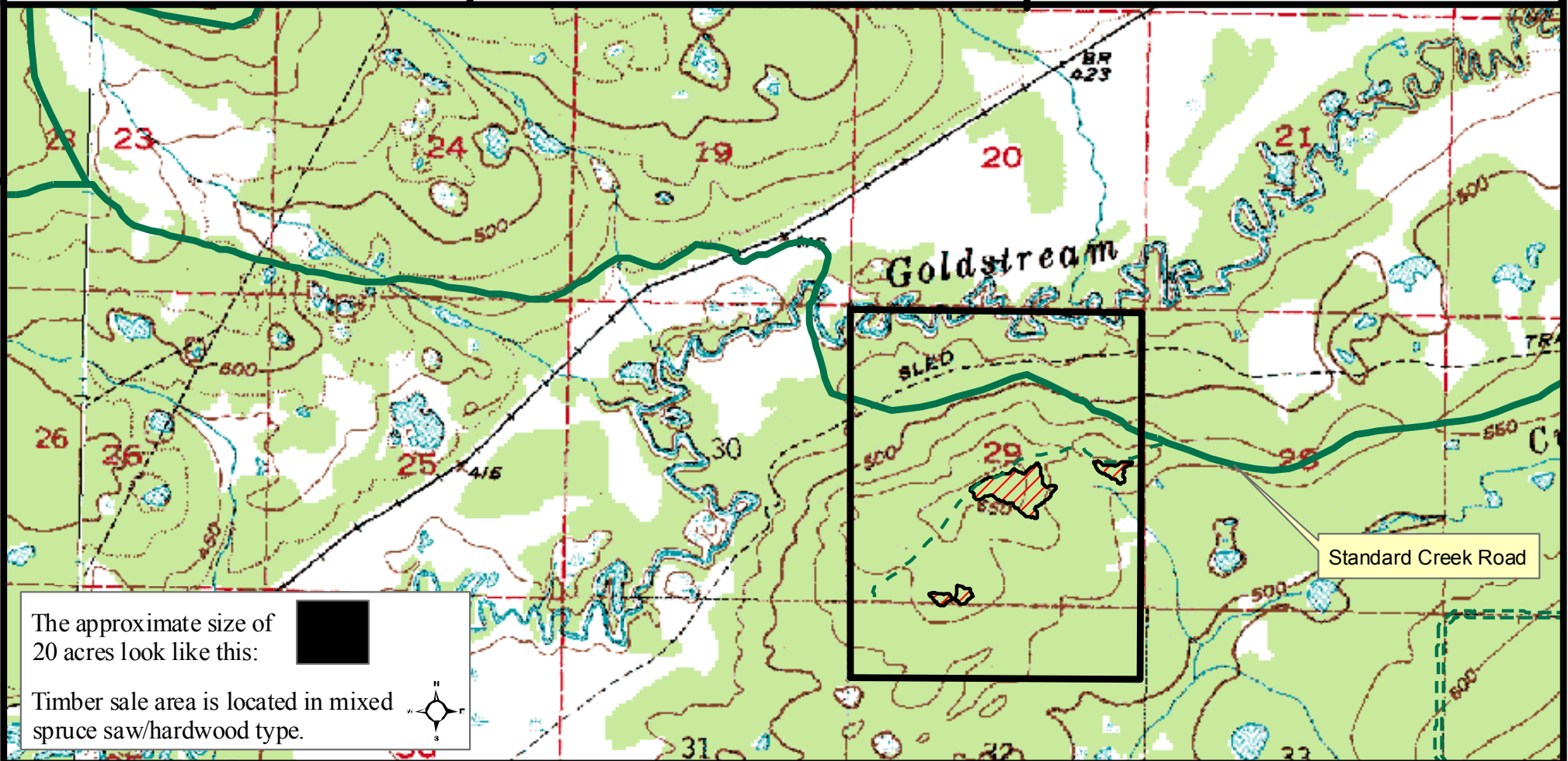
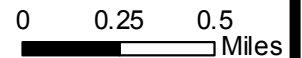
NC-1276-F
Standard 6 Mile Spruce
Sections 29 & 32
T1S, R4W

VICINITY MAP



- Primary Highway
- Secondary Highway
- Primary Road
- Secondary Road
- Spur Road
- Winter Road
- Trail
- Potential Harvest Area
- Proposed Roads
- Timber Sale Area

LEGEND



The approximate size of 20 acres look like this:



Timber sale area is located in mixed spruce saw/hardwood type.

