

Public Recreation (PR) Classified Subunits in Haines State Forest

Public Recreation Management Goals

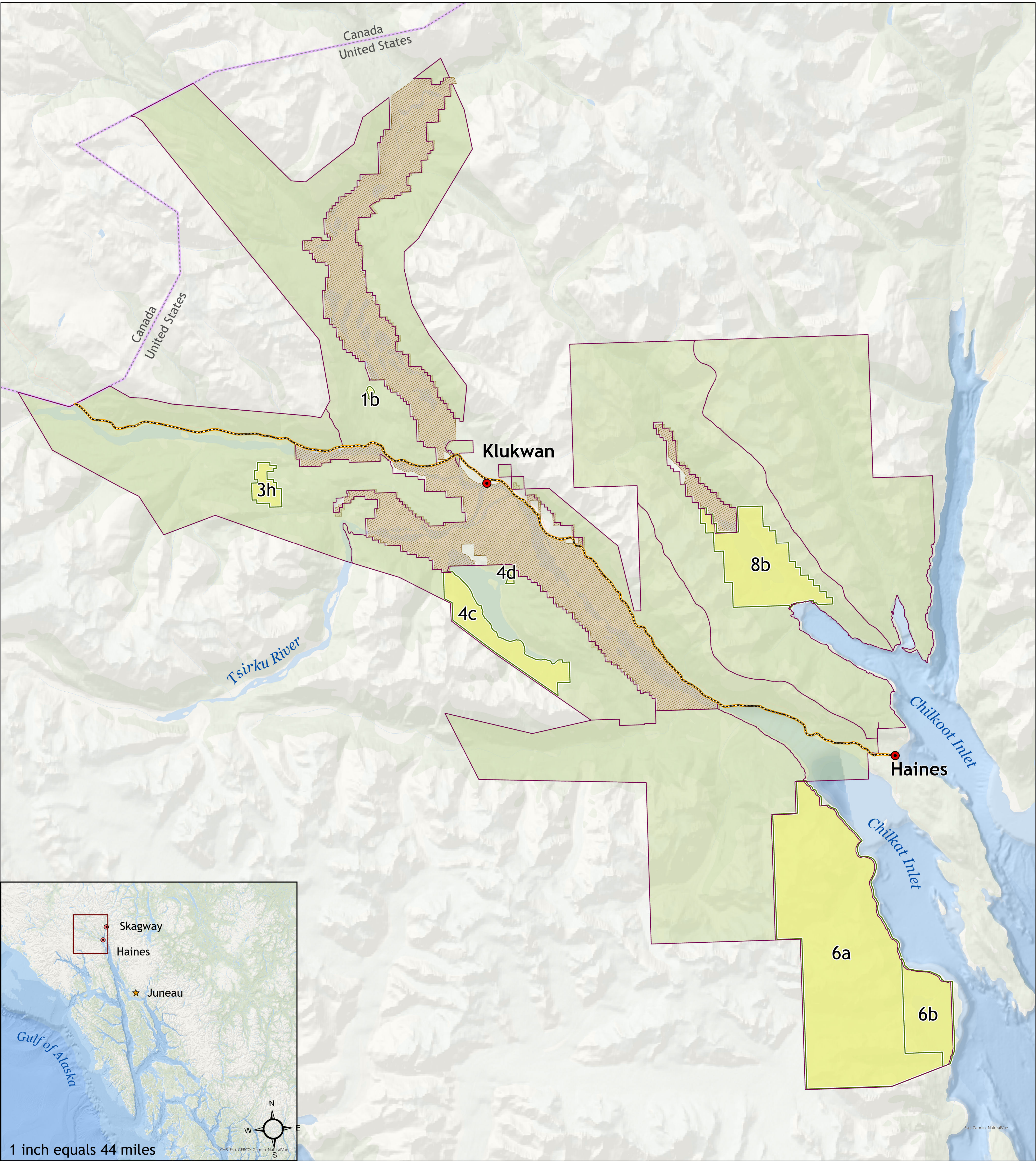
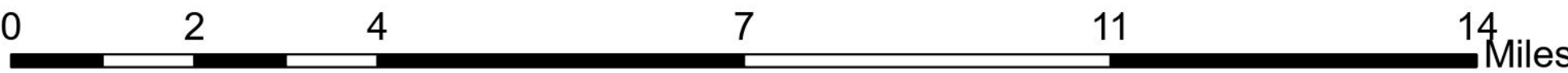
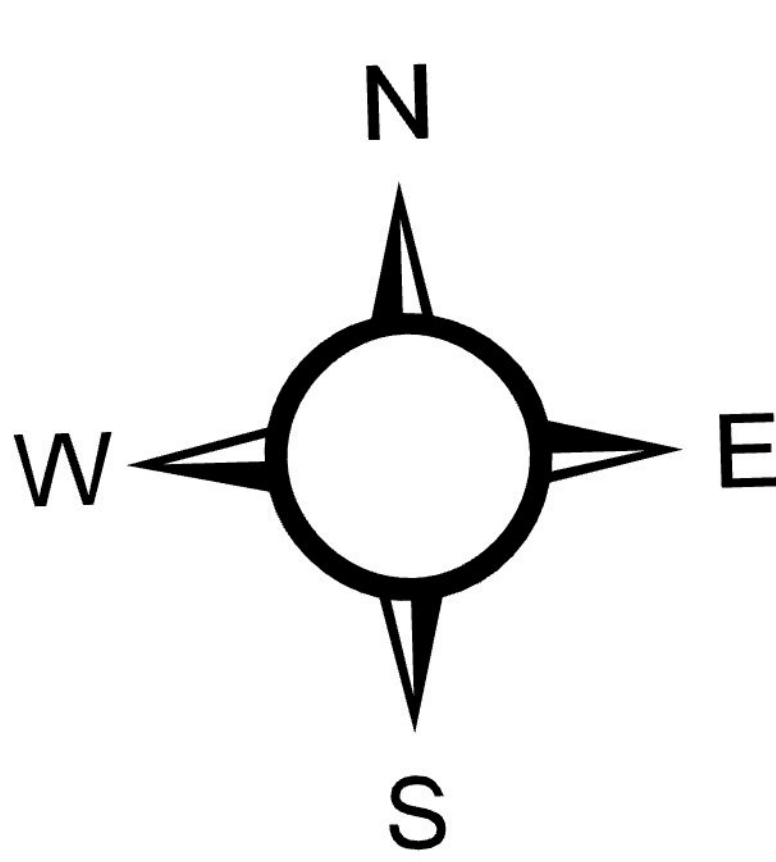
Haines State Forest will be managed to provide a range of recreational opportunities. Preference will not be given to one recreational use over another. The State forest will be managed to allow people to pursue "generally allowed" recreational activities, except in cases of Special Use Designations.

1. Encourage development of recreational uses and facilities
2. As feasible, complement or protect recreation values when conducting forest practices or other development or resource use projects.
3. Contribute to economy through commercial recreation
4. Allow and encourage a wide range of recreational uses
5. Ensure that public recreation activities are consistent with the need to protect natural features, fish and wildlife, & ensure scenic values
6. Allow appropriate commercial developments through leases or other authorizations where public recreation activities will effectively be provided by private enterprise.

- U.S. - Canada Border
- Haines highway
- Haines State Forest Resource Management Area
- Management Unit Boundary
- PR Classified Subunit
- Chilkat Bald Eagle Preserve

Subunit Names

- 1b - Mosquito lake Campground
- 3h - Herman & Walker Lakes
- 4c - West Chilkat Lake
- 4d - Chilkat Recreation
- 6a - West Chilkat Inlet
- 6b - Davidson Glacier/Lake
- 8b - Chilkoot Lake



Resource Management (RM) Classified Subunits in Haines State Forest

Resource Management Goals

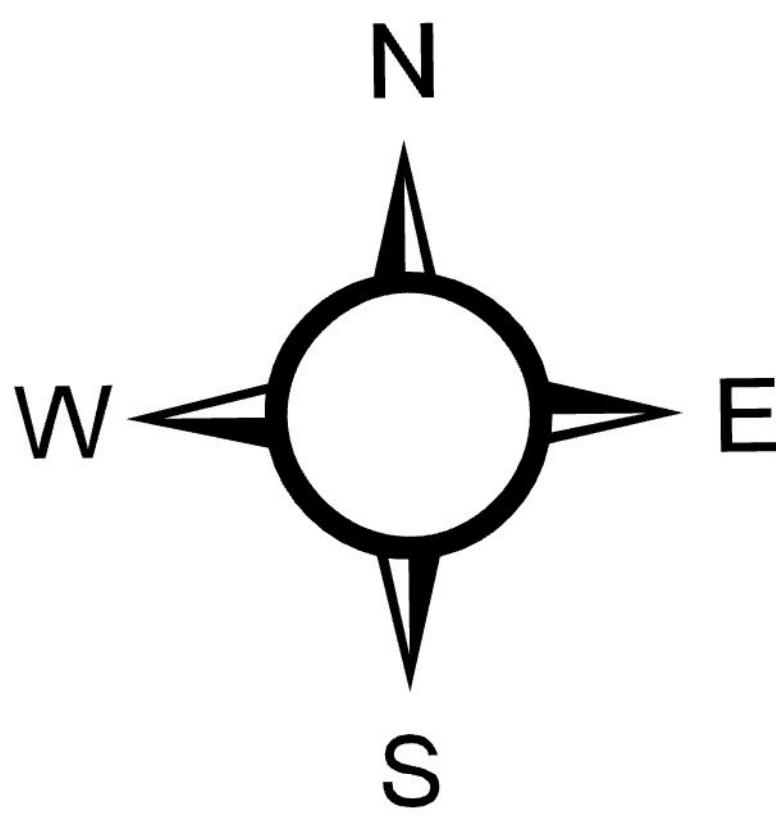
Resources identified by the HSF Management Plan that may fall into this use category include Subsurface Resources and Materials, Transportation, and Watersheds.

1. Contribute resource supplies to community, region, state, & nation.
2. Contribute to local, regional, & state economies, promoting job opportunities and stimulating growth of primary and secondary industries.
3. Aid in infrastructure development; manage Haines Hwy corridor for transportation and scenic values; Maintain State-owned timber access roads and bridges for public access.
4. Protect the integrity of the environment and affected cultures to the extent feasible in resource development and use.
5. Improve, maintain, or minimally impact existing watershed conditions, including groundwater, riparian areas, and streambank vegetation.

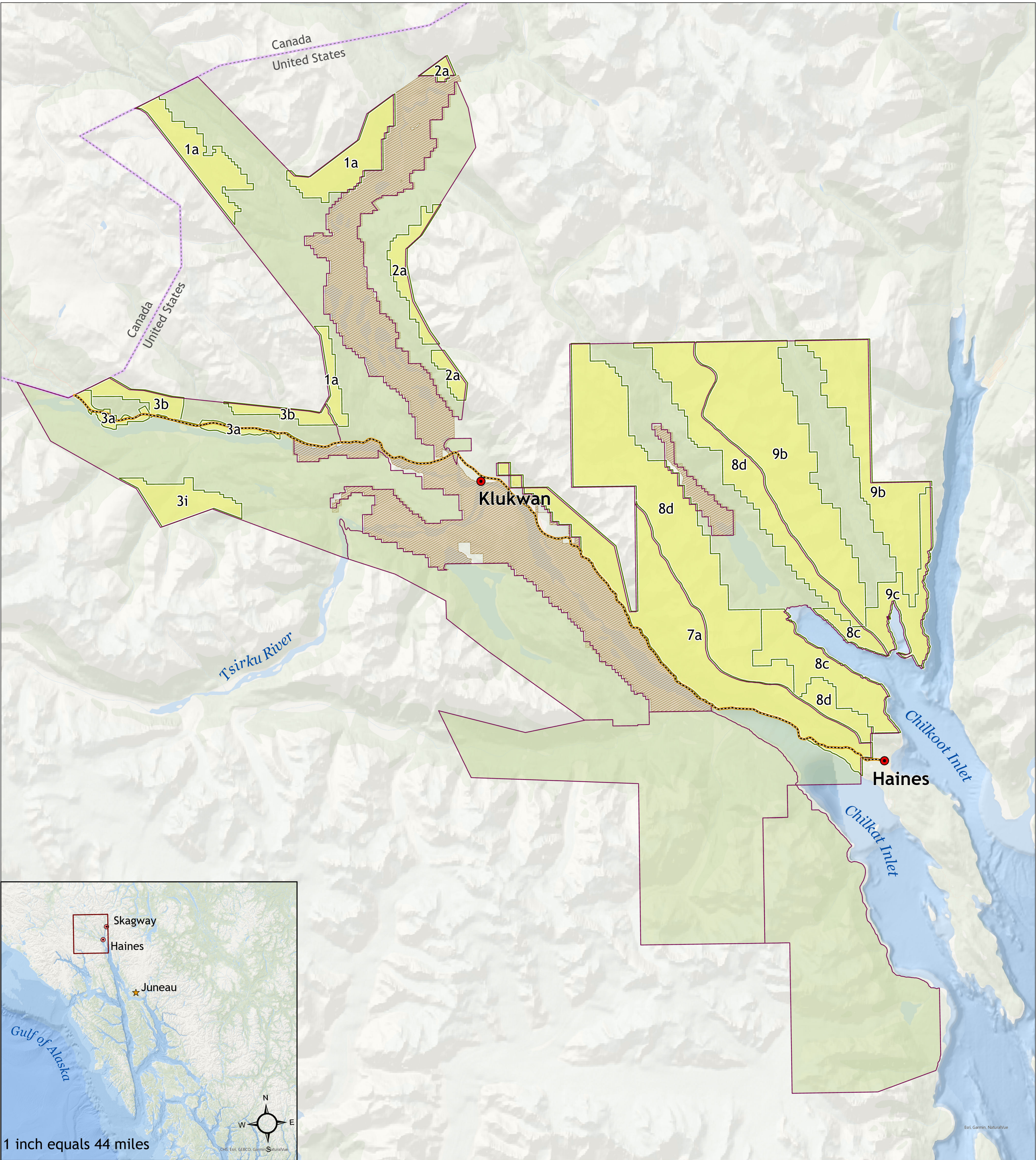
Subunit Names

- 1a - Kelsall Alpine Areas
- 2a - East Chilkat Alpine
- 3a - Haines Highway
- 3b - Klehini Uplands
- 3i - Porcupine Creek
- 7a - Haines Highway
- 8c - Lutak Inlet
- 8d - Chilkoot Alpine
- 9b - Ferebee Alpine
- 9c - Taiyasanka Harbor

- U.S. - Canada Border
- Haines highway
- Haines State Forest Resource Management Area
- Management Unit Boundary
- RM Classified Subunit
- Chilkat Bald Eagle Preserve



0 2 4 7 Miles



Wildlife Habitat (WH) Classified Subunits in Haines State Forest

Fish and Wildlife Habitat Management Goals

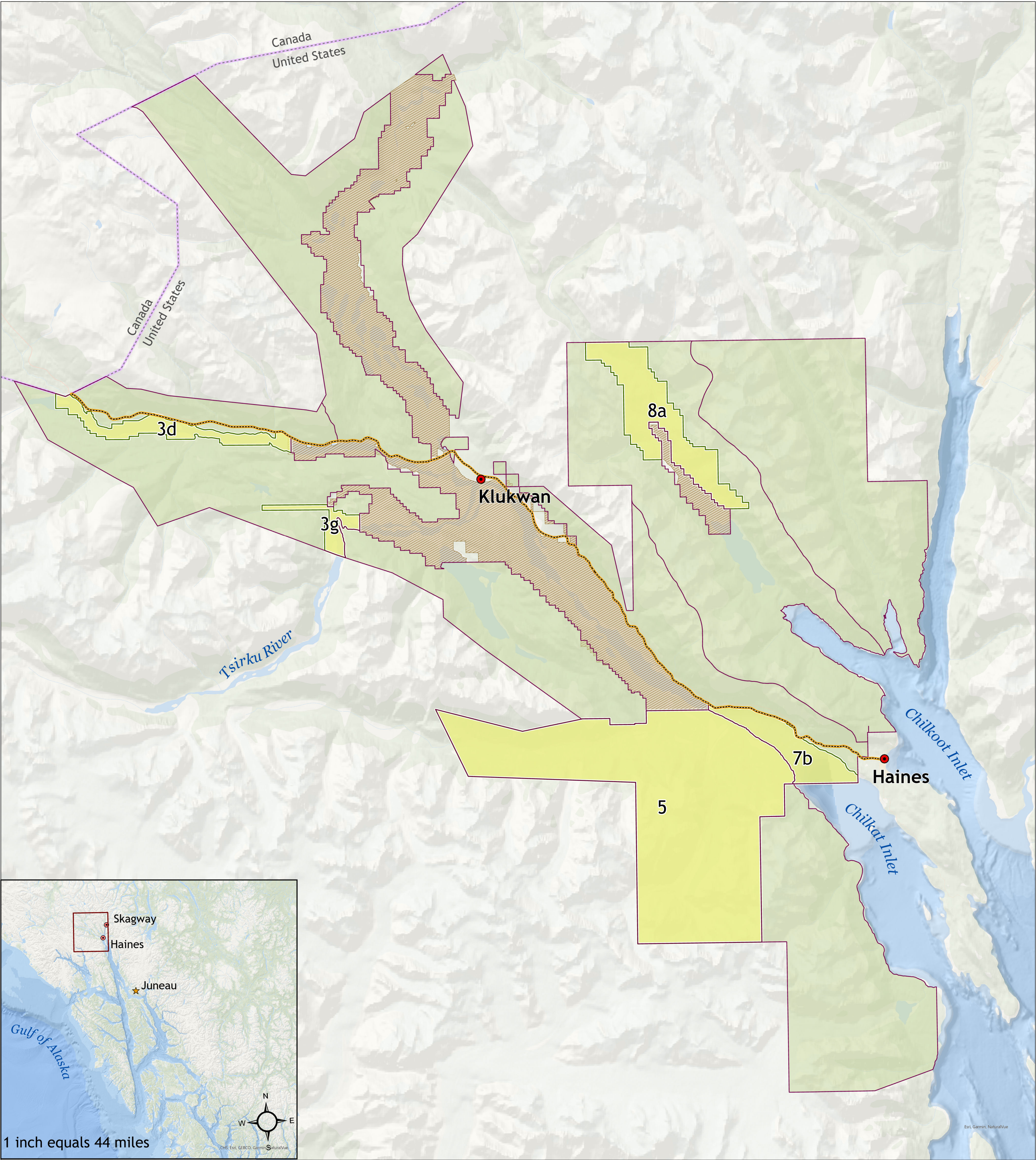
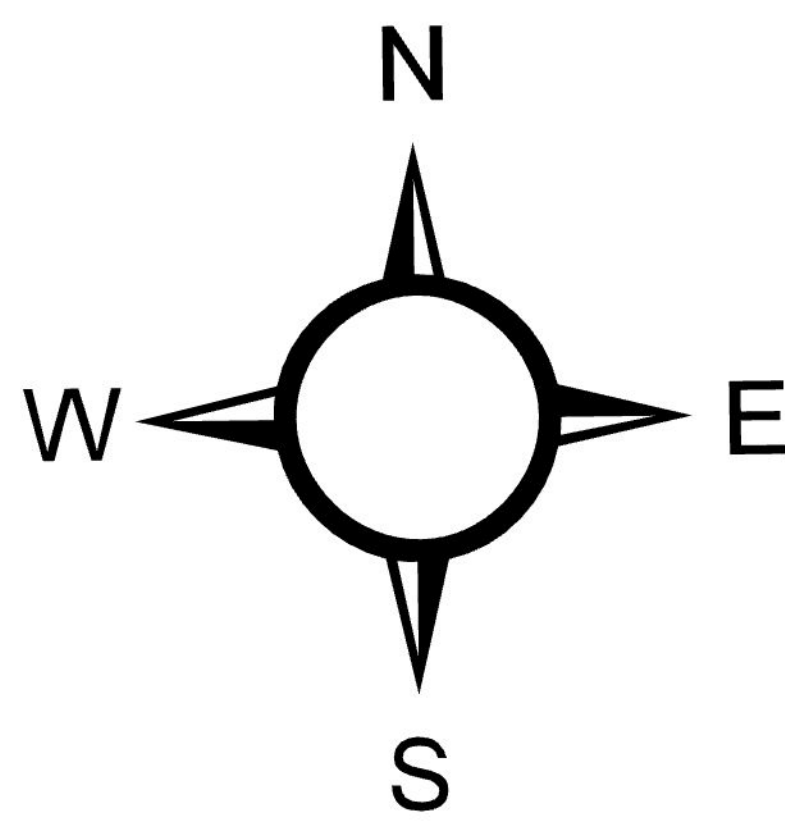
The State Forest contains valuable habitat for fish and wildlife species that support the economy and lifestyle of the Haines Community. Management of the Forest will minimize the impact on these resources, even in units classified as Forest Land.

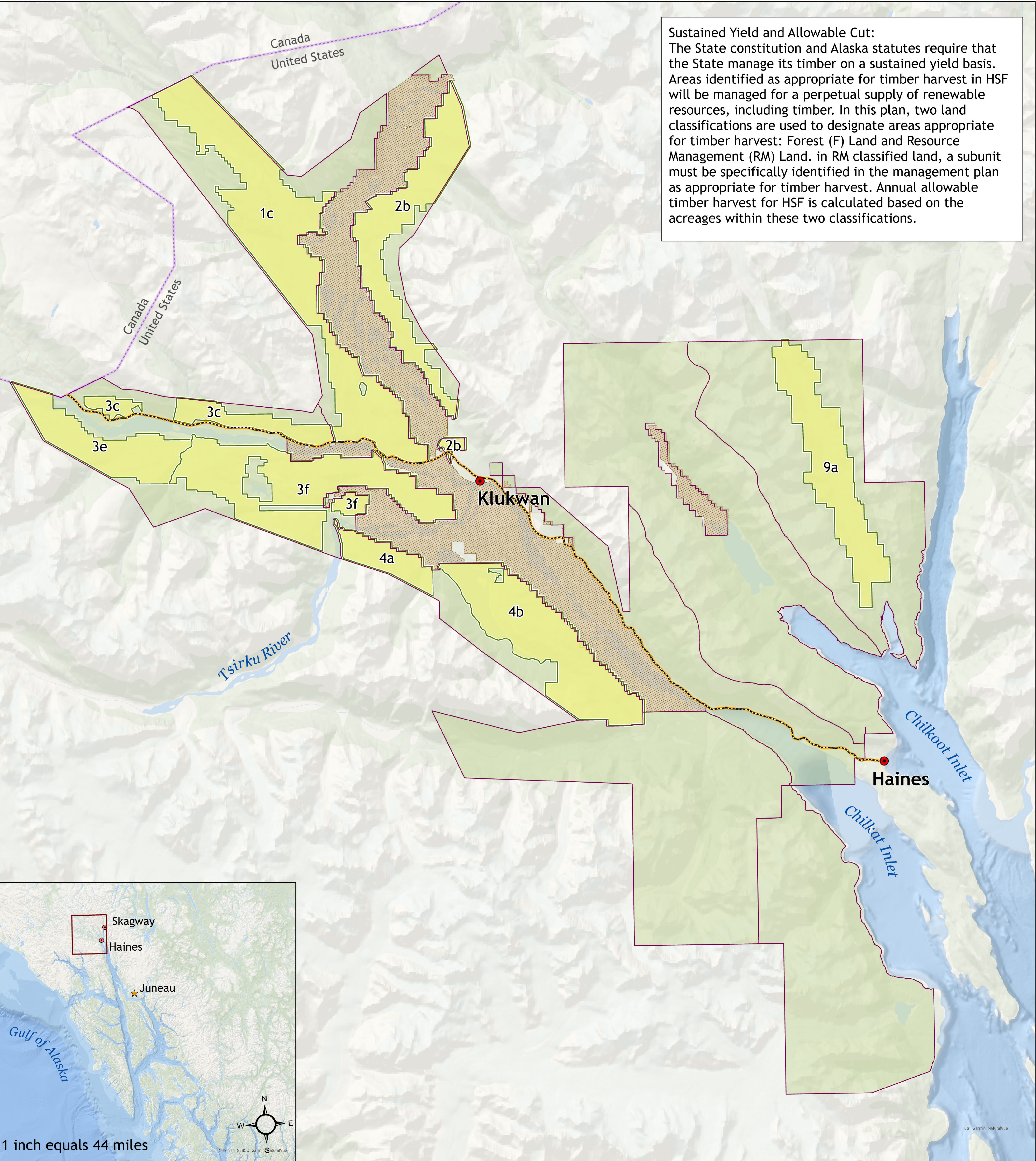
1. Maintain and enhance the fish and wildlife resources that support commercial, recreational, and subsistence activities in the Haines Area.
2. Maintain or Improve the level of water quality through sound land management, stream bank management, and silvicultural practice.
3. Maintain and enhance the existing diversity of fish and wildlife habitat through coordinated interagency management, habitat enhancement, site rehabilitation, and research programs.

Subunit Names

- 3d - Klehini River
- 3g - Tsirku West
- 5 - Tahkin/Kicking Horse
- 7b - Lower Chilkat River
- 8a - Upper Chilkoot River

- U.S. - Canada Border
- Haines highway
- Haines State Forest Resource Management Area
- Management Unit Boundary
- WH Classified Subunit
- Chilkat Bald Eagle Preserve





Forest Land (F) Classified Subunits in Haines State Forest

Forest Management Goals

The State's forest management goal for Southeast Alaska is to provide raw material for a viable timber industry in a way that is compatible with the conservation and sustained yield of all renewable resources that are important to present needs, consistent with the need to preserve future options. Generally, this strategy involves offering State timber to support wood product industries in SE Alaskan communities to provide jobs for residents by producing value-added products. Other secondary goals include:

1. Support of local jobs and economy; generation of revenue for the State through the sale of public resources.
2. provide a sustained yield of forest products including commercial timber, house logs, firewood, and dead or down timber for personal use.
3. Enhance the productivity of land dedicated to the production of forest products through management actions including planned harvest, regeneration, thinning, or conversion of non-forested "brush" areas
4. Generate and sell carbon offset credits through application of forest management practices. Requires a project managed by AK Office of Project Management & Permitting

Subunit Names

- 1c - Kellsall River Lowlands
- 2b - East Chilkat
- 3c - Haines Highway Uplands
- 3e - Jarvis/Glacier Creek
- 3f - Lower Klehini
- 4a - Devil's Elbow
- 4b - North Takhin
- 9a - Ferebee River Valley

- U.S. - Canada Border
- Haines highway
- Haines State Forest Resource Management Area
- Management Unit Boundary
- F Classified Subunit
- Chilkat Bald Eagle Preserve

