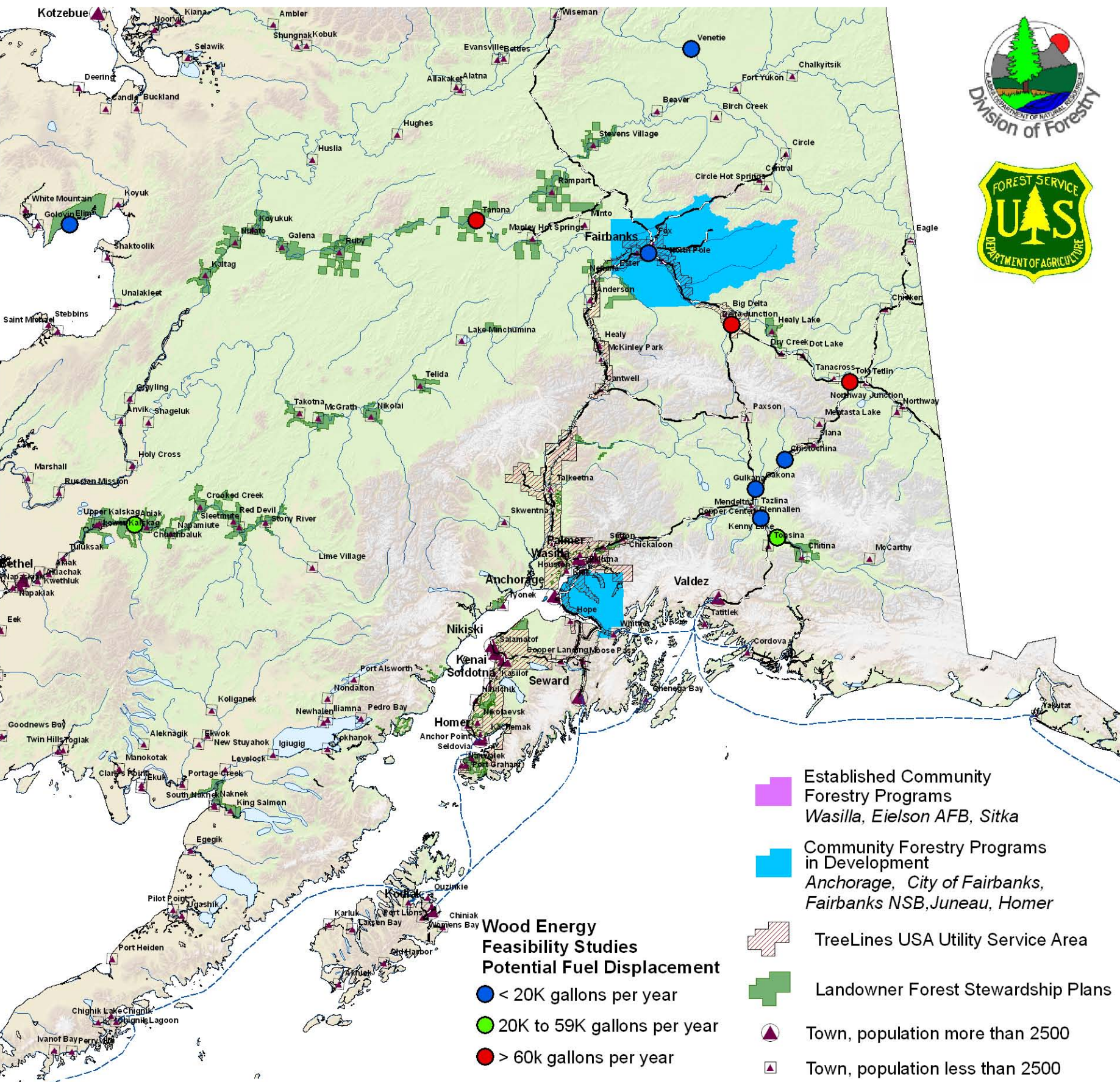


# Alaska Cooperative Forestry Programs



## Forest Stewardship Program

*To provide natural resource management planning services to non-industrial private forest landowners to protect, maintain, enhance, and/or improve forests and watershed health, diversity, productivity, and sustainability*



Technical assistance visit with forest landowner.

- 99 percent of Alaska's 20 million acres of private forest land is owned by Alaska Native corporations.
- 3 million acres of Native corporation forest land is under a Stewardship Plan.
- 650 individual landowners have completed Stewardship Plans on 40,000 acres.
- Important issues to private forest landowners are spruce bark beetle damage restoration, forest road maintenance, reforestation, and fuel wood.



Spruce bark beetle damage

## Alaska Community Forestry Program

*To encourage and support sound management of forest ecosystems in Alaska communities.*

- There are Six Tree Cities USA and three Tree Lines USA utilities in Alaska.
- The state program leveraged over \$130,000 in local support in 2006.
- Volunteers donated over 1,930 hours.
- The state program provided educational, financial, and/or technical assistance to 13 communities.
- 85 percent of Alaskans live in communities with at least one component of a community forestry program: 1) professional forestry staff, 2) tree ordinance, 3) management plan, 4) advisory or advocacy group.
- Division of Forestry staff provided 1,368 seat hours of training in 2006.



Anchorage TREErific volunteer tree planting



In 2002, Wasilla Mayor Sarah Palin celebrated Arbor Day by planting a tree in a city park. Wasilla is one of six Alaska communities designated as a Tree City USA.



Sitka Tree City USA ceremony

## Wood Energy Program

*To increase the use of wood for energy and biofuels production.*

- The closure of major pulp mills in the 90's ended large-scale wood-fired power generation, however wood remains an important renewable energy source.
- Recent increases in oil prices have raised interest in using sawmill residues and other woody biomass as fuel for lumber drying, space heating, and small-scale power production.

### Alaska Wood Energy Development Task Group

- Established in 2004 and composed of 14 agencies and organizations.
- Providing funds and expertise for 29 feasibility studies and one engineering and design project.
- Craig schools and community aquacenter will be heated by wood starting in Fall 2007.



Craig ground breaking



Craig community aquacenter



Dot Lake Garn unit



Logging and Milling Lumber Company sawdust pile. Dry Creek, Alaska

## Forest Legacy

*To maintain the environmental, social, and economic benefits of forests by reducing their conversion to other uses.*

A partnership between the Alaska Division of Parks & Outdoor Recreation and USFS Alaska Region State & Private Forestry, and in cooperation with non-profit organizations.

Projects completed:

- Colorado Creek - 239 acres
- Gorman/Sorenson Native allotments - 203 acres

Projects in progress

- Diamond Creek - 423 acres
- Agulowak River - 1,183 acres



Colorado Creek Forest Legacy Project

