

Proposed Susitna Valley State Forest

Labeled by Unit Number from Management Plan

Proposed State Forest Additions

Map features include:

- Management Units:** Labeled with codes such as R03, U26, B10, U07, U04, M07, U24, U03, S35, and 01.
- Water Bodies:** Susitna River, Johnson Creek, Skwentna River, Hayes River, Peters Creek, Khatlina River, Lake Creek, Moose Creek, Trapper Creek, Willow Creek, Alexander Creek, Beluga Lake, and the Knik Arm of the Chukchi Sea.
- Glaciers:** Trimble Glacier and Capps Glacier.
- Infrastructure:** Parks Highway and the town of Susitna.
- Recreation Area:** Nancy Lake State Recreation Area.
- Scale and Orientation:** A scale bar from 0 to 30 miles and a north arrow.
- Source:** Airbus, USGS, NGA, NASA, CGIAR, NCEAS, NLS, OS, NMA, Geodastysrlsen, SSA, GSI and the GIS User Community.

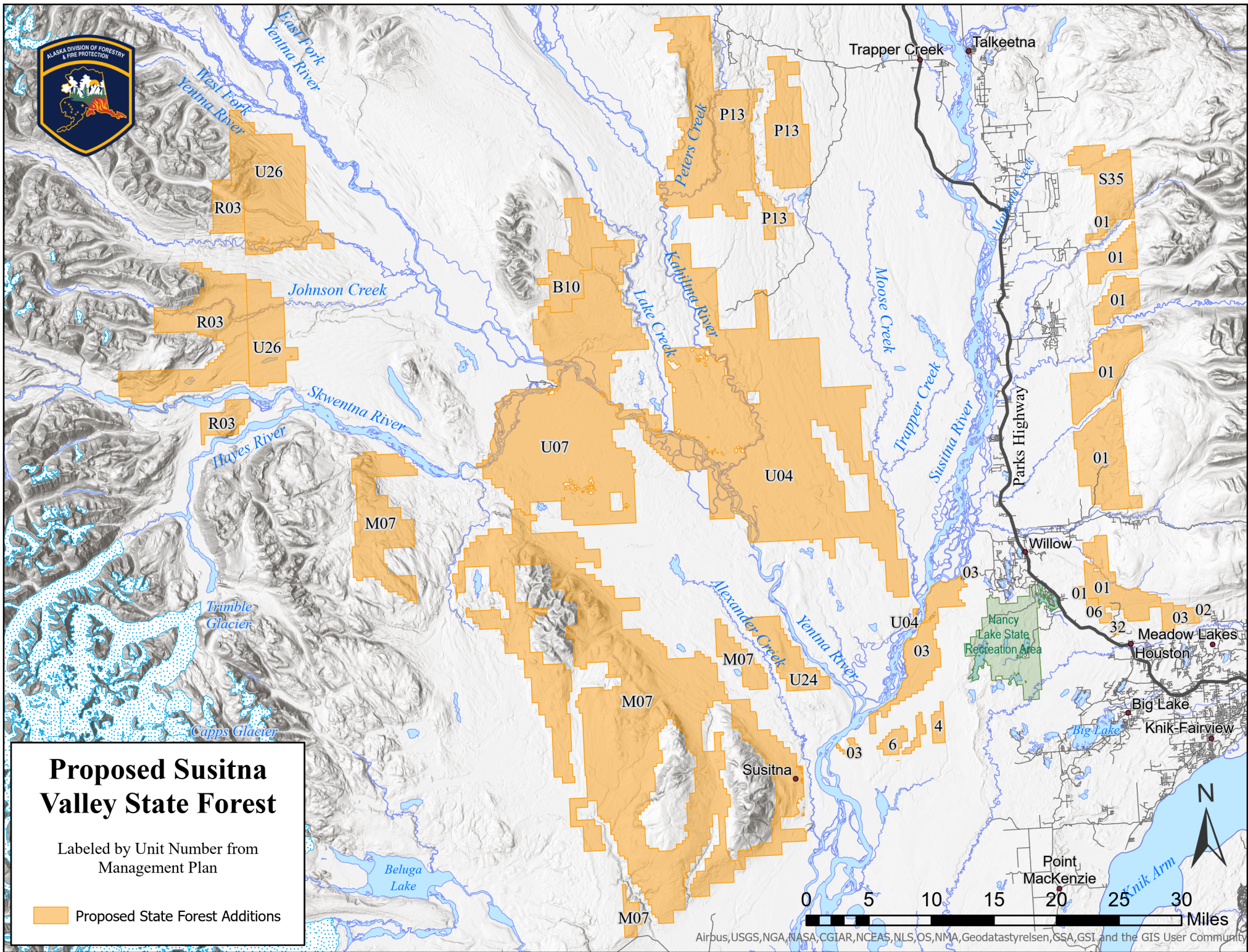
Proposed Susitna Valley State Forest

Labeled by Unit Number from Management Plan

Proposed State Forest Additions

Map features include:

- Geographical Features:** East Fork Yentna River, West Fork Yentna River, Johnson Creek, Skwentna River, Hayes River, Trimble Glacier, Capps Glacier, Beluga Lake, Alexander Creek, Yentna River, Peters Creek, Khatlina River, Lake Creek, Moose Creek, Trapper Creek, Susitna River, Knik Arm.
- Management Units:** R03, U26, B10, U07, U04, M07, U24, U03, U06, U02, U01, S35, P13.
- Locations:** Trapper Creek, Talkeetna, Willow, Nancy Lake State Recreation Area, Meadow Lakes, Houston, Big Lake, Knik-Fairview, Point Mackenzie.
- Infrastructure:** Parks Highway.
- Scale:** 0 to 30 Miles.
- Legend:** Orange shaded areas represent Proposed State Forest Additions.
- Logo:** Alaska Division of Forestry & Fire Protection.
- Source:** Airbus, USGS, NGA, NASA, CGIAR, NCEAS, NLS, OS, NMA, Geodastysrlsen, SSA, GSI and the GIS User Community.

[illegible]

Proposed Susitna Valley State Forest

Labeled by Unit Number from Management Plan

Proposed State Forest Additions

Map details include:

- Geographical Features:** East Fork Yentna River, West Fork Yentna River, Johnson Creek, Skwentna River, Hayes River, Trimble Glacier, Capps Glacier, Beluga Lake, Alexander Creek, Peters Creek, Khatlina River, Lake Creek, Moose Creek, Trapper Creek, Susitna River, Knik Arm.
- Management Units:** R03, U26, B10, U07, U04, M07, U24, U03, U06, U02, U01, S35, 01, 03, 02, 04, 06, 32.
- Locations:** Trapper Creek, Talkeetna, Willow, Nancy Lake State Recreation Area, Meadow Lakes, Houston, Big Lake, Knik-Fairview, Point Mackenzie.
- Infrastructure:** Parks Highway.
- Scale:** 0 to 30 Miles.
- Legend:** Orange shaded areas represent Proposed State Forest Additions.
- Logo:** Alaska Division of Forestry & Fire Protection.
- Source:** Airbus, USGS, NGA, NASA, CGIAR, NCEAS, NLS, OS, NMA, Geodastysrlsen, SSA, GSI and the GIS User Community.