

**DIVISION OF FORESTRY
FAIRBANKS-DELTA**

**FIVE YEAR SCHEDULE OF TIMBER SALES
Fiscal Year
2024-2028**



Submitted By:

Kevin Meany
Northern Region Forester

Prepared By:

Andrew Allaby
Resource Forester

Division of Forestry & Fire Protection
Department of Natural Resources
State of Alaska
3700 Airport Way
Fairbanks, Alaska 99709
Phone: (907) 451-2626 Fax: (907) 458-6895

**ALASKA DEPARTMENT OF NATURAL RESOURCES
DIVISION OF FORESTRY & FIRE PROTECTION
FAIRBANKS-DELTA
Five-Year Schedule of Timber Sales (FYSTS)
Fiscal Year 2024-2028**

This Five-Year Schedule of Timber Sales (FYSTS) provides information about planned and / or proposed timber sales and associated road construction in the Fairbanks and Delta Management Areas. This schedule is planned to support the local forest industry along with providing for the local demand of woody biomass and fuelwood.

Purpose of the Five- Year Schedule of Timber Sales

This schedule is a scoping document that provides a timeline that identifies timber sales, their volumes, and their locations. It must contain enough information to provide the public and the forest products industry with a basis to comment on proposed sale offerings. The timber sales included in this schedule are part of a management policy that ensures a sustained yield of renewable forest resources and the integrated use of forest lands by a myriad of users, as guided by Alaska State statutes and regulations, the Tanana Valley State Forest Management Plan, and the State of Alaska DNR's Yukon Tanana Area Plan (YTAP, 2014) and Eastern Tanana Area Plan (ETAP, 2015). Sales are located across a wide area of the forest land base, they vary in size, species composition, and developmental requirements. Emergency salvage sales, market conditions, sale preparation challenges, logistical constraints, funding and other considerations may cause some proposed sales to be dropped or moved between years.

Generally, the Division of Forestry (DOF) may not offer a timber sale unless it has appeared on at least one of the two Five-Year Schedules immediately preceding the sale. Sales are exempt from this requirement if they are: 160 acres or less; will cause substantial losses of economic value on salvage sales; or emergency sales in areas with fire; allow for the spread of damaging insects, or other natural threats; or preclude a local economic enterprise or forest management project that is in the state's best interest. (References: AS 38.05.113, AS 38.05.117, and 11 AAC 71.010)

Timber Sale Land Base

The forest management activities identified in this Five-Year Schedule of Timber Sales 2024-2028 are consistent with the Yukon Tanana Area Plan (YTAP), Eastern Tanana Area Plan (ETAP) and the Tanana Valley State Forest (TVSF) Management Plan. The TVSF Plan covers approximately 1.81 million acres of forest-designated lands in the Fairbanks and Delta Areas, and the ETAP/YTAP provide management guidance on all types of state land over an even larger area. Large tracts of forest are in forestry designation, and can have multiple designations such as wildlife habitat, recreation, and settlement. These sales have the potential for multiple project goals such as timber production, wildlife habitat enhancement, wildland fire fuels mitigation, and development of settlement lands.

Management Intent of the DOF Timber Sale Program

DOF’s management intent for Fairbanks-Delta Area is to provide raw material available for harvest to the local/regional timber businesses of all sizes and to Alaska’s Interior communities for personal use. This FYSTS is designed to meet the current and anticipated demands for timber and fuel in the Fairbanks-Delta Area for the next five years.

Forest access roads will be constructed to meet DOF Road and Bridge Standards, the TVSF Management Plan, the ETAP and YTAP and Best Management Practices for the Alaska Forest Resources and Practices Act. Road construction is divided into two main categories: winter road only and all-season road. DOF will work closely with ADF&G staff, relevant Advisory Committees, and private landowners on creating road access that meets the needs of multiple user groups. Future road development will focus on quality design and location, though gates to prevent highway vehicle access may be employed for seasonal closures or to protect sensitive values. This will improve all season road conditions, cost of maintenance, and provide for year-round access. Where pertinent, approximate access routes have been indicated in maps. DOF will address access development and roads in detail with each of the Best Interest Findings and Forest Land Use Plans (FLUP) for every proposed timber sale submitted for agency and public review.

The Fairbanks-Delta Area DOF office works closely with ADF&G biologists on timber harvest activities and wildlife habitat enhancement projects to minimize impacts of road construction and timber harvest on fish and wildlife resources. DOF will look at every timber harvest opportunity to maximize the habitat benefit for wildlife where feasible. Projects with dual goals of timber harvest and habitat enhancement are included in this plan. In line with TVSF Management intent and Plan Guidelines, as well as following established habitat best management practices (see for example Paragi et al 2020, “Managing Boreal Forest for Timber and Wildlife in the Tanana Valley of Eastern Interior Alaska”).

Timber Harvest

Overview

Harvest activity is trending upward for the Fairbanks-Delta Area over the past 5 years, and DOF seeks to support growth of the timber industry and Alaskans’ access to their natural resources through offering a wide variety and increasing number of timber sales and associated road network upgrades. An increasing reliance of smaller scale operators on Small Negotiated Sales (AS 38.05.115) has elevated the total number of sales, but also demand has increased for all timber products. Higher demand has reduced the backlog of unsold sales on the Over-the-Counter (OTC) list, and piqued interest among larger timber buyers of obtaining long term contracts with the State. The State is finalizing planning on four Long Term timber sales (AS 38.05.118, referred to as “Long Term Sales”), 3 in the Fairbanks Area and 1 in the Tok Area. Long Term Sale units are included for scoping as part of the Fairbanks-Delta FYSTS, in addition to sales that will be sold through the usual Competitive Bid (AS 38.05.120) and the Small Negotiated Sale pathway.

Date sold by Fiscal Year

Fiscal Year	FAIRBANKS		DELTA	
	Acres	Sales	Acres	Sales
2020	162	9	135	9
2021	362	14	265	8
2022	620	15	198	11
2023	480*	15	295	13
2024	878	18	134**	21
Average	500	14	205	12

*includes assignment of unharvested sale NC-1349-F

**14 Pogo Rd salvage decks sold with acreage = 0

Transportation and Access

Forest roads are created specifically to facilitate silvicultural activities involved in managing a productive forest, such as harvest of forest products, fire suppression, forest health and reforestation monitoring, pre-commercial treatments, etc. Most of the forest road system was built by loggers as part of timber sale contracts. Forest roads are built and maintained according to the 2016 DNR-DOF Road & Bridge Standards, and Foresters routinely inspect and monitor road conditions. Winter-only routes are used to minimize disturbance in areas of permafrost, high water tables, or with stream crossings, and much of the total volume harvested on State land occurs during the winter.

Once constructed, forest roads are a valuable asset to future logging operations, which benefit from lower operating costs to obtain and maintain access to merchantable timber. The public benefits from the access provided via the logging road system for firewood, hunting and trapping, recreation, and subsistence activities among many other compatible uses.

Ultimately, DOF envisions all areas of merchantable timber within TVSF and Forestry-classified general state lands will be connected to the road network. Larger sales have higher stumpage values and can support larger road projects. More experienced Operators purchase these larger sales, and have the expertise and equipment to complete road projects.

Some of the proposed sales in this FYSTS involve new construction, for example extensions of existing forest roads like the Two Rivers or Mosquito Creek. Some sales support the creation of brand-new access, for example across Hayes Creek in TVSF Subunit 4A or the Rowland sale area north of Pogo Mine Road.

Many of the sales in this FYSTS utilize existing forest roads, often with an objective to upgrade access. Upgrades facilitated through these timber sales include hardening, widening, or grading the surface; improving ditches and drain dips; brushing the right-of-way; constructing pullouts and parking areas; and installing or replacing bridges and culverts. Sales that are likely to include roadwork upgrades include the larger birch and mixed wood sales on Standard East Road or spruce sales down Rosie Creek and Pagh Roads.

Biomass / Fuelwood Harvests

In the Fairbanks Area, Aurora Energy Solutions, LLC, continues to scale up their bulk firewood operations, especially of birch. Aurora operates a firewood kiln that utilizes waste heat from the Fairbanks Coal Power Plant to efficiently dry wood below the Fairbanks-Northstar Borough's (FNSB) 20% moisture standard (implemented October 2021). This business model has generated a growing demand for large birch and mixed wood stands. Over the past 4 years, Aurora purchased 17 sales totaling 1,178 acres with 22,542 cords (20,288 CCF). A portion of these sales include a mixed sawlog/fuelwood component, which was merchandized in partnership with a local wood mill. Therefore, DOF is offering an increased number of birch and mixed wood sales in the Fairbanks area to meet this market demand, particularly through the Long-Term Sale pathway (AS 38.05.118).

Salvage harvests of all kinds are in high demand both among the wood-cutting public as well as numerous firewood-selling operations in the Fairbanks-Delta Area. High fuel prices tend to correlate with high firewood demand. Small batch or less capitalized operators may find it desirable to avoid lengthy or expensive drying processes involved in green sales. The fuelwood value of fire salvage is longest for standing spruce, and declines quickly for birch or trees in contact with the ground. In Delta, recent auctions have seen highest bidding activity on fire salvage timber. To meet this demand, DOF will offer salvage wherever economic opportunities are available. In Delta, the 2023 Pogo Mine Road Fire burned significant mature stands of spruce, which will be offered over the next 3 years. In the Fairbanks Area, a recent access agreement between Alaska Department of Natural Resources (DNR) and FNSB will facilitate access to the 2011 Hastings Fire Salvage area, a previously landlocked portion of TVSF Unit 4A.

New startups and smaller logging operators continue to express interest in lower volume/acreage sales that fit their production capacity needs and are within their economic range. These sales generally involve fuelwood or mixed species areas along the existing road network. Demand for

small sales < 10 acres has historically been met through small timber sales negotiated under AS 38.05.115, and comply with regulations established in 11 AAC 71.045. From 2020-2023, Fairbanks-Delta area sold an average of 13 sales totaling 98 acres through the small negotiated sale program. To proactively meet this need, many small sales that are likely to be sold through AS 38.05.115 have been included on this FYSTS.

DOF has proposed to offer for sale approximately 2,900 acres of white spruce, birch and balsam poplar sawtimber and fuelwood to be harvested over a 25-year period from state lands within Township 8 South, Range 9 East, Kateel River Meridian, roughly 2 ½ miles northwest of Galena, Alaska. A request for timber sales has been made by the village to DOF to supply a wood chip fired boiler that is being installed in the Galena Interior Learning Academy. DOF would sell the timber either as a competitive or negotiated sale for commercial use.

Sawlog Harvests

Demand for sawlog sales in the Fairbanks-Delta Area has been steady, with some signs of future increase. While there are only a few larger mills in the Fairbanks-Delta Area, purchases of sawlog sales have increased over the past 5 years. Mill operators from Southcentral Alaska have also increasingly looked north of the Alaska Range, particularly in the Anderson and Nenana areas, to get raw logs in the aftermath of the heavy tree mortality in the Mat-Su area from spruce beetle outbreak.

Sawlog Sales for Fairbanks and Delta
only sales where Primary Product = Sawlog

Fiscal Year	Acres	CCF	MBF
2020	118	2,917	1,138
2021	354	6,759	2,636
2022	292	7,412	2,891
2023	194	4,687	1,828
2024	295	8,116	3,165
Average	251	5,978	2,331

Local consumer interest in primary products such as cabin logs, tongue and groove, and dimensional lumber is high, and level of inquiries from potential operators as well as the public have increased over previous years. However, operators are experiencing increasing costs for fuel, shortages of parts, aging equipment and staff, and high competition in the labor market. These factors may hamper the entrance of new logging operators and the expansion of existing operations. To address the sawlog demand of both large mills and small operators alike, DOF has included a wide range of access types and sale sizes.

Additionally, some sawlog needs are being met through mixed wood sales as a result of a harvesting partnership between a large firewood processor and a local mill with product sorted at the landing.

9 of 19 current Over-the-Counter (OTC) timber sales in the Fairbanks Area are spruce sawlog sales; all but one OTC sawlog sale has some contractually-required project work to access the sale area. This suggests that winter-only access and road-building present a significant expense for the local industry. However, Operators within the Area possess expertise and equipment relevant for larger forest road projects especially when larger tracts of timber may be accessed. This Schedule includes larger tracts of timber where road building is required, and incorporates some all-season sales near, but outside of, the State Forest boundary.

All sawlog harvests will be planned to occur on the landscape in a patch mosaic utilizing natural lines and limited viewsheds. Many of the roads accessing the harvest units are designed for all-season, long-term access for forest management and public use. The FLUPs will address details of harvest, roads and all other important considerations. Some harvest units have been previously reviewed under different sale numbers and FLUPS. As these units are harvested, DOF will review the plan to ensure harvest design and transportation routes continue to be in line with the original FLUP.

Sustained Yield

The Alaska Land Act requires that state land be managed for sustained yield, which is “the achievement and maintenance in perpetuity of a high level of annual or regular periodic output of the various renewable resources of the state land consistent with multiple uses” (AS 38.04.910). In each of the years covered in this schedule, the total volume of wood proposed for harvest is far below the potential sustained harvest level determined in the Timber Inventory of State Forest Lands in the Tanana Valley (Hanson, 2013). For the four Management Areas, the Timber Inventory of State Forest Lands in the Tanana Valley (Hanson, 2013) indicates that the annual sustained yield level on State forested land with a forestry designation and typed as commercial timber stands is approximately 13,974 acres. Thus, the proposed average yearly harvests for this schedule, constitute less than the volume or acreage of the sustained yield on Forest designated lands.

The proposed harvest on state lands with a Land Use Designation of Settlement are not part of and are not required to be a part of the Sustained Yield calculations.

Annual Sustained Yield on State forestry-classified lands

Management Unit	Acres	Volume (CCF)
Kantishna	3,050	55,405
Fairbanks	4,606	85,065
Delta	3,948	72,653
Tok	2,370	30,948
TOTAL	13,974	244,072

Reforestation

Reforestation is completed through sale design which promotes natural seeding through adequate scarification techniques, seed tree sources, protection of existing saplings and pole timber during harvest operations, and if necessary, planting of seedlings. Coppice regeneration with aspen and

birch is the expected and predominant first regeneration of many of the sale areas. Sale areas generally reforest to a mixed stand of white spruce, birch, aspen and poplar, and DOF monitors reforestation through site visits and regeneration surveys. Reforestation efforts have been successful in multiple areas of the State Forest. All details of the regeneration methods used will be covered in detail in the Preliminary Best Interest Finding (PBIF) and Forest Land Use Plan (FLUP) process.

The law, AS 41.17.220 – 230, requires DOF to develop a management plan for the Tanana Valley State Forest. The management plan guides many of DOF's management actions. The FYSTS is consistent with the guidelines and direction established in the TVSF Management Plan. Some of the sales may be for areas outside of the boundaries of the TVSF and are proposed on state owned forestry classified lands; these sales are consistent with the YTAP and ETAP and other state land management plans. Together the TVSF Management Plan, the YTAP, and the ETAP are available for review at the Fairbanks, Delta or Tok Area Offices.

Schedule Review Process

The Review Draft Five-Year Schedule of Timber Sales is submitted for review and comment to several State agencies. Comments about specific timber sales from Alaska Department of Fish and Game – Habitat Division, Alaska Division of Mining, Land and Water, Alaska Department of Environmental Conservation and other agencies are used to draft a FLUP and PBIF for timber sales in years one and two (AS 38.05.112). The FLUP and PBIF gives site specific information for each sale describing the location, estimated timber volume, harvest methods, reforestation plan, access, and other potential uses of the sale area. Before any commercial timber sale of ten acres or larger is offered, DOF prepares a FLUP and PBIF and makes a finding that the sale is in the State's best interest. The schedule followed by individual FLUPs and PBIF is then distributed for review by the public. Public comments are considered, and revisions made as appropriate before the schedule is adopted. Sales where the FLUPs and PBIF have been previously reviewed by the public and agencies are noted on the schedule. Sales that have been reviewed and are currently available over the counter are also listed.

Public & Agency review periods run concurrently from July 19, 2024, to 4:30pm AKDT, Friday, August 23, 2024.

Individual Sale Maps *All Areas*

Every individual sale on the proposed Five-Year Schedule of Timber Sales (FYSTS) can be viewed in greater geographic detail on DOF’s dynamic web-based viewer. Using the web map, interested parties may view any sale in many different contexts (i.e., at any scale; with other layers of interest such as historical sales, ownerships, or fire perimeters; with imagery vs topographic Basemaps, etc.), on any internet-enabled device, and may even download custom map views for offline use.

Providing this interactive and scalable viewing method to the public allows DOF to better meet the intent of the [FYSTS Statute](#) (AS 38.05.113) which reads in part: *“the department shall prepare a five-year schedule of timber sales planned on all land managed by the department. The timber sale schedule must provide a time line that identifies timber sales, their volumes, and their locations and must contain sufficient information to provide the public and the forest products industry with a basis to comment on proposed sale offerings.”*

Interested parties can always contact DOF for assistance with obtaining necessary information to understand, interpret, and/or provide comment on the proposed Five-Year Schedule.

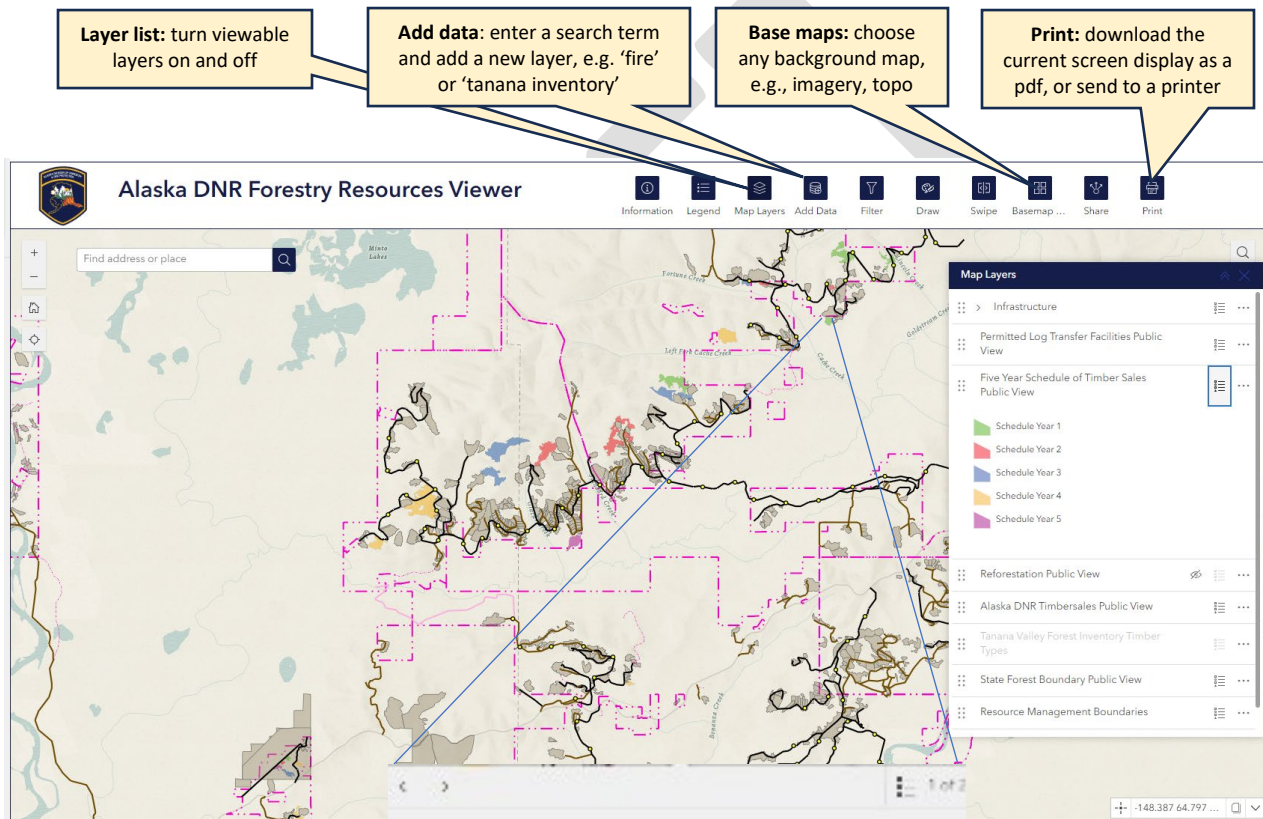
Individual sales proposed on the 2024 Fairbanks-Delta FYSTS may be viewed at the [Alaska DNR Forestry Resources Viewer](#) (also scan QR code below, or search in web browser). All sales will be symbolized by year in the layer ‘Five Year Schedule of Timber Sales Public View’ (searchable as ‘FYSTS Public View’, and included as a default layer in the Resources Viewer).

Alaska DNR Forestry Resources Viewer:



Alaska DNR Forestry Resources Viewer – FYSTS Public View Guide

- 1) Open a web browser on any internet-connected device. The web map interface is nearly identical on desktop or mobile (iOS or Android) devices.
- 2) Open the Alaska DNR Forestry Resources Viewer at <https://experience.arcgis.com/experience/82e11f6660d34b568319643cadee80ab>, or by typing ‘alaska forestry resources viewer’ or similar into your web browser’s search bar.
- 3) Zoom into sale or area of interest. Note the layer ‘FYSTS Public View’ is displayed by default, but is not visible until zooming past a scale of 1:1,200,000



Individual items (e.g., sales) on the map may be selected simply by clicking on them. In the case where more than 1 layer is present at the selected point, press the arrow icon (► upper right) to view all data associated with the specific layer.

Five Year Schedule of Sales	
Sale Number	NC 1984-F
Sale Name	Casho Point Mixed
FYSTS Year	1
proposed year	2024
Management (Stock)	Fairbanks
acres	25.68
Species 1	WhiteSpruce

**FY2024-2028 FAIRBANKS AREA
INDIVIDUAL TIMBER HARVEST SCHEDULE
(INCLUDES GALENA VICINITY SALES)**

2024-2028 Five Year Schedule of Timber Sales

DOF – Fairbanks-Delta

Fairbanks

Northern Region

STATE OF ALASKA
DEPARTMENT OF NATURAL RESOURCES
DIVISION OF FORESTRY
TIMBER HARVEST SCHEDULE

Year 1 of 5

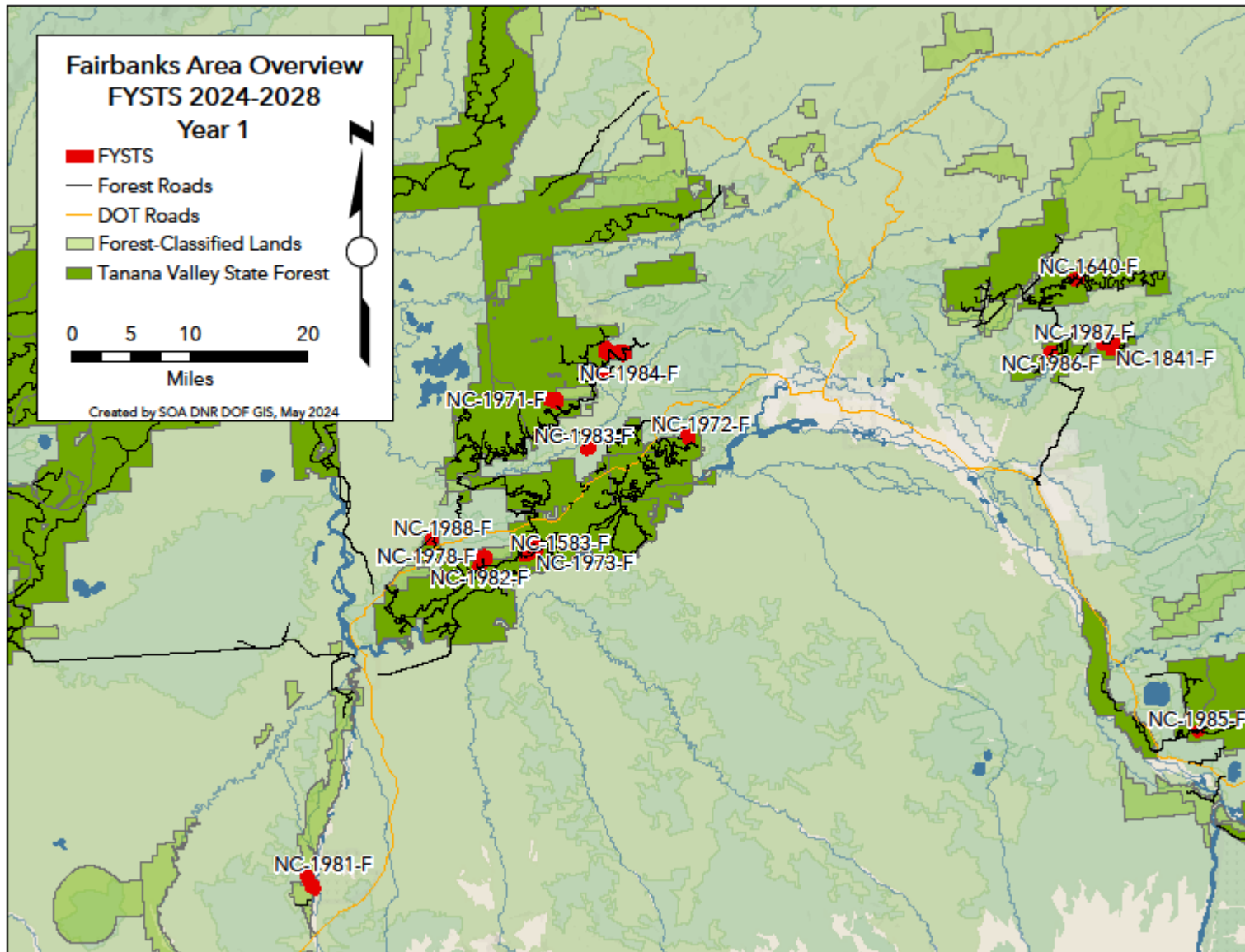
July 1, 2024 to June 30, 2025

of Sales 20
Total Acres 902.0
Spruce Sawlog (MBF) 3,443
Fuelwood (Cords) 10,833

FYSTS Year	Sale Number	Units	Sale Name	Legal Description	Acres	Species	Product	Volume*	Land Manager	Area Plan	Management Unit	Remarks
1	NC-1583-F	1	Loop Birch #2	Sections 8 T3S, R5W	39.5	Birch	Fuel	747	DOF	TVSF	5A	Nenana Ridge Rd
1	NC-1640-F	2	Flat Creek #1	Sections 4, 9, 10, 16, T1N,	40.5	Birch White Spruce	Fuel Sawlog	540 79	DOF	TVSF	6	Two Rivers Rd
1	NC-1841-F	2	Chena Islands Spruce	Sections 1, 2, & 11, T1S, R4E	76.3	White Spruce Birch	Sawlog Fuel	771 306	DOF	TVSF	6	Pleasant Valley Rd, winter only
1	NC-1971-F-1	1	Aurora Energy Long-Term	Sections 23-24, T1N, R4W	31.8	Birch	Fuel	530	DOF	TVSF	4C	Cache Ck Rd
1	NC-1971-F-2	1	Aurora Energy Long-Term	Section 24, T1N, R4W	15.7	Birch	Fuel	260	DOF	TVSF	4C	Cache Ck Rd
1	NC-1971-F-3	1	Aurora Energy Long-Term	Section 23, T1N, R4W	19.9	Birch	Fuel	331	DOF	TVSF	4C	Cache Ck Rd
1	NC-1971-F-4	1	Aurora Energy Long-Term	Sections 15, 22, & 23, R1N, T4W	95.8	Birch	Fuel	1597	DOF	TVSF	4C	Cache Ck Rd
1	NC-1971-F-5	1	Aurora Energy Long-Term	Sections 1, 2, 11, & 12, T1S,	129.0	Birch	Fuel	2149	DMLW DOF	ETAP TVSF	F-37 4C	Standard East Rd
1	NC-1972-F-1	1	Jack Frost Log Works Long Term	Sections 26, 27, 34, & 35, T1S,	51.0	White Spruce	Sawlog	597	DOF	TVSF	5A	Rosie Creek Rd
1	NC-1973-F-1	1	Alaska Birch Works Long Term	Sections 8-9, T3S, R5W	128.3	Birch	Fuel	2702	DOF	TVSF	5A	Nenana Ridge Rd
1	NC-1978-F	1	Underwear Ridge Spruce	Section 10, T3S, R6W	81.6	White Spruce White Spruce	Sawlog Fuel	768 547	DMLW	YTAP	P-03	Nenana Ridge Rd
1	NC-1981-F	2	Beyond Clear Spruce	Section 26, T7S, R9W	72.5	White Spruce	Sawlog	510	DMLW	YTAP	P-48	Anderson area, winter only
1	NC-1982-F	1	Nenana Ridge 11 Mile Birch	Section 15, T3S, R6W	27.6	Birch	Fuel	613	DOF	TVSF	5A	Nenana Ridge Rd
1	NC-1983-F	1	Standard Ck 6 Mile Spruce #3	Section 32, T1S, R4W	30.7	White Spruce White Spruce	Sawlog Fuel	96 204	DMLW DOF	ETAP TVSF	F-36 5A	Standard Ck Rd
1	NC-1984-F	1	Cache Point Mixed	Section 34, T1N, R4W	25.7	White Spruce Birch	Sawlog Fuel	150 142	DMLW	ETAP	F-20	Cache Ck Rd
1	NC-1985-F	1	Mosquito 5 Mile Mixed	Sections 27-28, T6S, R5E	6.7	White Spruce White Spruce	Sawlog Fuel	26 37	DOF	TVSF	7B	Mosquito Ck Rd / Rich Hwy MP 314
1	NC-1986-F	1	Jenny M Hill Spruce #2	Section 1, T1S, R3E	12.5	White Spruce	Sawlog	98	DOF	TVSF	6	Pheasant Farm Rd
1	NC-1987-F	1	Pleasant Valley Spruce	Section 2, T1S, R4E	5.8	White Spruce Birch	Sawlog Fuel	39 29	DOF	TVSF	6	Pleasant Valley Rd, winter only
1	NC-1988-F	1	Little Ag Mixed #2	Section 36, T2S, R7W	11.2	White Spruce Mixed	Sawlog Fuel	65 100	DOF	TVSF	5A	Little Ag Rd / Parks Hwy MP 317

*all volumes converted from CCF (100 cubic feet). Sawlog Volume: MBF (1,000 board-feet) = 1 CCF * 0.39. Fuelwood Volume: Cords = 1 CCF / 0.9

2024-2028 Five Year Schedule of Timber Sales
DOF – Fairbanks-Delta



2024-2028 Five Year Schedule of Timber Sales

DOF – Fairbanks-Delta

Fairbanks

Northern Region

STATE OF ALASKA
DEPARTMENT OF NATURAL RESOURCES

DIVISION OF FORESTRY
TIMBER HARVEST SCHEDULE

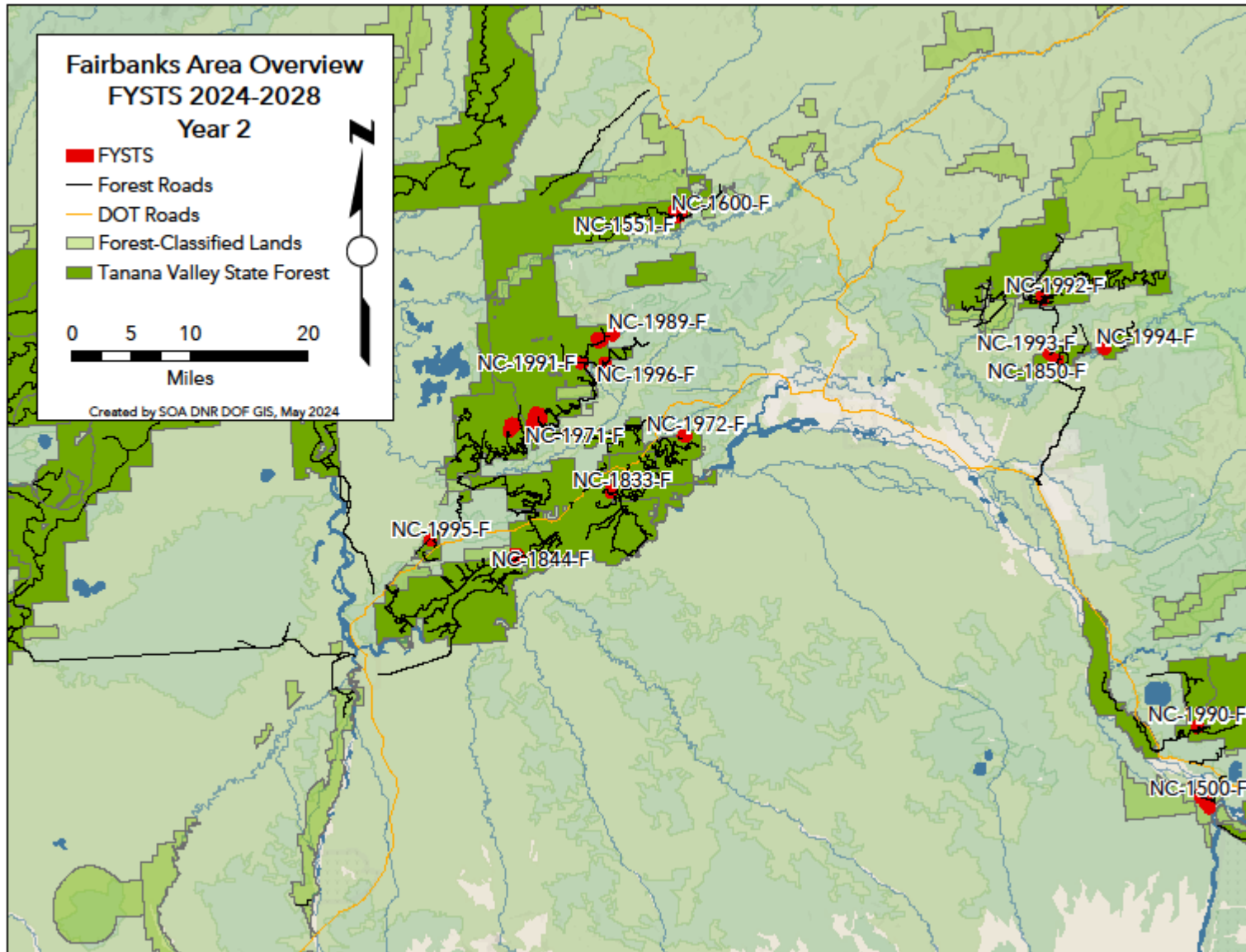
Year 2 of 5

July 1, 2025 to June 30, 2026

of Sales 22
Total Acres 3,254.5
Spruce Sawlog (MBF) 4,003
Fuelwood (Cords) 68,268

FYSTS Year	Sale Number	Units	Sale Name	Legal Description	Acres	Species	Product	Volume*	Land Manager	Area Plan	Management Unit	Remarks
2	NC-1443-F	1	Canyon Spruce South	Sections 22, 23, T7S, R6E	68.8	White Spruce	Sawlog	975	DOF	TVSF	7B	Tower Rd / Richardson Hwy MP 302
2	NC-1500-F	3	Stan The Mule Man	Sections 21, 28, T7S, R5E	115.0	White Spruce	Sawlog	507	DMLW	YTAP	P-41	Birch Lake area, winter only
2	NC-1551-F	3	Hastings Spruce #1	Sections 23, 24, 25, 26, T3N, R3W	77.3	White Spruce	Sawlog	501	DOF	TVSF	4A	Elliot Hwy, winter only
2	NC-1600-F	1	Hastings Salvage Spruce #2	Section 26, T3N,R3W	25.7	White Spruce	Fuel	139	DOF	TVSF	4A	Elliot Hwy, burned 2011, winter only
2	NC-1631-F	48	Yukon Crossing	Sections 3-4,7-11,14-17,20-21,T8S,R9E	2,254.3	Mixed	Fuel	58507	DMLW	none	CL NC-16-001	Galena Biomass Sale
2	NC-1833-F	1	Bonanza Birch #1	Section 16, 21, T2S, R4W	21.7	Birch	Fuel	432	DOF	TVSF	5A	Bonanza Creek Rd, access through UAF Research Area
2	NC-1844-F	1	Get Bent #3	Sections 7, 18, T3S, R5W	72.3	White Spruce Birch	Sawlog Fuel	315 897	DOF	TVSF	5A	Nenana Ridge Rd
2	NC-1850-F	1	Mullen Floodplain Birch	Section 7, T1S, R4E; Section 12, T1S, R3E	14.6	Birch	Fuel	264	DOF	TVSF	6	Mosquito Creek Rd / Richardson Hwy MP 314
2	NC-1971-F-10	1	Aurora Energy Long-Term	Section 19, T1S, R5W	125.2	Birch	Fuel	2087	DOF	TVSF	4D	Standard Ck Rd
2	NC-1971-F-7	1	Aurora Energy Long-Term	Section 15, T1S, R5W	26.3	Birch	Fuel	437	DOF	TVSF	4C	Standard Ck Rd
2	NC-1971-F-8	1	Aurora Energy Long-Term	Section 16, T1S, R5W	134.8	Birch	Fuel	2246	DOF	TVSF	4C	Standard Ck Rd
2	NC-1971-F-9	1	Aurora Energy Long-Term	Sections 10 & 15, T1S, R5W	49.9	Birch	Fuel	832	DOF	TVSF	4C	Standard Ck Rd
2	NC-1972-F-2	1	Jack Frost Log Works Long Term	Section 27, T1S, R3W	28.5	White Spruce	Sawlog	328	DOF	TVSF	5A	Rosie Creek Rd
2	NC-1989-F	3	Keystone Ck Mixed	Sections 11 & 15, T1N, R4W	115.4	White Spruce Birch	Sawlog Fuel	774 973	DOF	TVSF	4C	Cache Ck Rd
2	NC-1990-F	1	Mosquito 5 Mile Spruce	Section 21, T6S, R5E	22.2	White Spruce White Spruce	Sawlog Fuel	87 123	DOF	TVSF	7B	Mosquito Ck Rd / Rich Hwy MP 314
2	NC-1991-F	1	Fortune Creek Mixed #1	Section 29, T1N, R4W	14.6	Birch White Spruce	Fuel Sawlog	194 28	DMLW	ETAP	F-20	Cache Ck Rd
2	NC-1992-F	1	Two Rivers 5 Mile Birch	Sections 13-14, T1N, R3E	46.5	Birch	Fuel	827	DOF	TVSF	6	Two Rivers Rd
2	NC-1993-F	1	Jenny M Hill Spruce #3	Section 12, T1S, R3E	7.1	White Spruce	Sawlog	55	DOF	TVSF	6	Pheasant Farm Rd
2	NC-1994-F	1	Pleasant Valley Spruce #2	Sections 2 & 11, T1S, R4E	17.9	White Spruce	Sawlog	124 89	DOF	TVSF	6	Pleasant Valley Rd, winter only
2	NC-1995-F	1	Little Ag Spruce #2	Section 36, T2S, R7W & Section 1, T3S, R7W	6.1	White Spruce White Spruce	Sawlog Fuel	24 54	DOF	TVSF	5A	Little Ag Rd / Parks Hwy MP 317
2	NC-1996-F	1	Cache 8 Mile Birch	Section 27, T1N, R4W	10.1	Birch	Fuel	167	DOF	TVSF	4C	Cache Ck Rd

*all volumes converted from CCF (100 cubic feet). Sawlog Volume: MBF (1,000 board-feet) = 1 CCF * 0.39. Fuelwood Volume: Cords = 1 CCF / 0.9



**Note Galena sale NC-1631-F Yukon Crossina not displayed on this overview map*

2024-2028 Five Year Schedule of Timber Sales
DOF – Fairbanks-Delta

Fairbanks
Northern Region

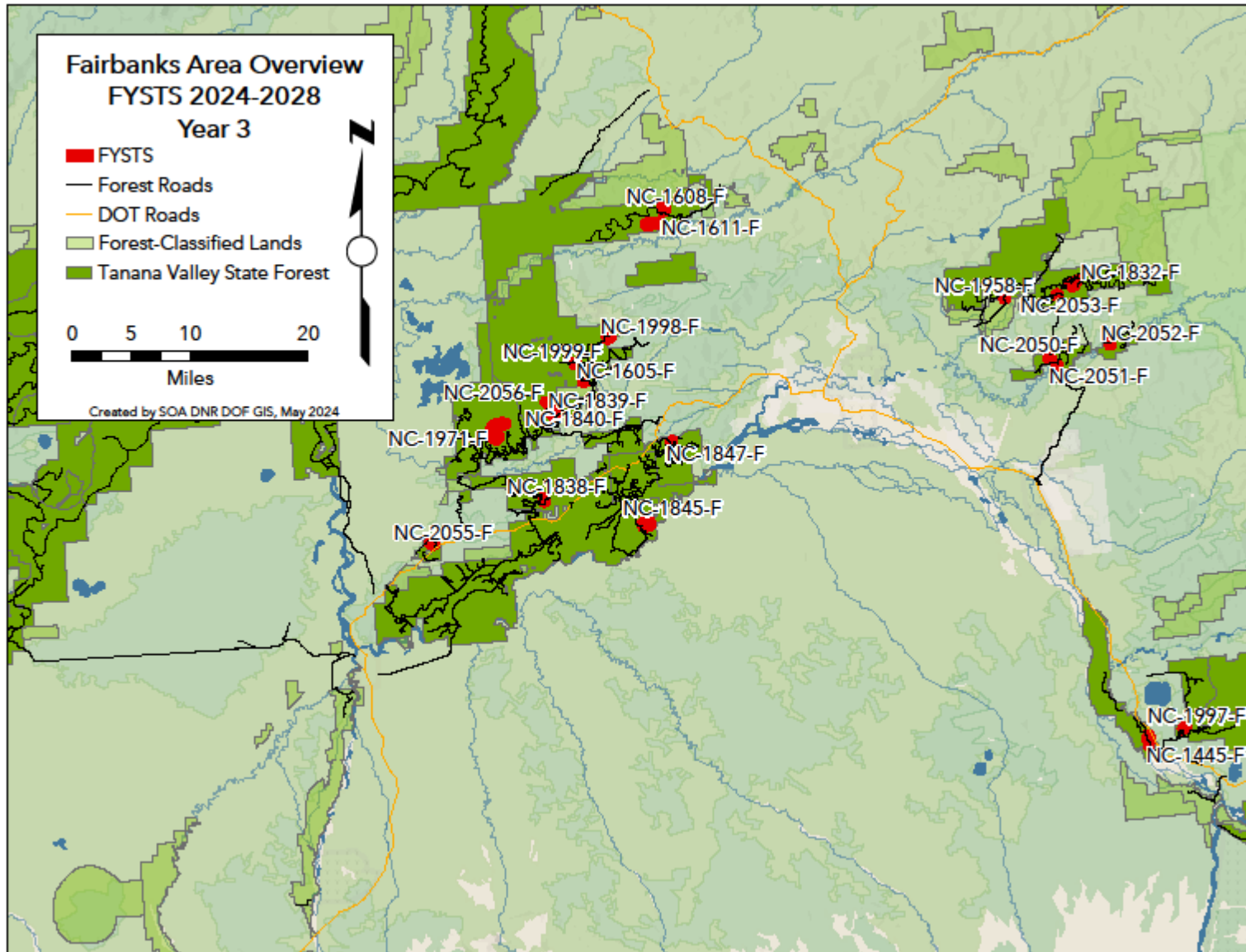
STATE OF ALASKA
DEPARTMENT OF NATURAL RESOURCES
DIVISION OF FORESTRY
TIMBER HARVEST SCHEDULE
Year 3 of 5
July 1, 2026 to June 30, 2027

of Sales 24
Total Acres 1,791.4
Spruce Sawlog (MBF) 4,186
Fuelwood (Cords) 24,093

FYSTS Year	Sale Number	Units	Sale Name	Legal Description	Acres	Species	Product	Volume *	Land Manager	Area Plan	Management Unit	Remarks
3	NC-1445-F	1	Middle Midway Spruce	Section 23, 26, T6S, R4E	70.1	White Spruce	Sawlog	468	DOF	TVSF	7A	Salcha area / Richardson Hwy MP 314, winter only
3	NC-1605-F	1	Left Fork Birch #1 Re-sale	Section 32, T1N, R4W	15.7	Birch White Spruce	Fuel Fuel	67 67	DOF	TVSF	4C	Cache Ck Rd
3	NC-1607-F	16	Serpentine #1	Sections 4-6, 22, 23, 26, & 35, T8S, R9E	631.8	Mixed	Fuel	13971	DMLW	YTAP	P-41	Galena Biomass Sale
3	NC-1608-F	1	Hastings Salvage # 3	Section 22, T3N, R3W	56.8	White Spruce	Fuel	317	DOF	TVSF	4A	Elliot Hwy, winter only
3	NC-1611-F	1	Hastings Salvage #4	Sections 27, 28, T3N, R3W	121.4	White Spruce	Fuel	1349	DOF	TVSF	4A	Elliot Hwy, winter only
3	NC-1832-F	1	Flat Birch #2	Sections 8, 9, T1N, R4E	67.2	Birch	Fuel	516	DOF	TVSF	6	Two Rivers Rd
3	NC-1838-F	1	Skinny's North Mixed	Section 22, T2S, R5W	38.9	White Spruce Birch	Sawlog Fuel	268 190	DOF	TVSF	5A	Skinny's Rd
3	NC-1839-F	1	Spencer Creek Spruce #1	Sections 11, 14, T1S, R5W	36.3	White Spruce	Sawlog	246	DOF	TVSF	4C	Standard East Rd
3	NC-1840-F	1	Spencer Creek Spruce #2	Section 14, T1S, R5W	7.8	White Spruce	Sawlog	47	DOF	TVSF	4C	Standard East Rd
3	NC-1845-F	1	7 Mile Island North Spruce	Section 36, T2S, R4W; Section 1, T3S, R4W	135.6	White Spruce	Sawlog	1248	DOF	TVSF	5A	Bonanza Creek Rd, winter only
3	NC-1847-F	1	Pagh Road Spruce #3	Section 33, T1S, R3W	15.5	White Spruce	Sawlog	146	DOF	TVSF	5A	Rosie Creek Rd
3	NC-1958-F	1	Little Chena Spruce	Section 8, T1N, R3E	6.8	White Spruce	Sawlog	53	DOF	TVSF	6	Chena Hot Springs Rd MP 11, winter only
3	NC-1971-F-11	1	Aurora Energy Long-Term	Sections 13 & 24, T1S, R6W and Section 18, T1S, R5W	219.6	Birch	Fuel	3660	DOF	TVSF	4D	Standard Ck Rd
3	NC-1971-F-12	1	Aurora Energy Long-Term	Section 24, T1S, R6W	109.9	Birch	Fuel	1830	DOF	TVSF	4D	Standard Ck Rd
3	NC-1997-F	1	Mosquito Valley Spruce	Section 20, T6S, R5E	19.1	White Spruce	Sawlog	186	DOF	TVSF	7B	Mosquito Ck Rd
3	NC-1998-F	1	Keystone's End Spruce	Sections 14-15, T1N, R4W	26.9	White Spruce	Sawlog	157	DMLW/ DOF	ETAP/ TVSF	F-17/4C	Mosquito Ck Rd / Rich Hwy MP 314
3	NC-1999-F	1	Fortune Creek Mixed #2	Section 29, T1N, R4W	18.6	Birch White Spruce	Fuel Sawlog	248 36	DOF	TVSF	4C	Cache Ck Rd
3	NC-2050-F	1	Jenny M Hill Spruce #4	Section 12, T1S, R3E	18.9	White Spruce	Sawlog	184	DOF	TVSF	6	Pheasant Farm Rd
3	NC-2051-F	1	Mullen Floodplain Birch #2	Section 13, T1S, R3E	13.5	Birch	Fuel	244	DOF	TVSF	6	Pheasant Farm Rd
3	NC-2052-F	1	Chena Island Spruce #2	Section 2, T1S, R4E	11.2	White Spruce	Sawlog	129	DOF	TVSF	6	Pleasant Valley Rd, winter only
3	NC-2053-F	1	Two Rivers Ridge Birch	Section 18, T1N, R4E	10.0	Birch	Fuel	166	DOF	TVSF	6	Two Rivers Rd
3	NC-2055-F	1	Little Ag Mixed #3	Section 1, T3S, R7W	25.4	White Spruce Birch	Sawlog Fuel	50 199	DOF	TVSF	5A	Little Ag Rd / Parks Hwy MP 317
3	NC-2056-F	2	Kari Creek Mixed	Section 11, T1S, R5W	114.5	White Spruce Birch	Sawlog Fuel	669 1271	DOF	TVSF	4C	Standard East Rd

*all volumes converted from CCF (100 cubic feet). Sawlog Volume: MBF (1,000 board-feet) = 1 CCF * 0.39. Fuelwood Volume: Cords = 1 CCF / 0.9

2024-2028 Five Year Schedule of Timber Sales
DOF – Fairbanks-Delta



**Note Galena sale NC-1607-F Serpentine #1 not displayed on this overview map*

2024-2028 Five Year Schedule of Timber Sales

DOF – Fairbanks-Delta

Fairbanks

Northern Region

STATE OF ALASKA
DEPARTMENT OF NATURAL RESOURCES
DIVISION OF FORESTRY
TIMBER HARVEST SCHEDULE

Year 4 of 5

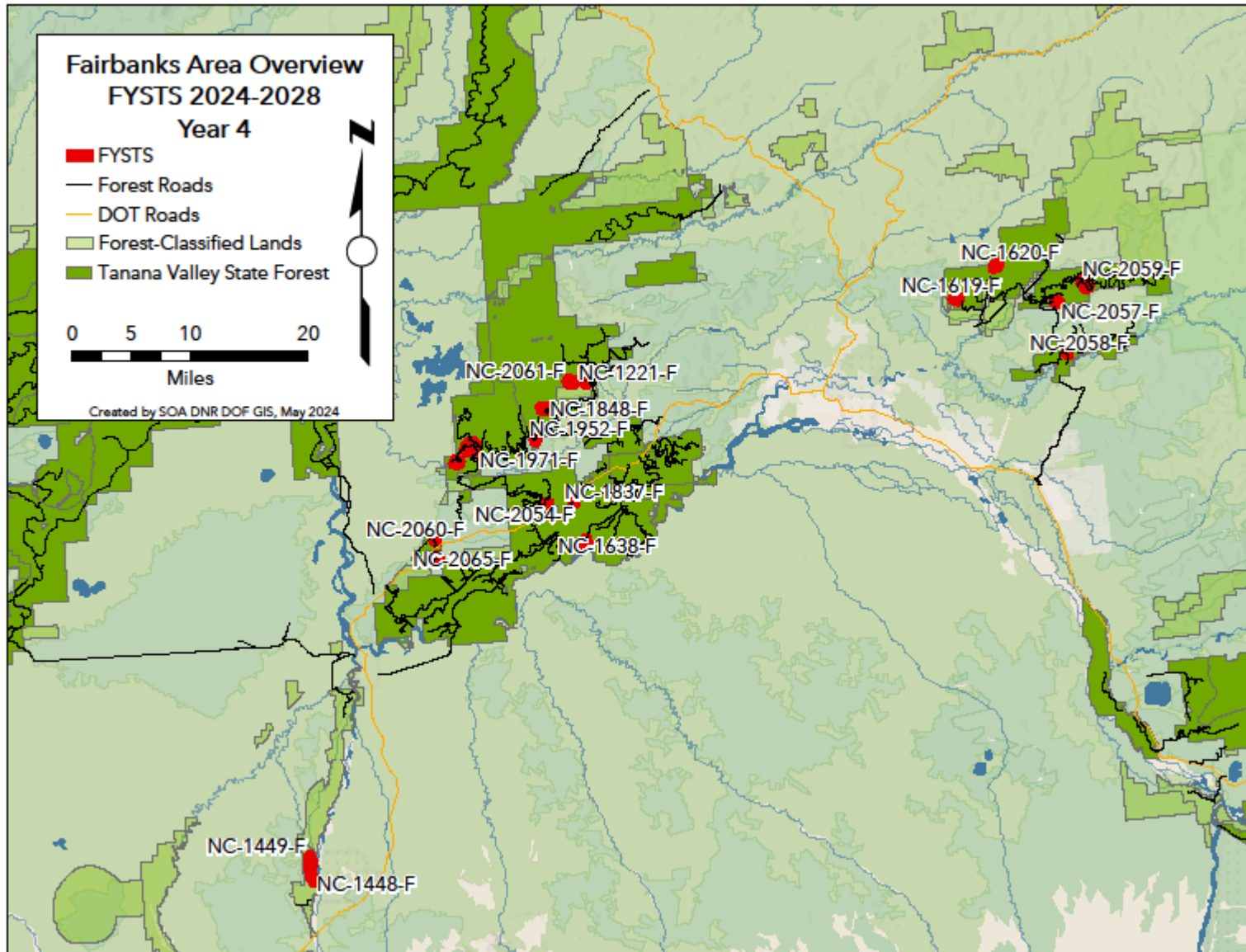
July 1, 2027 to June 30, 2028

of Sales 19
Total Acres 1,183.7
Spruce Sawlog (MBF) 4,699
Fuelwood (Cords) 10,487

FYSTS	Sale Number	Units	Sale Name	Legal Description	Acres	Species	Product	Volume*	Land Manager	Area Plan	Management Unit	Remarks
4	NC-1221-F	1	Left Fork Birch #2	Section 32, T1N, R4W	13.6	Birch	Fuel	144	DOF	TVSF	4C	Cache Creek Rd
4	NC-1448-F	1	Early Warning Spruce	Section 23, T7S, R9W	44.2	White Spruce	Sawlog	312	DMLW	YTAP	P-48	Anderson area, winter only
4	NC-1449-F	1	Early Spruce	Sections 14, 23, T7S, R9W	140.2	White Spruce	Sawlog	156	DMLW	YTAP	P-48	Anderson area, winter only
4	NC-1619-F	1	Iowa Creek West Spruce	Sections 10,11 T1N, R2E	59.2	White Spruce	Sawlog	667	DOF	TVSF	6	Chena Hot Springs Rd MP 11, winter only
4	NC-1620-F	1	Iowa Creek North	Section 29,32 T2N, R3E	54.0	White Spruce Birch	Sawlog Fuel	337 360	DOF	TVSF	6	Chena Hot Springs Rd MP 11, winter only
4	NC-1638-F	1	Bonanza Creek Spruce South	Sections 6, 7, T3S, R4W	47.9	White Spruce	Sawlog	588	DOF	TVSF	5A	Bonanza Creek Rd
4	NC-1837-F	1	Parks Hwy 332 Spruce	Section 24, T2S, R5W	9.6	White Spruce	Sawlog	98	DOF	TVSF	5A	Parks Hwy MP 332
4	NC-1848-F	1	Spencer Creek Mixed #1	Section 10, T1S, R5W	73.7	White Spruce Birch	Sawlog Fuel	428 610	DOF	TVSF	4C	Standard East Rd
4	NC-1952-F	1	Standard Creek 12 Mile Mixed	Section 28, T1S, R5W	11.4	White Spruce Birch	Sawlog Fuel	35 51	DOF	TVSF	4C/4D	Standard Creek Rd
4	NC-1971-F-13	1	Aurora Energy Long-Term	Sections 22, 27, & 28, T1S, R6W	339.9	Birch	Fuel	5664	DOF	TVSF	4D	Standard Ck Rd
4	NC-1971-F-14	1	Aurora Energy Long-Term	Sections 32-33, T1S, R6W	69.6	Birch	Fuel	1160	DOF	TVSF	4D	Standard Ck Rd
4	NC-2054-F	1	Skinny's Hogback Spruce	Section 22, T2S, R5W	12.0	White Spruce	Sawlog	70	DOF	TVSF	5A	Skinny's Rd
4	NC-2057-F	1	Two Rivers 3 Mile Birch #2	Section 18, T1N, R4E	39.3	Birch	Fuel	873	DOF	TVSF	6	Two Rivers Rd
4	NC-2058-F	1	Mullen Floodplain Birch	Sections 7-8, T1S, R4E	11.4	Birch	Fuel	152	DOF	TVSF	6	Pheasant Farm Rd, winter only
4	NC-2059-F	2	Headwaters Mixed	Sections 9-10, T1N, R4E	98.4	Birch White Spruce	Fuel Sawlog	1092 383	DOF	TVSF	6	Two Rivers Rd
4	NC-2060-F	1	Little Ag Birch	Section 1, T3S, R7W and Section 36, T2S, R7W	14.1	Birch	Fuel	234	DOF	TVSF	5A	Little Ag Rd / Parks Hwy MP 317
4	NC-2061-F	1	Left Fork Creek Spruce #2	Section 31, T1N, R4W	112.7	White Spruce 18	Sawlog	1098	DOF	TVSF	4C	Cache Ck Rd
4	NC-2065-F	1	Little Goldstream	Section 12, T3S, R7W	32.5	White Spruce White Spruce	Sawlog Fuel	190 144	DOF	TVSF	5A	Little Ag Rd / Parks Hwy MP 317

*all volumes converted from CCF (100 cubic feet). Sawlog Volume: MBF (1,000 board-feet) = 1 CCF * 0.39. Fuelwood Volume: Cords = 1 CCF / 0.9

2024-2028 Five Year Schedule of Timber Sales
DOF – Fairbanks-Delta



2024-2028 Five Year Schedule of Timber Sales

DOF – Fairbanks-Delta

Fairbanks
Northern Region

STATE OF ALASKA
DEPARTMENT OF NATURAL RESOURCES
DIVISION OF FORESTRY
TIMBER HARVEST SCHEDULE

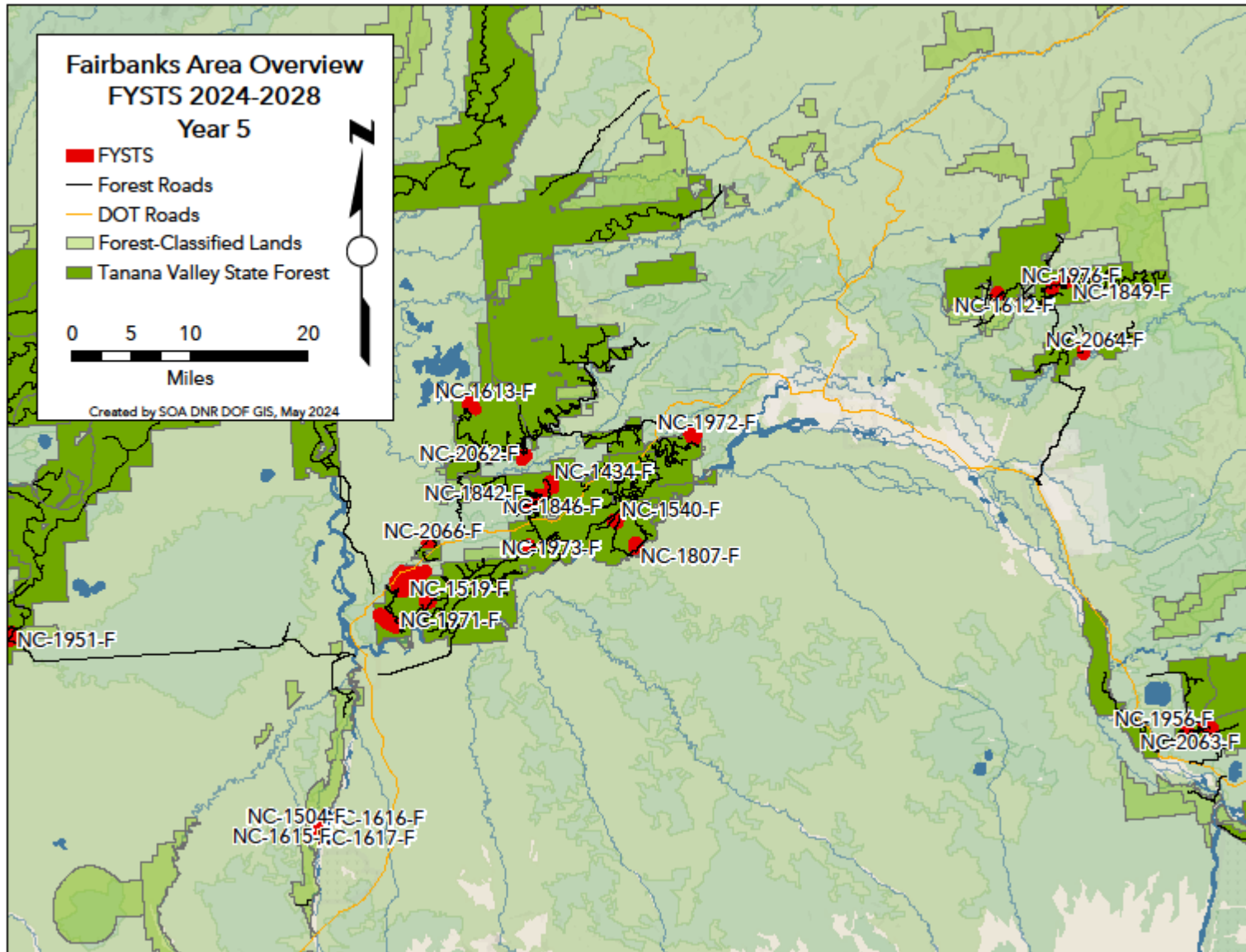
Year 5 of 5
July 1, 2028 to June 30, 2029

of Sales 26
Total Acres 2,654.9
Spruce Sawlog (MBF) 8,794
Fuelwood (Cords) 31,292

FYSTS Year	Sale Number	Units	Sale Name	Legal Description	Acres	Species	Product	Volume*	Land Manager	Area Plan	Management Unit	Remarks
5	NC-1434-F	1	Halfbirch	Sections 10, 11, 14, 15, T2S, R5W	108.2	Birch	Fuel	1222	DOF	TVSF	5A	Skinny's Rd
5	NC-1504-F	1	Anderson Spruce #2	Sections 25, 36, T6S, R9W	15.9	White Spruce	Sawlog	176	DMLW	YTAP	P-48	Anderson area, winter only
5	NC-1519-F	1	Nenana Ridge Hab #3	Sections 26, 35, T3S, R7W	99.3	Birch	Fuel	1650	DOF	TVSF	5A	Nenana Ridge Rd
5	NC-1540-F	1	Bonanza Aspen	Sections 33, 34, T2S, R4W	79.9	Aspen	Fuel	1500	DOF	TVSF	5A	Bonanza Creek Rd
5	NC-1612-F	1	Iowa Creek East Mixed	Section 8 T1N, R3E	39.3	White Spruce Birch	Sawlog Fuel	250 267	DOF	TVSF	6	Chena Hot Springs Road Mile 11, winter only
5	NC-1613-F	1	Section House Spruce #2	Sections 3,10 T1S, R6W	118.7	White Spruce	Sawlog	1193	DOF	TVSF	4D	Standard Ck Rd
5	NC-1615-F	1	Anderson Spruce #3	Sections 25, 36, T6S, R9W	33.3	White Spruce	Sawlog	303	DMLW	YTAP	P-48	Anderson area, winter only
5	NC-1616-F	1	Anderson Spruce #4	Sections 25, 36, T6S, R9W	43.0	White Spruce	Sawlog	393	DMLW	YTAP	P-48	Anderson area, winter only
5	NC-1617-F	2	Anderson Spruce #5	Sections 25, 36, T6S, R9W	9.1	White Spruce	Sawlog	83	DMLW	YTAP	P-48	Anderson area, winter only
5	NC-1807-F	1	Seven Mile Island #4	Section 11, 14 T3S, R4W	87.2	White Spruce	Sawlog	1070	DOF	TVSF	5A	Bonanza Creek Rd, winter only
5	NC-1842-F	1	Halfspruce #4	Sections 20, 21, T2S, R5W	89.6	White Spruce White Spruce	Sawlog Fuel	790 750	DOF	TVSF	5A	Skinny's Rd
5	NC-1846-F	1	Skinny's Summit Mixed	Sections 15, 16, T2S, R5W	14.4	White Spruce Birch	Sawlog Fuel	63 179	DOF	TVSF	5A	Skinny's Rd
5	NC-1849-F	1	Two Rivers Hillside Birch	Sections 5, 8, T1N, R4E	112.9	Birch White Spruce	Fuel Sawlog	2098 69	DOF	TVSF	6	Two Rivers Rd
5	NC-1951-F	2	Kantishna Spruce	Sections 35, 36, T3S, R13W; Section 2, T4S, R13W	157.4	White Spruce	Sawlog	1849	DOF	TVSF	2A	W of Nenana, winter only
5	NC-1956-F	1	Mosquito Mixed	Sections 20, 21, 28, 29, T6S, R5E	15.7	White Spruce Birch	Sawlog Fuel	55 78	DOF	TVSF	7B	Mosquito Creek Rd / Richrdson Hwy MP 314
5	NC-1957-F	1	Tatalina Ridge Spruce	Section 8, 17, T6N, R4W	43.9	White Spruce Birch	Sawlog Fuel	168 239	DMLW	YTAP	T-50/T-51	Elliot Hwy MP 45
5	NC-1971-F-15	1	Aurora Energy Long-Term	Sections 14-16, 21-23,27, 28, T3S, R7W	977.4	Birch	Fuel	16290	DMLW DOF	ETAP TVSF	P-03 5A	Maisch Rd / Parks Hwy 312
5	NC-1971-F-16	1	Aurora Energy Long-Term	Sections 5, 6, & 8, T4S, R5W and Section 31, T3S, R7W	328.3	Birch	Fuel	5471	DOF	TVSF	5A	Maisch Rd / Parks Hwy 312
5	NC-1972-F-3	1	Jack Frost Log Works Long Term	Sections 26 & 35, T1S, R3W	68.3	White Spruce	Sawlog	796	DOF	TVSF	5A	Rosie Creek Rd
5	NC-1973-F-2	1	Alaska Birch Works Long Term	Section 8, T3S, R5W	24.5	Birch	Fuel	507	DOF	TVSF	5A	Nenana Ridge Rd
5	NC-1976-F	1	Two Rivers 8 Mile Birch	Section 7, T1N, R4E	9.6	Birch	Fuel	164	DOF	TVSF	6	Two Rivers Rd
5	NC-2062-F	1	Glacier Ck East Mixed	Section 32, T1S, R5W	69.2	White Spruce Birch	Sawlog Fuel	269 767	DMLW DOF	ETAP TVSF	F-29 4D	Standard Ck Rd
5	NC-2063-F	3	Mosquito 6 Mile Spruce	Sections 22 & 26, T6S, R5E	76.8	White Spruce	Sawlog	448	DOF	TVSF	7B/7C	Mosquito Ck Rd / Rich Hwy MP 314
5	NC-2064-F	1	Grange Hall Winter Spruce	Section 9, T1S, R4E	20.3	White Spruce	Sawlog	118	DOF	TVSF	6	Grange Hall Rd
5	NC-2066-F	1	Little Ag Spruce #3	Section 1, T3S, R7W	12.7	White Spruce White Spruce	Sawlog Fuel	74 111	DOF	TVSF	5A	Little Ag Rd / Parks Hwy MP 317

*all volumes converted from CCF (100 cubic feet). Sawlog Volume: MBF (1,000 board-feet) = 1 CCF * 0.39. Fuelwood Volume: Cords = 1 CCF / 0.9

2024-2028 Five Year Schedule of Timber Sales
DOF – Fairbanks-Delta



**FY2024-2028 DELTA AREA
INDIVIDUAL TIMBER HARVEST SCHEDULE**

Delta
Northern Region

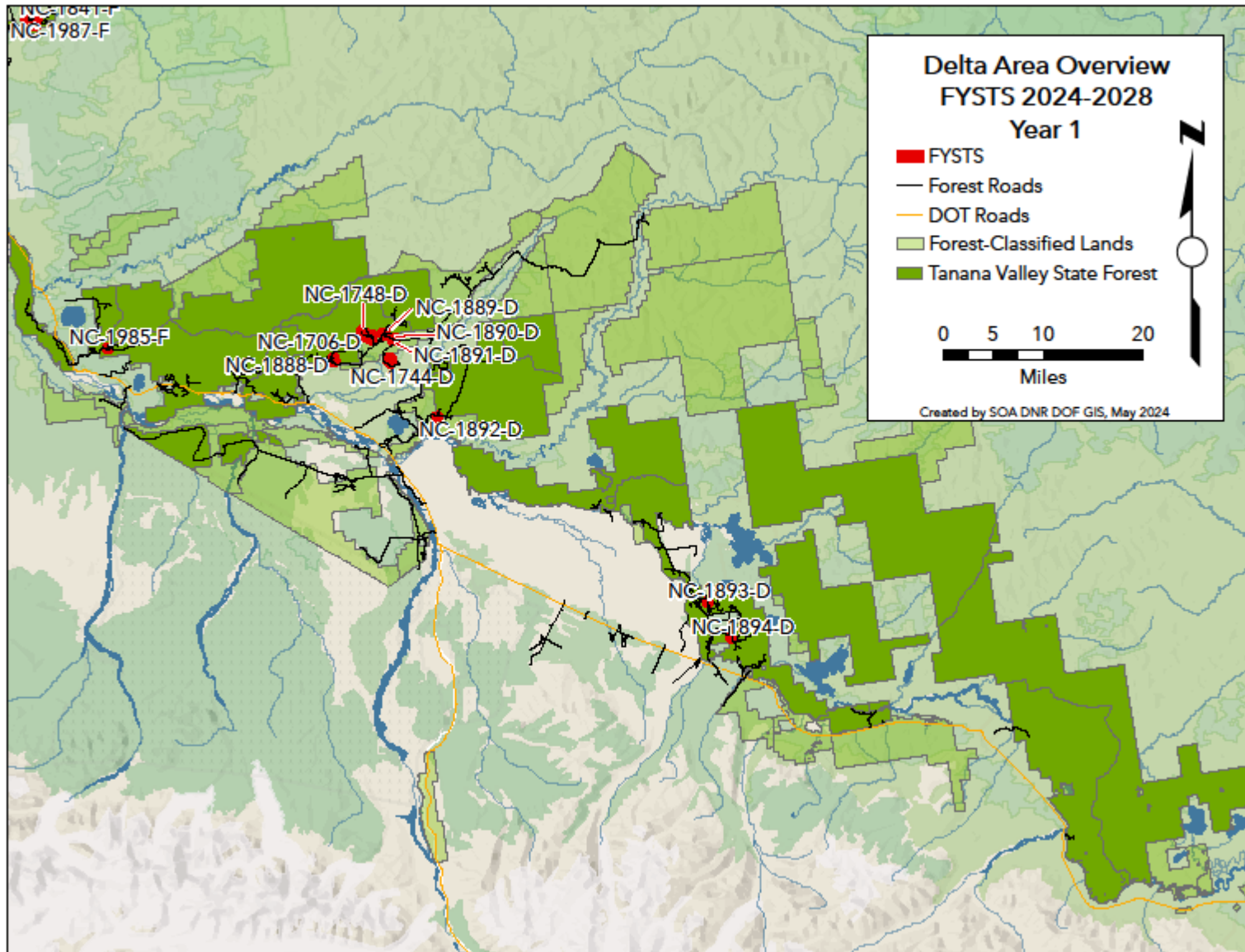
STATE OF ALASKA
DEPARTMENT OF NATURAL RESOURCES
DIVISION OF FORESTRY
TIMBER HARVEST SCHEDULE
Year 1 of 5
July 1, 2024 to June 30, 2025

of Sales 11
Total Acres 234.8
Spruce Sawlog (MBF) 91
Fuelwood (Cords) 1,636

FYSTS Year	Sale Number	Units	Sale Name	Legal Description	Acres	Species	Product	Volume*	Land Manager	Area Plan	Management Unit	Remarks
1	NC-1706-D	1	Rowland #6 Fire Salvage	Section 1, T7S, R9E, Section 36,	34.8	Mixed	Fuel	233	DOF	TVSF	8C	Pogo Rd, burned 2023
1	NC-1744-D	2	Shaw Creek Knob Fire Salvage	Sections 17, 18, T7S, R10E	46.6	Mixed	Fuel	310	DMLW	ETAP	D-11	Pogo Rd, burned 2023, winter only
1	NC-1748-D	1	Rowland #7 Fire Salvage	Section 35, T6S, R9E	48.0	Mixed	Fuel	320	DOF	TVSF	8C	Pogo Rd, burned 2023
1	NC-1888-D	1	Pogo Fire Salvage Mile 6	Sections 8 & 17, T7S R9E	26.3	Mixed	Fuel	176	DMLW DOF	ETAP TVSF	D-10 8C	Pogo Rd, burned 2023
1	NC-1889-D	1	Pinwell Road Fire Salvage #1	Section 31, T6S, R10E, and	24.2	Mixed	Fuel	162	DMLW DOF	ETAP TVSF	D-10 8C	Pogo Rd, burned 2023
1	NC-1890-D	1	Pogo Mile 14 Fire Salvage #1	Section 5, T7S, R10E	25.1	Mixed	Fuel	167	DMLW	ETAP	D-10	Pogo Rd, burned 2023
1	NC-1891-D	1	Pogo Mile 14 Fire Salvage #2	Section 5, T7S, R10E	8.6	Mixed	Fuel	60	DMLW	ETAP	D-10	Pogo Rd, burned 2023
1	NC-1892-D	1	Quartz 8 Mile Mixed #1	Section 13, T8S, R10E	7.9	White Spruce Mixed	Sawlog Fuel	28 79	DOF	TVSF	9A	Quartz Lake Extension Rd
1	NC-1893-D	1	Woodstove Spruce #1	Section 6, T12S, R15E	5.8	White Spruce	Fuel	129	DOF	TVSF	10C	Cummings Rd
1	NC-1894-D	1	Cummings East Spruce #1	Section 28, T12S, R15E	7.3	White Spruce	Sawlog	57	DOF	TVSF	10C	Cummings Rd

*all volumes converted from CCF (100 cubic feet). Sawlog Volume: MBF (1,000 board-feet) = 1 CCF * 0.39. Fuelwood Volume: Cords = 1 CCF / 0.9

2024-2028 Five Year Schedule of Timber Sales
DOF – Fairbanks-Delta



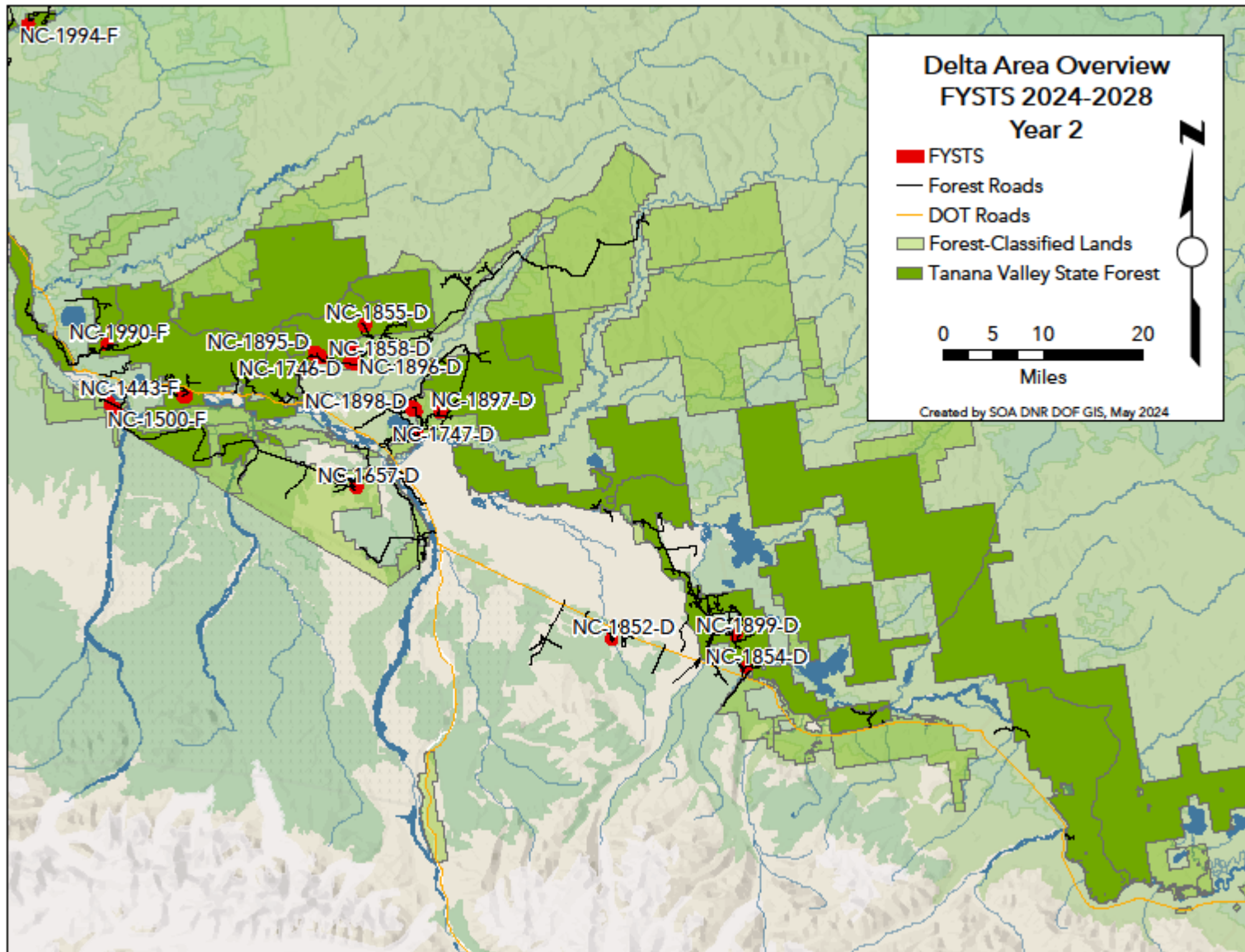
Delta
Northern Region

STATE OF ALASKA
DEPARTMENT OF NATURAL RESOURCES
DIVISION OF FORESTRY
TIMBER HARVEST SCHEDULE
Year 2 of 5
July 1, 2025 to June 30, 2026

of Sales 13
Total Acres 515.9
Spruce Sawlog (MBF) 2,098
Fuelwood (Cords) 2,852

FYSTS Year	Sale Number	Units	Sale Name	Legal Description	Acres	Species	Product	Volume*	Land Manager	Area Plan	Management Unit	Remarks
2	NC-1657-D	1	Twin Ponds Winter Spruce	Section 16, T9S, R9E	18.9	White Spruce Mixed	Sawlog Fuel	59 211	DMLW	ETAP	D21	Delta River West, winter only
2	NC-1746-D	1	Keystone Bluff Fire Salvage #1	Section 12, T7S, R8E	87.6	Mixed	Fuel	487	DOF	TVSF	8C	Pogo Rd, burned 2023
2	NC-1747-D	1	Quartz Extension Mile 3 Birch	Section 28, T8S, R10E	10.2	Birch	Fuel	189	DMLW	ETAP	D-12	Quartz Lake Extension Rd
1	NC-1852-D	1	Sawmill Creek #2 Re-Sale	Sections 16, 21, T12S, R13E	17.8	White Spruce Mixed	Sawlog Fuel	139 32	DFG	DJBR	DJBR	Alcan Hwy MP 1402
2	NC-1854-D	1	Little Gerstle Spruce #2	Section 11, T13S, R15E	8.2	White Spruce	Sawlog	94	DOF	TVSF	10C	Alcan Hwy MP 1389
2	NC-1855-D	1	Rowland #9 Fire Salvage	Section 25, 26, T6S, R9E	23.0	White Spruce	Fuel	483	DOF	TVSF	8C	Pogo Rd, burned 2023
2	NC-1858-D	1	Caribou Creek Spruce #1	Sections 3, 10, T7S, R9E	60.0	White Spruce	Sawlog	579	DOF	TVSF	8C	Pogo Rd, winter only
2	NC-1895-D	1	Keystone Bluff Fire Salvage #2	Sections 1 & 12, T7S, R8E	72.8	Mixed	Fuel	486	DOF	TVSF	8C	Pogo Rd, burned 2023
2	NC-1896-D	1	Pogo Fire Salvage Mile 8.5	Section 15, T7S, R9E	79.1	Mixed	Fuel	527	DMLW DOF	ETAP TVSF	D-10 8C	Pogo Rd, burned 2023
2	NC-1897-D	1	Quartz 8 Mile Mixed #2	Section 13, T8S, R10E	25.7	White Spruce Mixed	Sawlog Fuel	80 286	DOF	TVSF	9A	Quartz Lake Extension Rd
2	NC-1898-D	1	Deuce Spruce	Sections 9-10, T8S, R10E	95.5	White Spruce	Sawlog	931	DMLW	ETAP	D-12	Quartz Lake Extension Rd
2	NC-1899-D	1	Cummings East Mixed #1	Section 28, T12S, R15E	17.2	White Spruce Mixed	Sawlog Fuel	67 152	DOF	TVSF	10C	Cummings Rd

*all volumes converted from CCF (100 cubic feet). Sawlog Volume: MBF (1,000 board-feet) = 1 CCF * 0.39. Fuelwood Volume: Cords = 1 CCF / 0.9



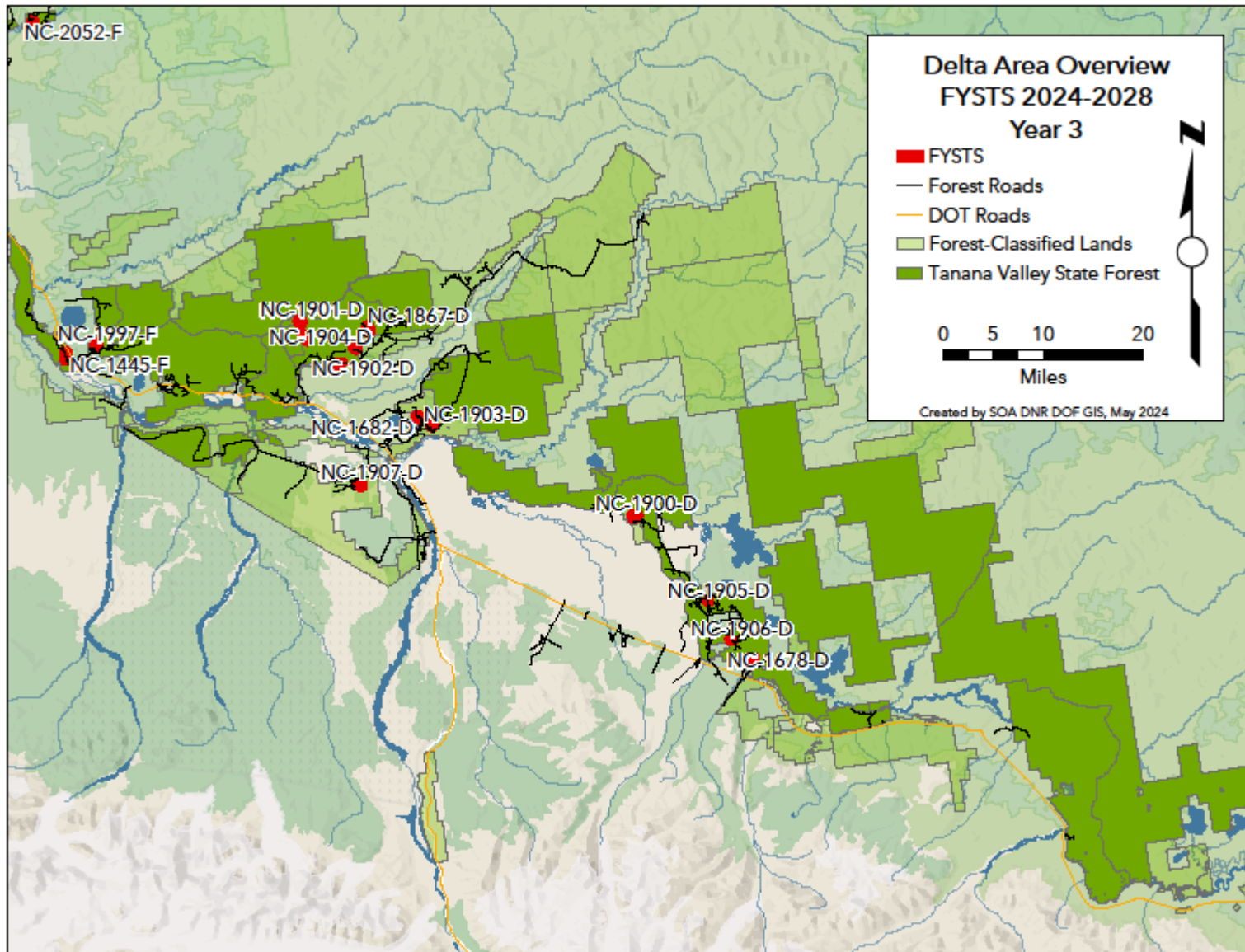
Delta
 Northern Region

STATE OF ALASKA
 DEPARTMENT OF NATURAL RESOURCES
 DIVISION OF FORESTRY
 TIMBER HARVEST SCHEDULE
Year 3 of 5
 July 1, 2026 to June 30, 2027

of Sales 12
 Total Acres 475.0
 Spruce Sawlog (MBF) 1,922
 Fuelwood (Cords) 2,903

FYSTS Year	Sale Number	Units	Sale Name	Legal Description	Acres	Species	Product	Volume*	Land Manager	Area Plan	Management Unit	Remarks
3	NC-1678-D	1	Back N Black #1	Sections 1, 12, T13S, R15E	45.4	White Spruce	Sawlog	396	DOF	TVSF	10C	Alcan Hwy MP 1389, winter only
3	NC-1682-D	1	Strike & Spare	Sections 15, T8S, R10E	47.6	White Spruce	Sawlog	408	DMLW	ETAP	D-12	Quartz Lake Extension Rd
3	NC-1867-D	1	Rowland #8	Section 36, T6S, R9E	65.2	Birch	Fuel	941	DOF	TVSF	8C	Pogo Rd
3	NC-1900-D	2	Cummings Road Extension #2	Section 19, T10S, R14E	59.8	White Spruce White Spruce	Sawlog Fuel	350 664	DOF	TVSF	10C	Cummings Rd
3	NC-1901-D	4	Upper Keystone Fire Salvage	Sections 23, 26, 35, & 36, T6S,	111.6	White Spruce	Fuel	498	DOF	TVSF	8C	Pogo Rd, burned 2023
3	NC-1902-D	1	Pogo Fire Salvage Mile 7	Sections 16-17, T7S, R9E	33.8	Mixed	Fuel	226	DMLW DOF	ETAP TVSF	D-10 8C	Pogo Rd, burned 2023
3	NC-1903-D	1	Garnet Spruce	Section 23, T8S, R10E	33.3	White Spruce	Sawlog	195	DMLW	ETAP	D-12	Quartz Lake Extension Rd
3	NC-1904-D	1	Caribou Creek Spruce #2	Section 10, T7S, R10E	22.8	White Spruce	Sawlog	220	DOF	TVSF	8C	Pogo Rd, winter only
3	NC-1905-D	1	Woodstove Spruce #2	Section 6, T12S, R15E	3.8	White Spruce	Fuel	84	DOF	TVSF	10C	Cummings Rd
3	NC-1906-D	1	Cummings East Spruce #2	Section 28, T12S, R15E	7.6	White Spruce	Sawlog	44	DOF	TVSF	10C	Cummings Rd
3	NC-1907-D	1	Mississippi Green Spruce	Section 15, T9S, R9E	44.1	White Spruce White Spruce	Sawlog Fuel	172 490	DMLW	ETAP	D-21	Delta River West, winter only

*all volumes converted from CCF (100 cubic feet). Sawlog Volume: MBF (1,000 board-feet) = 1 CCF * 0.39. Fuelwood Volume: Cords = 1 CCF / 0.9



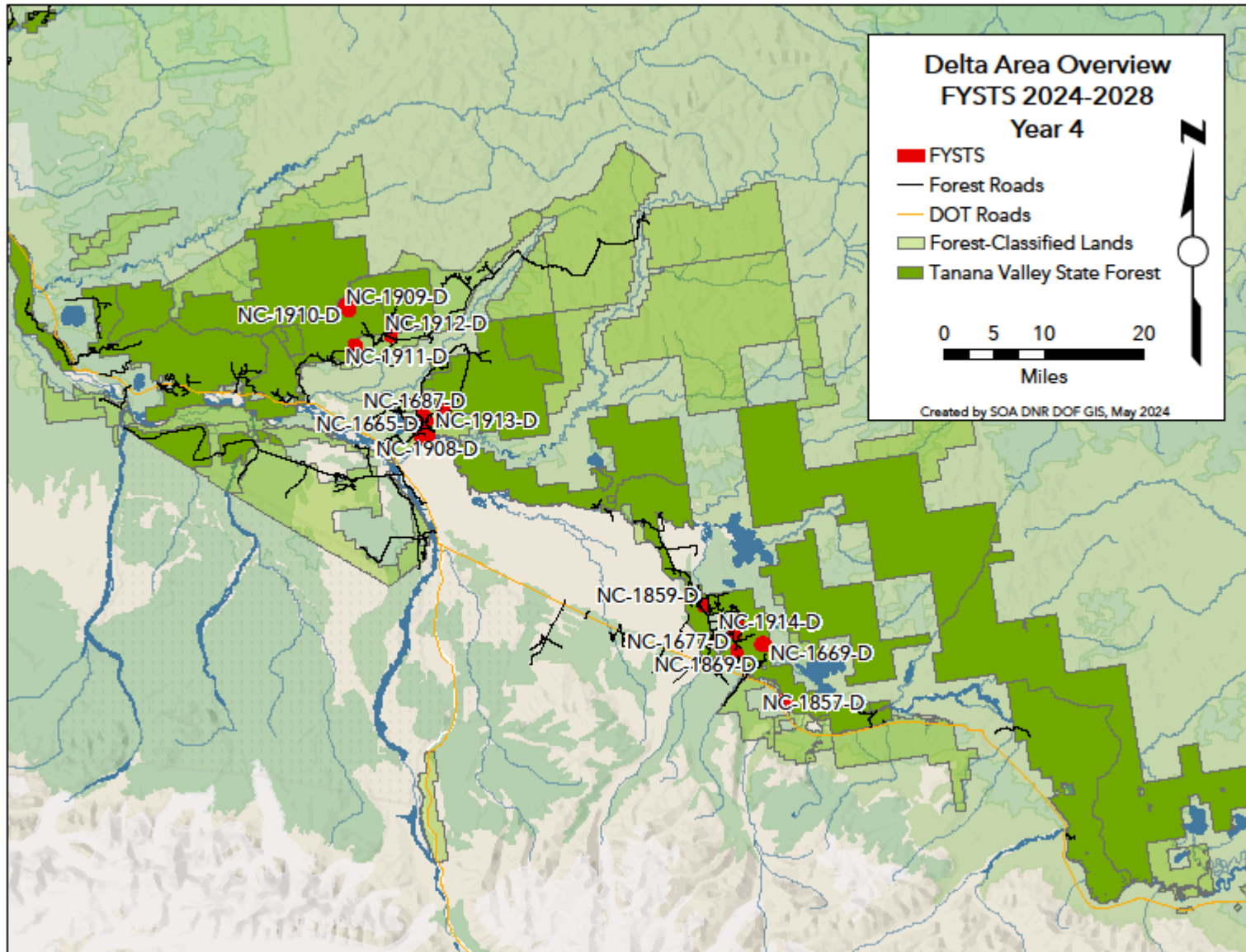
Delta
 Northern Region

STATE OF ALASKA
 DEPARTMENT OF NATURAL RESOURCES
 DIVISION OF FORESTRY
 TIMBER HARVEST SCHEDULE
Year 4 of 5
 July 1, 2027 to June 30, 2028

of Sales 14
 Total Acres 725.9
 Spruce Sawlog (MBF) 3,281
 Fuelwood (Cords) 4,182

FYSTS Year	Sale Number	Units	Sale Name	Legal Description	Acres	Species	Product	Volume*	Land Manager	Area Plan	Management Unit	Remarks
4	NC-1665-D	1	Quartz Lake Birch	Sections 15, 22, T8S, R10E	100.9	Birch	Fuel	1667	DMLW	ETAP	D-12	Quartz Lake Extension Rd
4	NC-1669-D	1	Black Lake #4	Section 36, T12S, R15E	134.5	White Spruce	Sawlog	1170	DOF	TVSF	10C	Little Gerstle & Tanana River, winter only
4	NC-1677-D	1	Birch Hill	Sections 21, 22, 28, T12S, R15E	60.8	Birch	Fuel	1111	DOF	TVSF	10C	Cummings Rd
4	NC-1857-D	1	Alcan Mile 1384 Spruce	Sections 32, 33, T13S, R16E	78.6	White Spruce	Sawlog	456	DMLW	ETAP	D-58	Alcan Hwy MP 1384
4	NC-1859-D	1	Cliffhanger #3	Sections 1, 12, T12S, R14E	18.3	White Spruce White Spruce	Sawlog Fuel	140 140	DOF	TVSF	10C	Cummings Rd
4	NC-1869-D	1	Gerstle Hills Re-offer	Section 33, T12S, R15E and Section 3, T13S, R15E	24.2	White Spruce	Sawlog	205	DOF	TVSF	10C	Cummings Rd
4	NC-1908-D	2	Topaz Spruce	Sections 26-27, T8S, R10E	56.4	White Spruce	Sawlog	441	DMLW	ETAP	D-12	Quartz Lake Extension Rd, winter only
4	NC-1909-D	1	Caribou Creek Fire Salvage	Sections 15 & 22, T6S, R9E	39.0	Mixed	Fuel	217	DOF	TVSF	8C	Pogo Rd, burned 2023
4	NC-1910-D	1	Caribou Creek Fire Salvage	Sections 15 & 22, T6S, R9E	126.7	Mixed	Fuel	703	DOF	TVSF	8C	Pogo Rd, burned 2023
4	NC-1911-D	1	Caribou Creek Spruce #3	Section 3, T7S, R9E	32.3	White Spruce	Sawlog	312	DOF	TVSF	8C	Pogo Rd, winter only
4	NC-1912-D	1	Pogo Mile 14 Spruce	Section 5, T7S, R10E	23.4	White Spruce	Sawlog	183	DMLW	ETAP	D-10	Pogo Rd
4	NC-1913-D	1	Quartz 8 Mile Mixed #3	Section 13, T8S, R10E	20.8	White Spruce Mixed	Sawlog Fuel	82 234	DOF	TVSF	9A	Quartz Lake Extension Rd
4	NC-1914-D	1	Cummings East Mixed #2	Section 28, T12S, R15E	9.9	White Spruce Mixed	Sawlog Fuel	58 110	DOF	TVSF	10C	Cummings Rd

*all volumes converted from CCF (100 cubic feet). Sawlog Volume: MBF (1,000 board-feet) = 1 CCF * 0.39. Fuelwood Volume: Cords = 1 CCF / 0.9



Delta
Northern Region

STATE OF ALASKA
DEPARTMENT OF NATURAL RESOURCES
DIVISION OF FORESTRY
TIMBER HARVEST SCHEDULE
Year 5 of 5
July 1, 2028 to June 30, 2029

of Sales 13
Total Acres 776.2
Spruce Sawlog (MBF) 5,317
Fuelwood (Cords) 2,826

FYSTS Year	Sale Number	Units	Sale Name	Legal Description	Acres	Species	Product	Volume*	Land Manager	Area Plan	Management Unit	Remarks
5	NC-1195-D	1	Rapid Creek #1	Sections 28, 29, 33, T7S, R11E	208.6	White Spruce	Sawlog	1788	DOF	TVSF	9A	2012 FLUP, Quartz Lake Extension Rd, winter only
5	NC-1368-D	1	Newby Mill #6	Section 10, T12S, R15E	54.5	White Spruce	Sawlog	48	DOF	TVSF	10C	Cummings Rd
5	NC-1666-D	1	Volkmar Crossing	Sections 9, T10S, R13E F.M.	81.5	White Spruce	Sawlog	741	DOF	TVSF	10A	Cummings Rd, winter only
5	NC-1860-D	1	Alcan Mile 1384 Birch	Section 32, T13S, R16E	19.9	Birch	Fuel	378	DMLW	ETAP	D-56	Alcan Hwy MP 1384
5	NC-1861-D	1	Bert Mountain Spruce #1	Section 31, T8S, R10E; Section 36, T8S, R9E	36.9	White Spruce	Sawlog	433	DMLW	ETAP	D-12/D-13	Richardson Hwy MP 277
5	NC-1862-D	1	Bert Mountain Spruce #2	Section 31, T8S, R10E; Section 5, T9S, R10E	79.2	White Spruce	Sawlog	924	DMLW	ETAP	D-12	Richardson Hwy MP 277
5	NC-1863-D	1	Keystone Bluff #3 Re-Sale	Section 8, T7S, R9E	16.2	White Spruce	Sawlog	94	DOF	TVSF	8C	Pogo Rd
5	NC-1868-D	1	Rowland #10	Section 26, T6S, R9E	35.1	White Spruce	Sawlog	273	DOF	TVSF	8C	Pogo Rd
5	NC-1915-D	2	Upper Keystone Birch	Sections 4 & 9, T7S, R9E	128.4	Birch	Fuel	2141	DOF	TVSF	8C	Pogo Rd
5	NC-1916-D	1	Woodstove Spruce #3	Section 6, T12S, R15E	13.8	White Spruce	Fuel	307	DOF	TVSF	10C	Cummings Rd
5	NC-1917-D	1	Hadjukovich Creek Spruce	Section 29, T12S, R13E	19.9	White Spruce	Sawlog	156	DFG	DJBR	DJBR	Bison Range, Alcan MP 1402
5	NC-1917-D	2	Delta Creek Winter Spruce	Sections 22-23, T8S, R7E	82.1	White Spruce	Sawlog	480	DOF	TVSF	8A	Delta River West, winter only

*all volumes converted from CCF (100 cubic feet). Sawlog Volume: MBF (1,000 board-feet) = 1 CCF * 0.39. Fuelwood Volume: Cords = 1 CCF / 0.9

2024-2028 Five Year Schedule of Timber Sales
DOF – Fairbanks-Delta

