

**DIVISION OF FORESTRY & FIRE  
PROTECTION  
FAIRBANKS-DELTA**

**DRAFT**  
**FIVE YEAR SCHEDULE OF TIMBER SALES**  
**Fiscal Year**  
**2026-2030**



Submitted By:

**Kevin Meany**  
Northern Region Forester

Prepared By:

**Bret Foster**  
Resource Forester

Division of Forestry & Fire Protection  
Department of Natural Resources  
State of Alaska  
3700 Airport Way  
Fairbanks, Alaska 99709  
Phone: (907) 451-2626

**ALASKA DEPARTMENT OF NATURAL RESOURCES  
DIVISION OF FORESTRY & FIRE PROTECTION  
FAIRBANKS-DELTA  
Five-Year Schedule of Timber Sales (FYSTS)  
Fiscal Year 2026-2030**

This Five-Year Schedule of Timber Sales (FYSTS) provides information about planned and / or proposed timber sales and associated road construction in the Fairbanks and Delta Management Areas. This schedule is planned to support the local forest industry along with providing for the local demand for woody biomass and fuelwood.

***Purpose of the Five- Year Schedule of Timber Sales***

This schedule is a scoping document that provides a timeline that identifies timber sales, their volumes, and their locations. It must contain enough information to provide the public and the forest products industry with a basis to comment on proposed sale offerings. The timber sales included in this schedule are part of a management policy that ensures a sustained yield of renewable forest resources and the integrated use of forest lands by a myriad of users, as guided by Alaska State statutes and regulations, the Tanana Valley State Forest Management Plan (TVSF MP, 2025), and the State of Alaska DNR’s Yukon-Tanana Area Plan (YTAP, 2014) and Eastern Tanana Area Plan (ETAP, 2015). Sales are located across a wide area of the forest land base, and vary in size, species composition, and developmental requirements. Emergency salvage sales, market conditions, sale preparation challenges, logistical constraints, funding and other considerations may cause some proposed sales to be dropped or moved between years.

Generally, the Division of Forestry & Fire Protection (DFFP) may not offer a timber sale unless it has appeared on at least one of the two Five-Year Schedules immediately preceding the sale. Sales are exempt from this requirement if they are: 160 acres or less; will cause substantial losses of economic value on salvage sales; or emergency sales in areas with fire; allow for the spread of damaging insects, or other natural threats; or preclude a local economic enterprise or forest management project that is in the state’s best interest. (References: AS 38.05.113, AS 38.05.117, and 11 AAC 71.010)

***Timber Sale Land Base***

The forest management activities identified in this Five-Year Schedule of Timber Sales 2026-2030 are consistent with the Yukon-Tanana Area Plan (YTAP), Eastern Tanana Area Plan (ETAP) and the Tanana Valley State Forest (TVSF) Management Plan. The TVSF Plan covers approximately 1.81 million acres of legislatively designated lands in the Fairbanks and Delta Areas, and the ETAP/YTAP provide management guidance on all types of state land over an even larger area. Large tracts of forest are classified Forestry management intent , and can have multiple designations such as wildlife habitat, recreation, and settlement. These sales have the potential for multiple project goals such as timber production, wildlife habitat enhancement, wildland fire fuels mitigation, and development of settlement lands.

## ***Management Intent of the DFFP Timber Sale Program***

DFFP’s management intent for Fairbanks-Delta Area is to provide raw material available for harvest to the local/regional timber businesses of all sizes and to Alaska’s Interior communities for personal use. This FYSTS is designed to meet the current and anticipated demands for timber and fuel in the Fairbanks-Delta Area for the next five years.

Forest access roads will be constructed to meet DFFP Road and Bridge Standards, the TVSF Management Plan, the ETAP and YTAP, and Best Management Practices for the Alaska Forest Resources and Practices Act AS 41.17). Road construction is divided into two main categories: winter road only and all-season road. DFFP will work closely with ADF&G staff, relevant Advisory Committees, and private landowners on creating road access that meets the needs of multiple user groups. Future road development will focus on quality design and location to improve all season road conditions, lower the cost of maintenance, and provide year-round access. Gates to prevent highway vehicle access may be utilized for seasonal closures or to protect sensitive areas. Where pertinent, approximate access routes have been indicated in maps. DFFP will address access development and roads in detail with each of the Best Interest Findings and Forest Land Use Plans (FLUP) for every proposed timber sale submitted for agency and public review.

The Fairbanks-Delta Area DFFP office works closely with ADF&G biologists on timber harvest activities and wildlife habitat enhancement projects to minimize impacts of road construction and timber harvest on fish and wildlife resources. DFFP will look at each timber harvest opportunity to maximize the habitat benefit for wildlife where feasible. Projects with dual goals of timber harvest and habitat enhancement are included in this plan. In line with TVSF Management intent and Plan Guidelines, as well as following established habitat best management practices (see for example Paragi et al 2020, “Managing Boreal Forest for Timber and Wildlife in the Tanana Valley of Eastern Interior Alaska”).

## ***Timber Harvest***

### Overview

Harvest activity has been trending upward in the Fairbanks-Delta Area over the past 5 years, and DFFP seeks to support growth of the timber industry and Alaskans’ access to their natural resources by offering a wide variety of timber sales and associated road network upgrades.

Demand has increased for all timber products, which has reduced the backlog of unsold sales on the Over-the-Counter (OTC) list and generated interest among larger timber buyers in obtaining long-term contracts with the State. In the Fairbanks Area, DFFP has initiated 3 Long Term timber sales and is currently planning an additional Long Term timber sale (AS 38.05.118, referred to as “Long Term Sales”). Future Long Term Sale units are included for scoping within this Fairbanks-Delta FYSTS, in addition to sales that will be sold through the Competitive Bid program (AS 38.05.120) and the Small Negotiated Sale program.

**All Sales by Fiscal Year**

<b>Fiscal Year</b>	<b>FAIRBANKS</b>		<b>DELTA</b>	
	<b>Acres</b>	<b>Sales</b>	<b>Acres</b>	<b>Sales</b>
2022	620	15	198	11
2023	480	15	295	13
2024	878	18	134	21
2025	542	14	214	9
2026	823	31	249	13
<b>Average</b>	<b>669</b>	<b>19</b>	<b>218</b>	<b>13</b>

New startups and smaller logging operators continue to express interest in lower volume/acreage sales that fit their production capacity needs and are within their economic range. In the past, demand for smaller sales has been met through the Small Negotiated Sale program (AS 38.05.115, 11 AAC 71.045; typically < 10 acres). These sales generally involve fuelwood or mixed species stands along the existing road network. From 2020-2025, Fairbanks-Delta Area sold annually 12 sales totaling 94 acres through the Small Negotiated Sale program.

**Small Neg. (115) Sales by Calendar Year**

<b>Calendar Year</b>	<b>Sales</b>	<b>Acres</b>
2020	9	81
2021	13	135
2022	12	77
2023	18	134
2024	11	74
2025	9	64
<b>Average</b>	<b>12</b>	<b>94</b>

Consistently high level of demand for these types of sales signals a market need for more timber sales that are scaled for smaller operations. Fairbanks-Delta Area is proactively meeting this

demand by including small sales in this FYSTS and bringing them forward for auction where applicable. Demand for small sales will be met first through the competitive bid auction process. When small negotiated sale requests occur outside of the auction process, they will be fulfilled with the nearest suitable sales identified in this FYSTS.

### Transportation and Access

DFFP is developing a long-term transportation plan to guide infrastructure development, and this FYSTS is intended to support planning goals. Forest roads are constructed to facilitate silvicultural activities involved in managing a productive forest, including harvest of forest products, fire suppression, forest health and reforestation monitoring, pre-commercial treatments, etc. Most of the roads within the TVSF forest road network were constructed by logging operations as infrastructure improvements required by individual timber sale contracts. Forest roads are built and maintained according to the 2016 DNR-DFFP Road & Bridge Standards, and Foresters routinely inspect and monitor road conditions. Winter-only routes are used to minimize disturbance in areas of permafrost or high water tables, or where stream or river crossings are necessary to reach a timber sale. A majority of the timber volume on State land is harvested during the winter, even along all-season roads.

Once constructed, forest roads are a valuable asset to future logging operations, who benefit from lower operating costs to obtain and maintain access to future timber sale opportunities. The public also benefits from the access provided via the logging road system for personal use firewood harvest, hunting and trapping, recreation, and subsistence activities among many other compatible uses.

Ultimately, DFFP envisions all areas of merchantable timber within TVSF and Forestry-classified general state lands will be connected to the road network. Larger sales have higher stumpage values and can support larger road projects. More experienced and capitalized operators purchase these larger sales, and have the expertise and equipment to complete road projects prescribed in the contract.

Fairbanks-Delta Area plans to concentrate project areas for small sales around the first several miles of mainline forest roads to better facilitate access for small operators as well as provide more focused road maintenance support within a project area. This proposed plan will ideally lead to improved road conditions across the TVSF, one road system at a time.

Some of the proposed sales in this FYSTS involve new construction, for example extensions of existing forest roads like Jenny M Hill Road or connecting Cache Creek and Standard Creek Roads. Some sales support the construction of new access routes, such as the Rowland and Greenstone sale areas north of Pogo Mine Road or all-season spur roads along Quartz Extension.

Many of the sales in this FYSTS utilize existing forest roads, often with an objective to upgrade access. Upgrades facilitated through these timber sales include hardening, widening, or grading the surface; improving ditches and drain dips; brushing the right-of-way; constructing pullouts and parking areas; and installing or replacing bridges and culverts.

### *Biomass / Fuelwood Harvests*

In the Fairbanks Area, Aurora Energy Solutions, LLC, continues their kiln-dried firewood operation, specializing in birch fuelwood. Aurora operates a firewood kiln that utilizes waste heat from the Fairbanks Coal Power Plant to efficiently dry wood below the Fairbanks-Northstar Borough's (FNSB) 20% moisture standard (implemented October 2021).

Several new firewood outfits located in the Fairbanks-Delta area have begun to purchase timber sales through the DFFP timber sale program, largely through the competitive bid timber sale program. DFFP has positioned the competitive bid timber sale program to include a mix of offerings that appeal to both large and small operations. Larger sales typically occur toward the ends of forest roads or require new construction to access, while smaller sales can be located within shorter distances from pavement.

Salvage harvests of all kinds are in high demand both among the wood-cutting public as well as numerous firewood-selling operations in the Fairbanks-Delta Area. High fuel prices tend to correlate with high firewood demand. Small batch or less capitalized operators may find it desirable to avoid lengthy or expensive drying processes involved in green sales. The fuelwood value of fire salvage is longest for standing spruce, and declines quickly for birch or trees in contact with the ground. In Delta, recent auctions have seen highest bidding activity on fire salvage timber. To meet this demand, DFFP will offer salvage wherever economic opportunities are available. For example, the 2025 Nenana Ridge Complex Fire burned thousands of acres, primarily within low productivity valley bottom black spruce woodlands west of Fairbanks. However, several hundred acres of valley-adjacent spruce sawlog and mixed fuelwood stands were impacted by fire. Where access and timber merchantability is economic, salvage sales will be offered suited to personal use and commercial harvest.

In the Fairbanks Area, a recent access agreement between Alaska Department of Natural Resources (DNR) and FNSB will facilitate access to the 2011 Hastings Fire Salvage area, a previously landlocked portion of TVSF Unit 4A.

DFFP has proposed to offer for sale approximately 2,900 acres of white spruce, birch and balsam poplar sawtimber and fuelwood to be harvested over a 25-year period from state lands within Township 8 South, Range 9 East, Kateel River Meridian, roughly 2 ½ miles northwest of Galena, Alaska. A request for timber sales has been made by the village to DFFP to supply a wood chip fired boiler that is being installed in the Galena Interior Learning Academy. DFFP would sell the timber either as a competitive or negotiated sale for commercial use.

### *Sawlog Harvests*

Demand for sawlog sales in the Fairbanks-Delta Area has been steady, with some signs of future increase. While there are only a few larger mills in the Fairbanks-Delta Area, sawlog sales have increased over the past 5 years. Mill operators from Southcentral Alaska have also increasingly looked north of the Alaska Range, particularly in the Anderson and Nenana areas, to source raw

logs in the aftermath of the heavy tree mortality in the Mat-Su area from the spruce bark beetle outbreak that began around 2015.

**Sawlog Sales for Fairbanks and Delta**

<b>Fiscal Year</b>	<b>Acres</b>	<b>CCF</b>	<b>MBF</b>
2022	292	7,412	2,891
2023	194	4,687	1,828
2024	308	9,862	3,846
2025	183	8,116	3,185
2026	423	14,631	5,706
<b>Average</b>	<b>280</b>	<b>8,942</b>	<b>3,491</b>

Local consumer interest in primary products such as cabin logs, tongue and groove, and dimensional lumber is high, and level of inquiries from potential operators as well as the public have increased over previous years. However, operators are experiencing increasing costs for fuel, shortages of parts, aging equipment and staff, and high competition in the labor market. These factors may hamper the entrance of new logging operators and the expansion of existing operations. To address the sawlog demand of both large mills and small operators alike, DFFP has included a wide range of access types and sale sizes.

Sawlog harvests will be planned to occur across the landscape in a patch mosaic utilizing natural lines and limited viewsheds. Many of the roads accessing the harvest units are designed for all-season, long-term access for forest management and public use. The FLUPs will address details of harvest, roads and all other important considerations. As units are harvested, DFFP will review the plan to ensure harvest design and transportation routes continue to be in line with the original FLUP.

*Habitat Treatments*

DFFP and ADF&G have cooperated on habitat enhancement projects on TVSF since the late 1990s. The goals of these habitat enhancement projects are to improve browse availability for moose, enhance habitat conditions for upland game bird species and facilitate hunter access.

To build upon the projects that have been completed thus far, additional mature aspen stands in the Two Rivers Forest Road area are similarly planned to provide the early successional habitat of dense, young root suckered aspen.

Within these proposed 12 units, mature aspen are planned to be mechanically felled and either consolidated or removed to improve hunter access while providing valuable early successional habitat for wildlife species. The proposed project will cover roughly 145 acres over 6 years, and will result in roughly 8.5 new miles of multi-use trails to facilitate public access within the treatment areas.

***Sustained Yield***

The Alaska Land Act requires that state land be managed for sustained yield, which is “the achievement and maintenance in perpetuity of a high level of annual or regular periodic output of the various renewable resources of the state land consistent with multiple uses” (AS 38.04.910). In each of the years covered in this schedule, the total annual volume of wood proposed for harvest is below the annual allowable cut determined in the Timber Inventory of State Forest Lands in the Tanana Valley (Hanson, 2013). For the three Management Units covered by this FYSTS (see table below), the Timber Inventory of State Forest Lands in the Tanana Valley (Hanson, 2013) indicates that the annual allowable cut on State Forest-Classified land is approximately 11,604 acres and 213,124 CCF. Thus, the proposed average yearly harvests for this schedule constitute less than the volume or acreage of the Annual Allowable Cut on Forest designated lands.

**The proposed harvest on state lands with a Land Use Designation of Settlement are not part of and are not required to be a part of the Sustained Yield calculations.**

**Annual Allowable Cut on State Forest-Classified Lands**

<b>Management Unit</b>	<b>Acres</b>	<b>Volume (CCF)</b>
Kantishna	3,050	55,405
Fairbanks	4,606	85,065
Delta	3,948	72,653
<b>TOTAL</b>	<b>11,604</b>	<b>213,124</b>

### ***Reforestation***

DFFP plans and utilizes timber sale designs which promote natural seeding by maintaining adequate seed tree sources, protection of existing saplings and pole timber during harvest operations, site preparation methods, and if necessary, planting of seedlings. Coppice regeneration with aspen and birch is the expected and predominant first regeneration of many of the sale areas. Sale areas generally reforest to a mixed stand of white spruce, birch, aspen and poplar, and DFFP monitors reforestation through site visits and regeneration surveys. Reforestation efforts have been successful in multiple areas of the State Forest. Sale-specific regeneration methods used will be covered in detail in the Preliminary Best Interest Finding (PBIF) and Forest Land Use Plan (FLUP) process.

### ***Management Plan***

AS 41.17.220 – 230 requires DFFP to develop a management plan for the Tanana Valley State Forest. The management plan guides many of DFFP’s management actions. The FYSTS is consistent with the guidelines and direction established in the TVSF Management Plan. Some of the sales may be for areas outside of the boundaries of the TVSF and are proposed on state owned forestry classified lands; these sales are consistent with the YTAP and ETAP and other state land management plans. Together the TVSF Management Plan, the YTAP, and the ETAP are available for review at the Fairbanks, Delta Offices.

### ***Schedule Review Process***

The Review Draft Five-Year Schedule of Timber Sales is submitted for review and comment to several State agencies. Comments about specific timber sales from Alaska Department of Fish and Game – Habitat Division, Alaska Division of Mining, Land and Water, Alaska Department of Environmental Conservation and other agencies are used to draft a FLUP and PBIF for timber sales in years one and two (AS 38.05.112). The FLUP and PBIF gives site specific information for each sale describing the location, estimated timber volume, harvest methods, reforestation plan, access, and other potential uses of the sale area. Before any commercial timber sale of ten acres or larger is offered, DFFP prepares a FLUP and PBIF and makes a finding that the sale is in the State’s best interest. The schedule followed by individual FLUPs and PBIF is then distributed for review by the public. Public comments are considered, and revisions are made as appropriate before the schedule is adopted. Sales where the FLUPs and PBIF have been previously reviewed by the public and agencies are noted on the schedule. Sales that have been reviewed and are currently available over the counter are also listed.

**Public & Agency review periods run concurrently from June 11, 2026, to 4:30pm AKDT, Monday, July 13, 2026.**

## Individual Sale Maps *All Areas*

Every individual sale on the proposed Five-Year Schedule of Timber Sales (FYSTS) can be viewed in greater geographic detail on DFFP’s dynamic web-based viewer. Using the web map, interested parties may view any sale in many different contexts (i.e., at any scale; with other layers of interest such as historical sales, ownerships, or fire perimeters; with imagery vs topographic Basemaps, etc.), on any internet-enabled device, and may even download custom map views for offline use.

Providing this interactive and scalable viewing method to the public allows DFFP to better meet the intent of the [FYSTS Statute](#) (AS 38.05.113) which reads in part: *“the department shall prepare a five-year schedule of timber sales planned on all land managed by the department. The timber sale schedule must provide a time line that identifies timber sales, their volumes, and their locations and must contain sufficient information to provide the public and the forest products industry with a basis to comment on proposed sale offerings.”*

Interested parties can always contact DFFP for assistance with obtaining necessary information to understand, interpret, and/or provide comments on the proposed Five-Year Schedule.

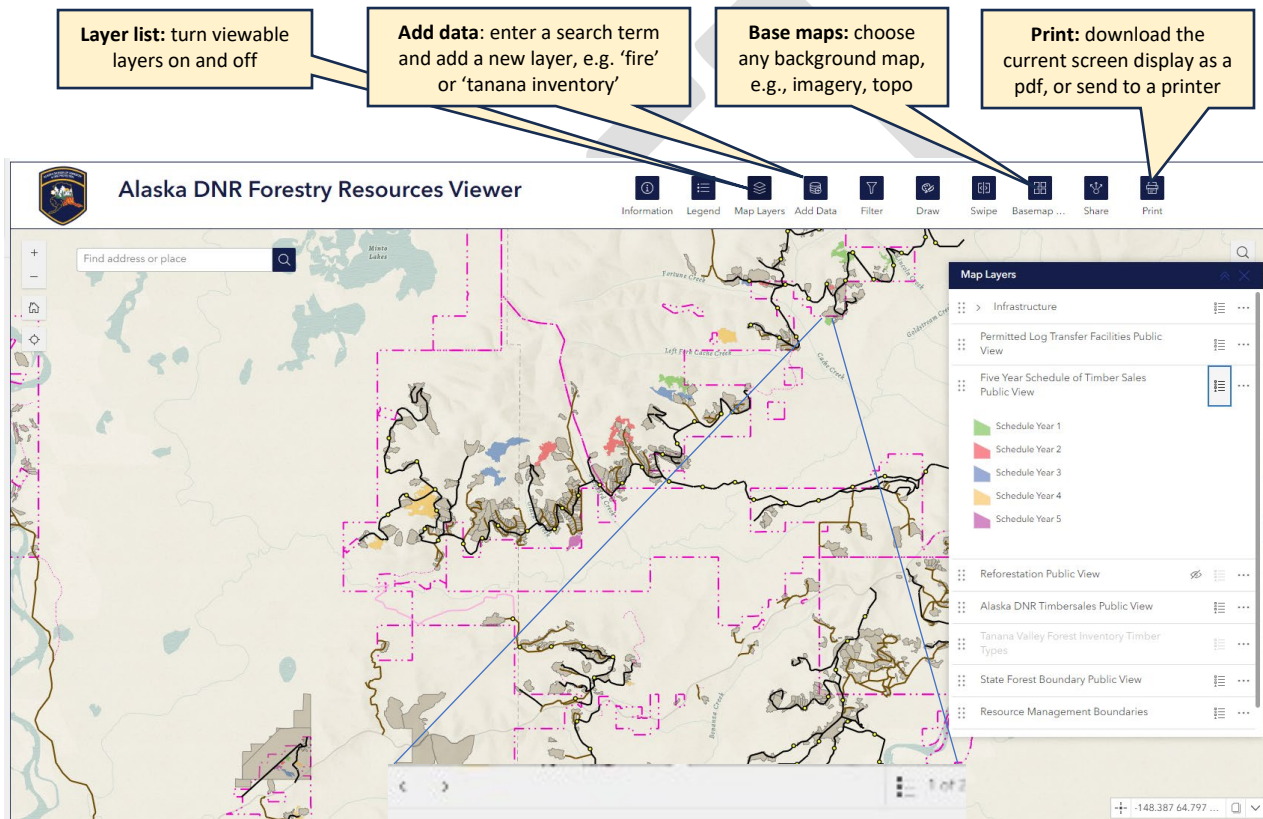
Individual sales proposed on the 2026 Fairbanks-Delta FYSTS may be viewed at the [Alaska DNR Forestry Resources Viewer](#) (also scan QR code below, or search in web browser). All sales will be symbolized by year in the layer ‘Five Year Schedule of Timber Sales Public View’ (searchable as ‘FYSTS Public View’, and included as a default layer in the Resources Viewer).

Alaska DNR Forestry Resources Viewer:



## Alaska DNR Forestry Resources Viewer – FYSTS Public View Guide

- 1) Open a web browser on any internet-connected device. The web map interface is nearly identical on desktop or mobile (iOS or Android) devices.
- 2) Open the Alaska DNR Forestry Resources Viewer at <https://experience.arcgis.com/experience/82e11f6660d34b568319643cadee80ab>, or by typing ‘alaska forestry resources viewer’ or similar into your web browser’s search bar.
- 3) Zoom into sale or area of interest. Note the layer ‘FYSTS Public View’ is displayed by default, but is not visible until zooming past a scale of 1:1,200,000



Individual items (e.g., sales) on the map may be selected simply by clicking on them. In the case where more than 1 layer is present at the selected point, press the arrow icon (► upper right) to view all data associated with the specific layer.

Five Year Schedule of Sales	
Sale Number	NC 1984-F
Sale Name	Casho Point Mixed
FYSTS Year	1
proposed year	2024
Management (Stock)	Timberlands
acres	25.68
Species 1	WhiteSpruce

**FY2026-2030 FAIRBANKS AREA  
INDIVIDUAL TIMBER HARVEST SCHEDULE  
(INCLUDES GALENA VICINITY SALES)**

DRAFT 2026-2030 Five Year Schedule of Timber Sales  
DFFP – Fairbanks-Delta

Fairbanks  
Northern Region

STATE OF ALASKA  
DEPARTMENT OF NATURAL RESOURCES  
DIVISION OF FORESTRY AND FIRE PROTECTION  
TIMBER HARVEST SCHEDULE

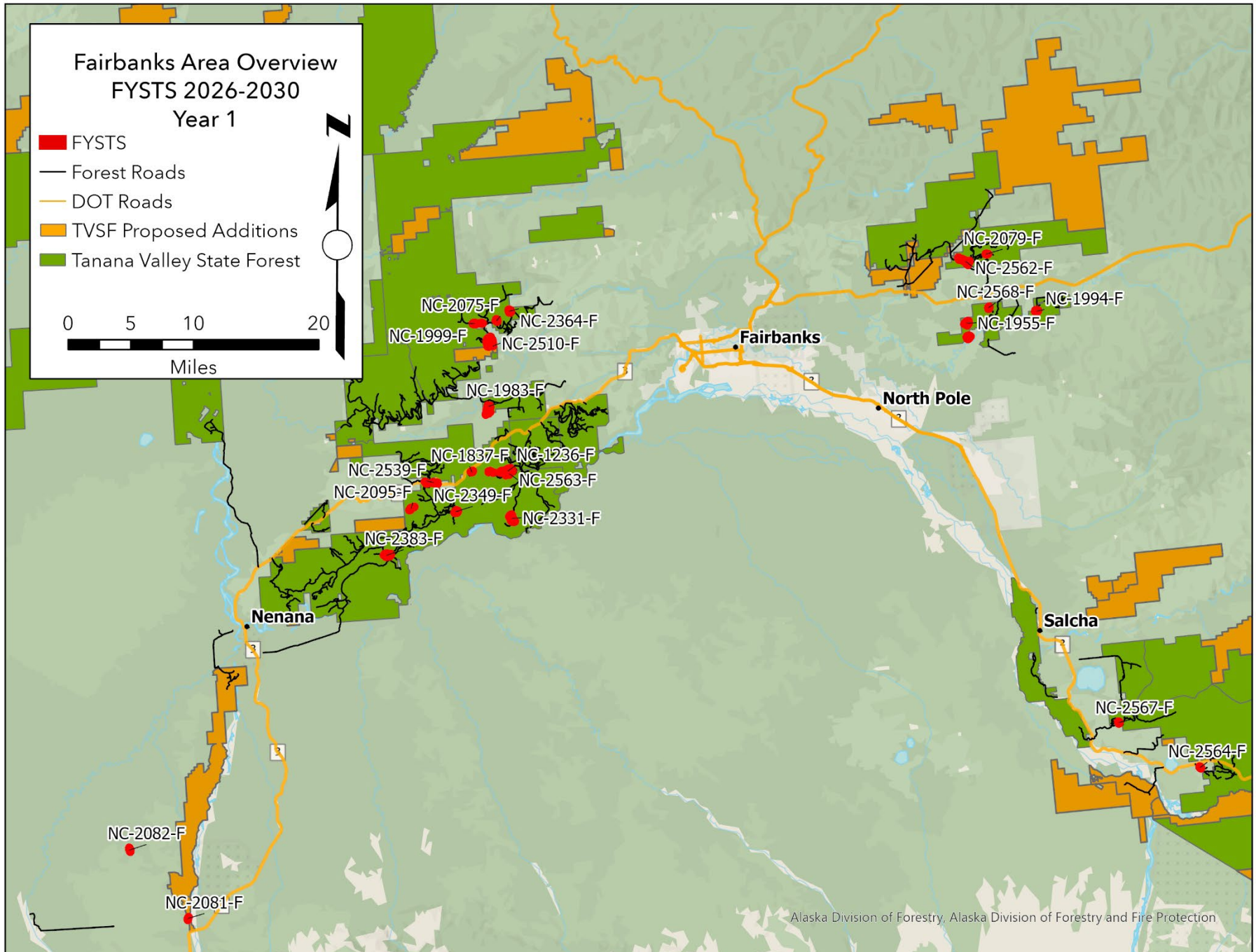
# of Sales 23  
Total Acres 815.2  
Spruce Sawlog (MBF) 5,818  
Fuelwood (Cords) 3,264

Year 1 of 5  
July 1, 2026 to June 30, 2027

FYSTS Year	Sale Number	Units	Sale Name	Legal Description	Acres	Species	Product	Volume*	Land Manager	Area Plan	Management Unit	Road System
1	NC-1236-F	1	Camp 78 Spruce	Sections 21 & 28, T2S, R4W	108.1	White Spruce White Spruce	Sawlog Fuel	1025 556	DFFP	TVSF	5A	Bonanza Creek Rd
1	NC-1837-F	1	Parks Hwy 332 Spruce	Section 24, T2S, R5W	9.6	White Spruce	Sawlog	103	DFFP	TVSF	5A	Parks Hwy MP 332
1	NC-1955-F	2	Chena Bluff Spruce	Section 14, T1S, R3E	89.4	White Spruce Birch	Sawlog Fuel	943 233	DFFP	TVSF	6	Pheasant Farm Rd, winter only
1	NC-1983-F	4	Standard Ck 6 Mile Spruce #3	Section 32, T1S, R4W	40.8	White Spruce White Spruce	Sawlog Fuel	101 204	DMLW/DFFP	AP/TV	F-36/5A	Standard Creek Rd
1	NC-1994-F	1	Pleasant Valley Spruce #2	Sections 2 & 11, T1S, R4E	24.6	White Spruce	Sawlog	503	DFFP	TVSF	6	Pleasant Valley Rd, winter only
1	NC-1999-F	2	Fortune Creek Mixed #2	Section 29, T1N, R4W	25.3	Birch White Spruce	Fuel Sawlog	248 38	DFFP	TVSF	4C	Cache Creek Rd
1	NC-2075-F	1	Cache Ridge Spruce	Sections 21 & 28, T1N, R4W	15.0	White Spruce White Spruce	Sawlog Fuel	154 40	DFFP	TVSF	4C	Cache Creek Rd
1	NC-2079-F	1	Two Rivers Ridge Birch #2	Section 18, T1N, R4E	8.2	Birch	Fuel	163	DFFP	TVSF	6	Two Rivers Rd
1	NC-2081-F	1	Nenana River Levee Spruce	Section 10, T8S, R9W	6.3	White Spruce Mixed	Sawlog Fuel	29 39	DMLW/DFFP	YTAP	P-30	Anderson area
1	NC-2082-F	1	Clear Fire Salvage #2	Sec. 12-13, T7S, R10W	13.2	Aspen	Fuel	56	DMLW	YTAP	P-16	Anderson area
1	NC-2095-F	3	Nenana Ridge Fire Salvage	Section 6, T3S, R5W	30.6	Mixed	Fuel	172	DFFP	TVSF	5A	Nenana Ridge Rd
1	NC-2331-F	1	Mantis Spruce	Sections 9 & 16, T3S, R4W, F.M.	70.9	White Spruce	Sawlog	861	DFFP	TVSF	5A	Bonanza Creek Rd, winter only
1	NC-2349-F	1	Bluff's Edge Mixed	Section 2, T3S, R5W	29.6	White Spruce Birch	Sawlog Fuel	178 161	DFFP	TVSF	5A	Nenana Ridge Rd
1	NC-2364-F	1	Telemark Birch	Sections 22 & 23, T1N, R4W	26.0	Birch	Fuel	1037	DFFP	TVSF	4C	Cache Creek Rd
1	NC-2383-F	1	Grouse View Spruce	Sections 23 & 26, T3S, R6W	69.1	White Spruce	Sawlog	566	DFFP	TVSF	5A	Nenana Ridge Rd
1	NC-2510-F-1	1	NWP118	Section 33, T1N, R4W	53.7	White Spruce	Sawlog	440	DFFP	TVSF	4C	Cache Creek Rd
1	NC-2510-F-2	1	NWP118	Sections 32 & 33, T1N, R4W	50.2	White Spruce	Sawlog	412	DFFP	TVSF	4C	Cache Creek Rd
1	NC-2539-F	1	Halfway Salvage	Section 28, T2S, R5W	6.6	Mixed	Fuel	111	DFFP	TVSF	5A	Nenana Ridge Rd
1	NC-2562-F	7	Two Rivers West Aspen Habitat Treatment	Section 14, T1N, R3E	69.2	Aspen		0	DFFP	TVSF	6	Shear blade to reset succession for grouse & moose habitat
1	NC-2563-F	6	Fire's Edge Spruce	Sections 20, 21, 28, 29, T2S, R4W	38.2	White Spruce White Spruce	Sawlog Fuel	310 211	DFFP	TVSF	5A	Bonanza Creek Rd
1	NC-2564-F	1	Birch Lake Birch	Section 17, T7S, R6E	9.2	Birch White Spruce	Fuel Sawlog	156 16	DMLW/DFFP	ETAP	L-01	Tower Rd
1	NC-2567-F	1	Mosquito Birch	Section 29, T6S, R5E	10.0	Birch	Fuel	200	DFFP	TVSF	7B	Mosquito Creek Rd
1	NC-2568-F	1	Jenny M Hill Birch Re-Offer	Section 6, T1S, R4E	11.6	Birch	Fuel	233	DFFP	TVSF	6	Pheasant Farm Rd

\*all volumes converted from CCF (100 cubic feet). Sawlog Volume: MBF (1,000 board-feet) = 1 CCF \* 0.41. Fuelwood Volume: Cords = 1 CCF / 0.9

DRAFT 2026-2030 Five Year Schedule of Timber Sales  
DFFP – Fairbanks-Delta



DRAFT 2026-2030 Five Year Schedule of Timber Sales  
DFFP – Fairbanks-Delta

**Fairbanks**  
Northern Region

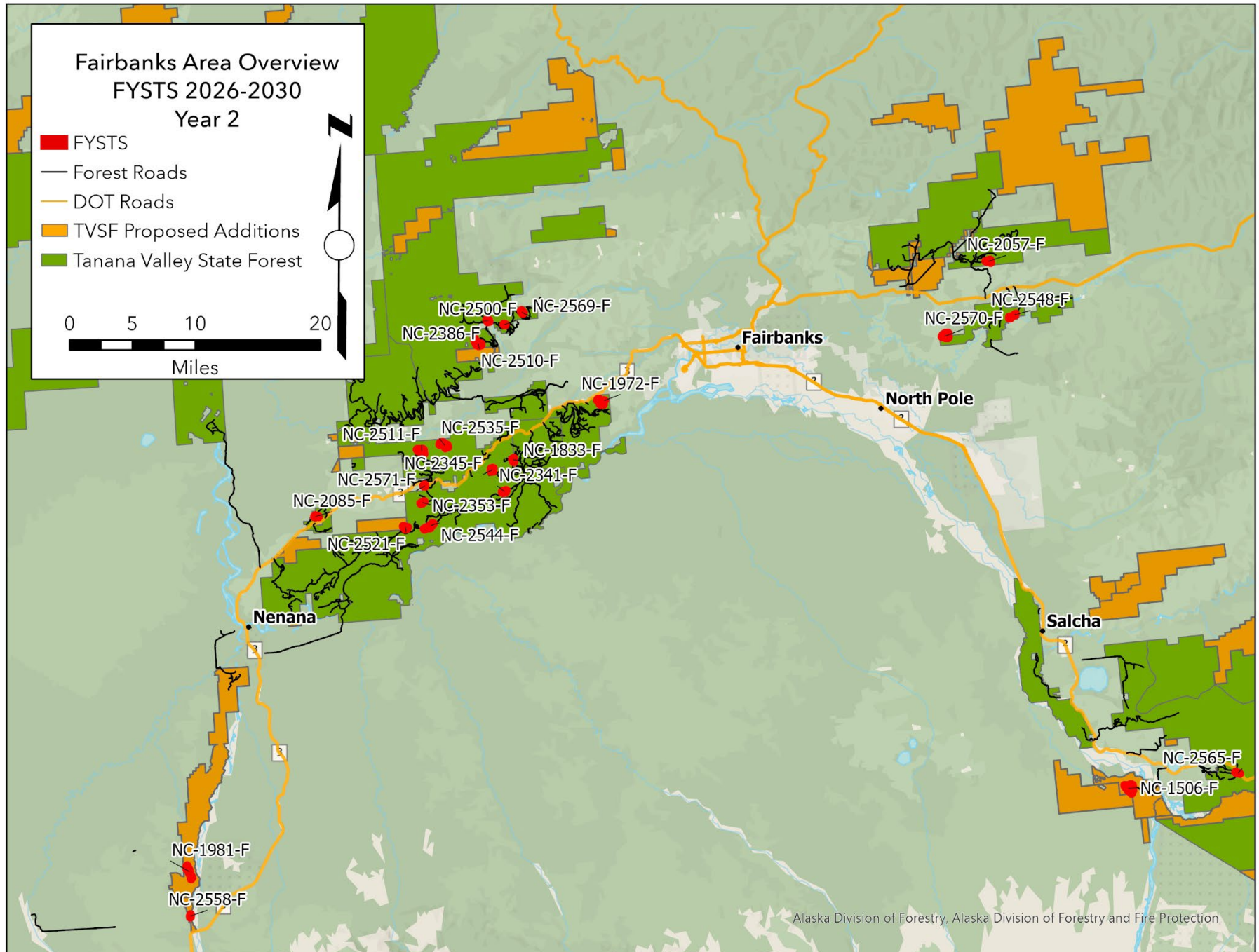
STATE OF ALASKA  
DEPARTMENT OF NATURAL RESOURCES  
DIVISION OF FORESTRY AND FIRE PROTECTION  
TIMBER HARVEST SCHEDULE

**Year 2 of 5**  
July 1, 2027 to June 30, 2028

# of Sales 23  
Total Acres 3,202.5  
Spruce Sawlog (MBF) 5,667  
Fuelwood (Cords) 66,688

FYSTS Year	Sale Number	Units	Sale Name	Legal Description	Acres	Species	Product	Volume*	Land Manager	Area Plan	Management Unit	Road System
2	NC-1506-F	2	Don't Shoot My Mule	Section 20, T7S, R5E	158.6	White Spruce White Spruce	Sawlog Fuel	1610 749	DMLW/DFF P	YTAP	P-41	Salcha area, Richardson Hwy MP 307, winter only
2	NC-1631-F	48	Yukon Crossing	Sections 3-4,7-11,14-17,20- 21,T8S,R9E	2,254.3	Mixed	Fuel	58507	DMLW	none	CL NC-16-001	Galena area biomass
2	NC-1833-F	1	Bonanza Birch #1	Section 16, 21, T2S, R4W	21.7	Birch	Fuel	432	DFFP	TVSF	5A	Bonanza Creek Rd
2	NC-1972-F-3	1	Jack Frost Log Works 118	Sections 26 & 35, T1S, R3W	68.3	White Spruce	Sawlog	836	DFFP	TVSF	5A	Rosie Creek Rd
2	NC-1981-F	1	Beyond Clear Spruce	Sections 23 & 26, T7S, R9W	58.7	White Spruce	Sawlog	517	DMLW	YTAP	P-48	Anderson area, winter only
2	NC-2057-F	1	Two Rivers 3 Mile Birch #2	Section 18, T1N, R4E	32.3	Birch	Fuel	717	DFFP	TVSF	6	Two Rivers Rd, winter only
2	NC-2085-F	3	Little Ag Spruce #4	Section 2, T3S, R7W	17.2	White Spruce Mixed	Sawlog Fuel	114 56	DFFP	TVSF	5A	Little Ag Rd
2	NC-2341-F	1	Chili Bean Mixed	Sections 32 & 33, T2S, R4W	28.5	White Spruce Birch	Sawlog Fuel	159 141	DFFP	TVSF	5A	Bonanza Creek Rd
2	NC-2345-F	1	Cocoa Bean Mixed	Section 20, T2S, R4W	30.8	White Spruce Birch	Sawlog Fuel	316 167	DFFP	TVSF	5A	Bonanza Creek Rd
2	NC-2353-F	1	Golden Foothills Spruce	Section 32, T2S, R5W, Section 5, T3S, R5W	21.1	White Spruce White Spruce	Sawlog Fuel	169 70	DFFP	TVSF	5A	Nenana Ridge Rd, winter only
2	NC-2386-F	1	Fortunate Stone Mixed	Sections 20 & 21, T1N, R4W	23.3	White Spruce Birch	Sawlog Fuel	287 128	DFFP	TVSF	4C	Cache Creek Rd
2	NC-2500-F	1	Flume Mixed	Section 27, T1N, R4W	8.0	White Spruce Birch	Sawlog Fuel	48 28	DFFP	TVSF	4C	Cache Creek Rd
2	NC-2510-F-3	1	NWP118	Sections 31 & 32, T1N, R4W	84.8	White Spruce	Sawlog	696	DFFP	TVSF	4C	Cache Creek Rd
2	NC-2511-F	1	Goldstream Ck Salvage	Sections 8 & 17, T2S, R5W	79.1	Mixed	Fuel	1311	DFFP	TVSF	5A	Skinny's Rd
2	NC-2521-F	1	Bent Loop Birch #1	Section 12, T3S, R6W	38.4	Birch	Fuel	844	DFFP	TVSF	5A	Nenana Ridge Rd
2	NC-2535-F	1	Shady Grove Salvage	Section 10, T2S, R5W	84.7	Mixed	Fuel	1400	DFFP	TVSF	5A	Skinny's Rd
2	NC-2544-F	5	Saddle Birch Stripcut #1	Section 9, T3S, R5W	41.5	Birch	Fuel	911	DFFP	TVSF	5A	Nenana Ridge Rd
2	NC-2548-F	2	Granger than Fiction Mixed	Section 8, T1S, R4E	20.6	White Spruce Birch	Sawlog Fuel	123 178	DFFP	TVSF	6	Grange Hall Rd, winter only
2	NC-2558-F	1	Levee Spruce #2	Section 11, T8S, R9W	9.1	White Spruce Mixed	Sawlog Fuel	45 56	DMLW/DFFP	YTAP	P-30	Anderson area
2	NC-2565-F	2	Canyon Birch Re-Offer	Section 23, T7S, R6E	9.6	Birch	Fuel	111	DFFP	TVSF	7B	Tower Rd
2	NC-2569-F	1	Ridgetop Birch	Section 23, T1N, R4W	20.4	Birch	Fuel	372	DFFP	TVSF	4C	Cache Creek Rd
2	NC-2570-F	1	Moose Creek Mixed	Section 16, T1S, R3E	78.9	White Spruce Birch	Sawlog Fuel	484 444	DFFP	TVSF	6	Pheasant Farm Rd, winter only
2	NC-2571-F	1	Headwater Mixed	Section 29, T2S, R5W	12.6	White Spruce Birch	Sawlog Fuel	129 67	DFFP	TVSF	5A	Nenana Ridge Rd

\*all volumes converted from CCF (100 cubic feet). Sawlog Volume: MBF (1,000 board-feet) = 1 CCF \* 0.41. Fuelwood Volume: Cords = 1 CCF / 0.9



\*Note Galena sale NC-1631-F Yukon Crossing not displayed on this overview map

DRAFT 2026-2030 Five Year Schedule of Timber Sales  
DFFP – Fairbanks-Delta

Fairbanks  
Northern Region

STATE OF ALASKA  
DEPARTMENT OF NATURAL RESOURCES  
DIVISION OF FORESTRY AND FIRE PROTECTION  
TIMBER HARVEST SCHEDULE

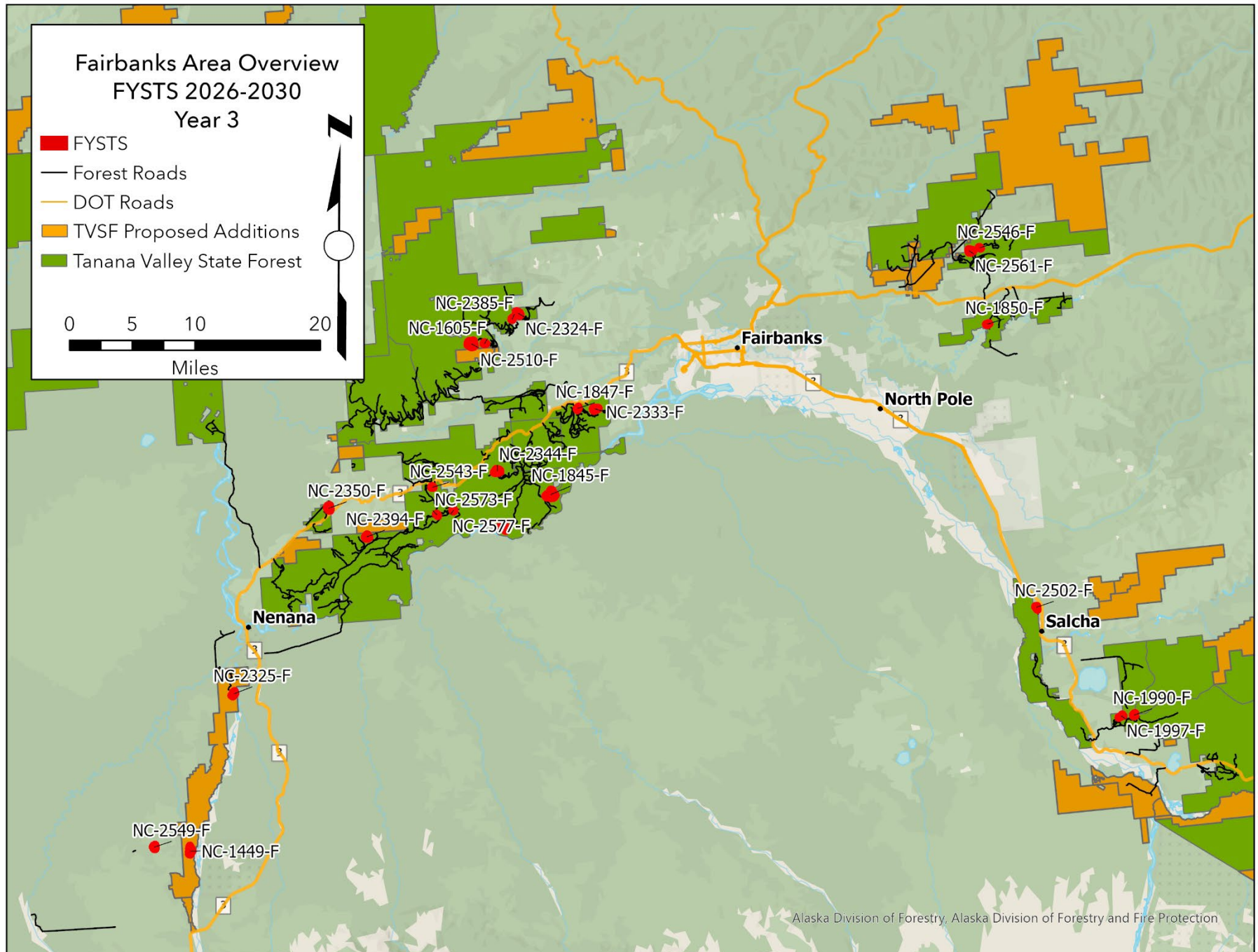
# of Sales 24  
Total Acres 1,618.0  
Spruce Sawlog (MBF) 7,303  
Fuelwood (Cords) 16,997

Year 3 of 5  
July 1, 2028 to June 30, 2029

FYSTS Year	Sale Number	Units	Sale Name	Legal Description	Acres	Species	Product	Volume*	Land Manager	Area Plan	Management Unit	Road System / Remarks
3	NC-1449-F	1	Early Spruce	Sections 14, 23, T7S, R9W	67.4	White Spruce	Sawlog	164	DMLW	YTAP	P-48	Anderson area, winter only
3	NC-1605-F	1	Left Fork Birch #1 Re-sale	Section 32, T1N, R4W	15.7	Birch White Spruce	Fuel Fuel	67 67	DFFP	TVSF	4C	Cache Ck Rd
3	NC-1607-F	16	Serpentine #1	Sections 4-6, 22, 23, 26, 35, T8S, R9E	631.9	Mixed	Fuel	13971	DMLW	YTAP	P-41	Galena Biomass Sale
3	NC-1845-F	1	7 Mile Island North Spruce	Section 36, T2S, R4W; Section 1, T3S, R4W	135.6	White Spruce	Sawlog	1312	DFFP	TVSF	5A	Bonanza Creek Rd, winter only
3	NC-1847-F	1	Pagh Road Spruce #3	Section 33, T1S, R3W	15.5	White Spruce	Sawlog	154	DFFP	TVSF	5A	Rosie Creek Rd
3	NC-1850-F	1	Mullen Floodplain Birch	Section 7, T1S, R4E; Section 12, T1S, R3E	14.6	Birch	Fuel	264	DFFP	TVSF	6	Pheasant Farm Rd, winter only
3	NC-1990-F	1	Mosquito 5 Mile Mixed	Section 21, T6S, R5E	22.2	White Spruce Birch	Sawlog Fuel	91 123	DFFP	TVSF	7B	Mosquito Creek Rd
3	NC-1997-F	1	Mosquito Valley Spruce	Section 20, T6S, R5E	19.1	White Spruce	Sawlog	196	DFFP	TVSF	7B	Mosquito Creek Rd, winter only
3	NC-2324-F	1	Cache 6 Mile Mixed	Section 23, T1N, R4W, F.M.	35.9	Birch White Spruce	Fuel Sawlog	389 70	DFFP	TVSF	4C	Cache Ck Rd
3	NC-2325-F	1	Seventeen Slough Spruce	Sections 9, 16, T5S, R8W	35.1	White Spruce	Sawlog	287	DMLW	YTAP	P-48	Anderson area, winter only
3	NC-2330-F	1	Hot Slough Spruce	Sections 16 & 17, T3S, R4W, F.M.	100.7	White Spruce	Sawlog	1230	DFFP	TVSF	5A	Bonanza Creek Rd, winter only
3	NC-2333-F	1	Rosie Ridge Spruce	Sections 34 & 35, T1S, R3W	53.3	White Spruce	Sawlog	652	DFFP	TVSF	5A	Rosie Creek Rd
3	NC-2344-F	1	Soy Bean Spruce	Section 20, T2S, R4W	63.4	White Spruce White Spruce	Sawlog Fuel	656 352	DFFP	TVSF	5A	Bonanza Creek Rd
3	NC-2350-F	1	Tractor Mixed	Section 36, T2S, R7W	53.3	White Spruce Mixed	Sawlog Fuel	391 336	DFFP	TVSF	5A	Little Ag Rd
3	NC-2385-F	1	Donut Mixed	Sections 23 & 24, T1N, R4W	12.8	White Spruce Birch	Sawlog Fuel	82 67	DFFP	TVSF	4C	Cache Creek Rd
3	NC-2394-F	1	Birch #4 Re-Offer	Section 16 T3S, R6W	51.7	Birch	Fuel	794	DFFP	TVSF	5A	Nenana Ridge Rd
3	NC-2502-F	1	Little Salcha Spruce	Section 5, T5S, R4E	21.4	White Spruce	Sawlog	215	DFFP	TVSF	7A	Salcha area, winter only
3	NC-2510-F-4	1	NWP118	Section 31, T1N, R4W	155.6	White Spruce	Sawlog	1276	DFFP	TVSF	4C	Cache Creek Rd
3	NC-2543-F	1	Checkerboard Spruce	Section 28, T2S, R5W	11.8	White Spruce Birch	Sawlog Fuel	94 67	DFFP	TVSF	5A	Nenana Ridge Rd
3	NC-2546-F	1	Teardrop Mixed	Section 12, T1N, R3E	7.8	White Spruce Birch	Sawlog Fuel	48 44	DFFP	TVSF	6	Two Rivers Rd
3	NC-2549-F	1	Kobe Spruce #1	Section 8, T7S, R9W	29.7	White Spruce Mixed	Sawlog Fuel	176 156	DMLW	YTAP	Within Disposable Interest Lands	Anderson area
3	NC-2561-F	3	Two Rivers Summit Aspen Habitat Treatment	Section 12, T1N, R3E	44.7	Aspen	Fuel	0	DFFP	TVSF	6	Shear blade to reset succession for grouse & moose habitat
3	NC-2573-F	1	Western Birch	Sections 4 & 9, T3S, R5W	10.6	Birch	Fuel	233	DFFP	TVSF	5A	Nenana Ridge Rd
3	NC-2577-F	1	Green Palm Mixed	Section 3, T3S, R5W	8.4	White Spruce Birch	Sawlog Fuel	34 67	DFFP	TVSF	5A	Nenana Ridge Rd

\*all volumes converted from CCF (100 cubic feet). Sawlog Volume: MBF (1,000 board-feet) = 1 CCF \* 0.41. Fuelwood Volume: Cords = 1 CCF / 0.9

DRAFT 2026-2030 Five Year Schedule of Timber Sales  
DFFP – Fairbanks-Delta



*\*Note Galena sale NC-1607-F Serpentine #1 not displayed on this overview map*

DRAFT 2026-2030 Five Year Schedule of Timber Sales

DFFP – Fairbanks-Delta

Fairbanks

Northern Region

STATE OF ALASKA  
DEPARTMENT OF NATURAL RESOURCES  
DIVISION OF FORESTRY AND FIRE PROTECTION  
TIMBER HARVEST SCHEDULE

Year 4 of 5

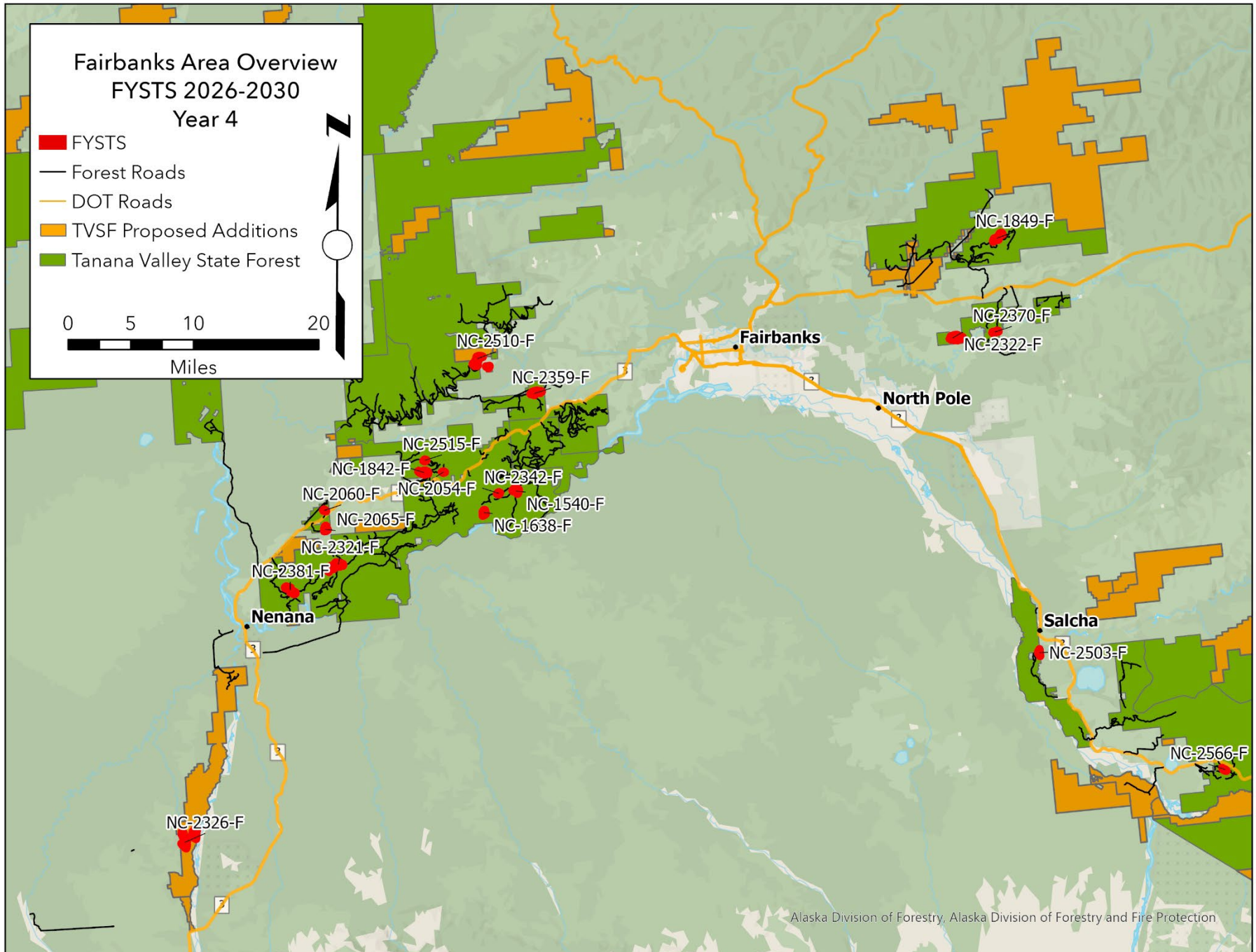
July 1, 2029 to June 30, 2030

# of Sales 20  
Total Acres 1,279.2  
Spruce Sawlog (MBF) 8,527  
Fuelwood (Cords) 8,523

FYSTS Year	Sale Number	Units	Sale Name	Legal Description	Acres	Species	Product	Volume*	Land Manager	Area Plan	Management Unit	Remarks
4	NC-1540-F	1	Bonanza Aspen	Sections 33, 34, T2S, R4W	79.9	Aspen	Fuel	1500	DFFP	TVSF	5A	Bonanza Creek Rd
4	NC-1638-F	1	Bonanza Creek Spruce South	Sections 6, 7, T3S, R4W	47.9	White Spruce	Sawlog	618	DFFP	TVSF	5A	Bonanza Creek Rd
4	NC-1842-F	1	Halfaspruce #4	Sections 20, 21, T2S, R5W	89.6	White Spruce White Spruce	Sawlog Fuel	830 750	DFFP	TVSF	5A	Skinny's Rd
4	NC-1849-F	2	Two Rivers Hillside Birch	Sections 5, 8, T1N, R4E	73.9	Birch White Spruce	Fuel Sawlog	1311 57	DFFP	TVSF	6	Two Rivers Rd
4	NC-2054-F	1	Skinny's Hogback Spruce	Section 22, T2S, R5W	12.0	White Spruce	Sawlog	74	DFFP	TVSF	5A	Skinny's Rd
4	NC-2060-F	1	Little Ag Birch	Section 1, T3S, R7W and Section 36, T2S, R7W	14.1	Birch	Fuel	234	DFFP	TVSF	5A	Little Ag Rd
4	NC-2065-F	1	Little Goldstream Spruce #2	Section 12, T3S, R7W	32.5	White Spruce White Spruce	Sawlog Fuel	200 144	DFFP	TVSF	5A	Parks Hwy MP 316.5
4	NC-2321-F	2	Little Goldstream Birch	Section 30, T3S, R6W, F.M.	146.7	Birch	Fuel	2283	DFFP	TVSF	5A	Upper Grouse Rd
4	NC-2322-F	3	Pottatch Creek Mixed	Section 15, T1S, R3E	120.7	White Spruce Birch	Sawlog Fuel	738 667	DFFP	TVSF	6	Pheasant Farm Rd, winter only
4	NC-2326-F	3	Lost Nenana Spruce	Sections 1, 2, 11, 12, T7S, R9W, F.M.	260.7	White Spruce White Spruce	Sawlog Fuel	2132 426	DMLW	YTAP	P-48	Anderson area, winter only
4	NC-2342-F	1	Green Bean Mixed	Section 32, T2S, R4W	18.9	White Spruce Birch	Sawlog Fuel	105 93	DFFP	TVSF	5A	Bonanza Creek Rd
4	NC-2359-F	4	Std Creek Leave Strips	Sections 24, 25, 26, T1S, R4W	60.3	White Spruce White Spruce	Sawlog Fuel	492 333	DFFP	TVSF	5A	Standard Creek Rd
4	NC-2370-F	1	Mullen Island Spruce	Section 18, T1S, R4E	24.0	White Spruce	Sawlog	295	DFFP	TVSF	6	Pheasant Farm Rd, winter only
4	NC-2381-F	1	Pocket Mixed	Section 33, T3S, R7W, Section 4, T4S, R7W	94.6	White Spruce Birch	Sawlog Fuel	1164 526	DFFP	TVSF	5A	Maisch Rd / Parks Hwy MP 312
4	NC-2503-F	1	Old Valdez Spruce	Sections 20 & 29, T5S, R4E	32.8	White Spruce	Sawlog	332	DFFP	TVSF	7A	Old Valdez Trl, Richardson Hwy MP 318
5	NC-2510-F-5	1	NWP118	Section 8, T1S, R4W	17.8	White Spruce	Sawlog	146	DFFP	TVSF	4C	Standard East Rd
5	NC-2510-F-6	1	NWP118	Section 7, T1S, R4W	43.5	White Spruce	Sawlog	356	DFFP	TVSF	4C	Standard East Rd
5	NC-2510-F-7	1	NWP118	Sections 5, 6, 7, T1S, R4W	76.1	White Spruce	Sawlog	624	DMLW/ DFFP	ETAP	F-37	Standard East Rd
4	NC-2515-F	1	Switchback Spruce	Sections 16 & 17, T2S, R5W	15.5	White Spruce White Spruce	Sawlog Fuel	160 50	DFFP	TVSF	5A	Skinny's Rd
4	NC-2566-F	1	Telephone Birch	Section 15, T7S, R6E	17.8	Birch	Fuel	206	DFFP	TVSF	7B	Tower Rd

\*all volumes converted from CCF (100 cubic feet). Sawlog Volume: MBF (1,000 board-feet) = 1 CCF \* 0.41. Fuelwood Volume: Cords = 1 CCF / 0.9

DRAFT 2026-2030 Five Year Schedule of Timber Sales  
DFFP – Fairbanks-Delta



DRAFT 2026-2030 Five Year Schedule of Timber Sales  
DFFP – Fairbanks-Delta

Fairbanks  
Northern Region

STATE OF ALASKA  
DEPARTMENT OF NATURAL RESOURCES  
DIVISION OF FORESTRY AND FIRE PROTECTION  
TIMBER HARVEST SCHEDULE

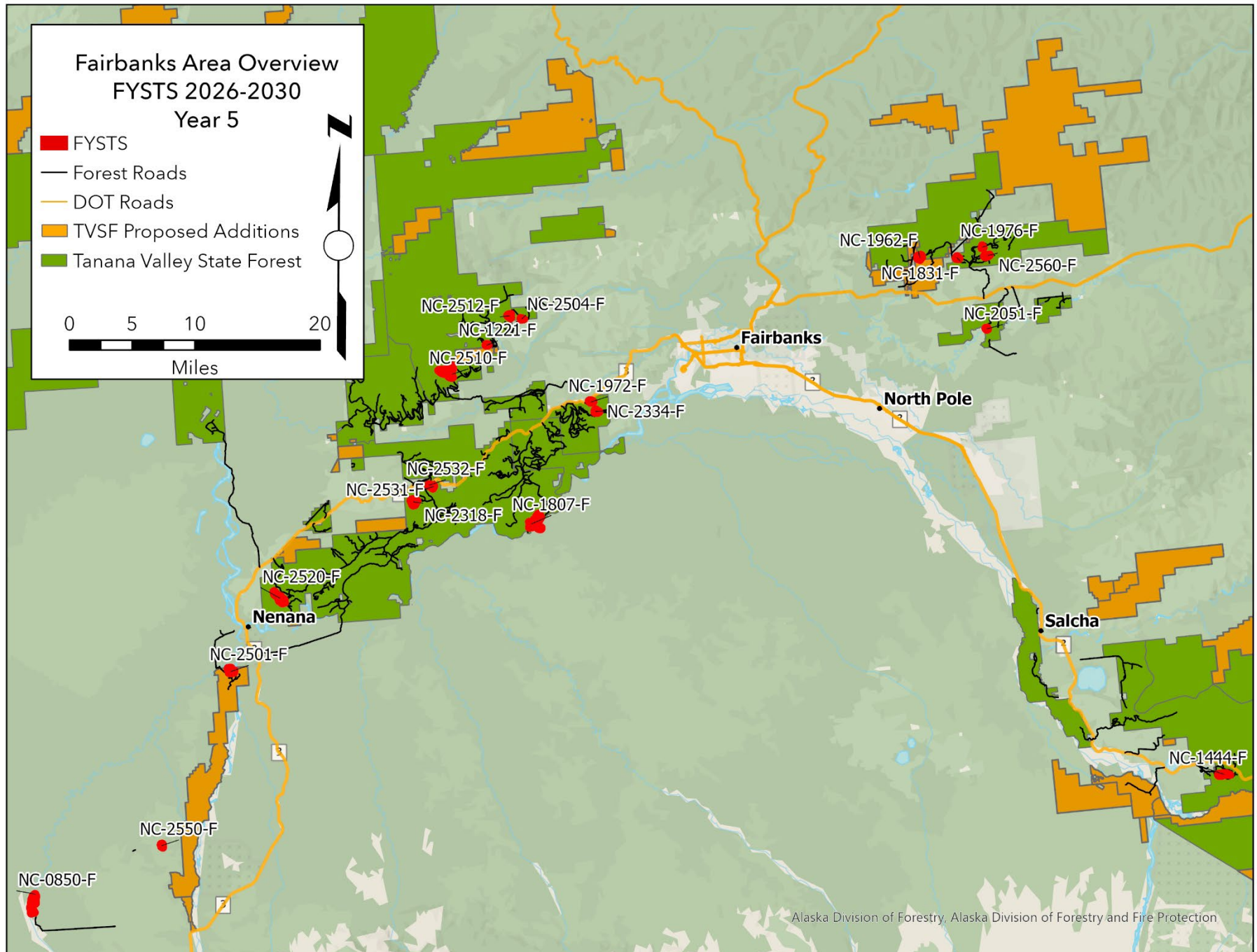
Year 5 of 5  
July 1, 2030 to June 30, 2031

# of Sales 23  
Total Acres 1,300.6  
Spruce Sawlog (MBF) 9,928  
Fuelwood (Cords) 4,258

FYSTS Year	Sale Number	Units	Sale Name	Legal Description	Acres	Species	Product	Volume*	Land Manager	Area Plan	Management Unit	Remarks
5	NC-0850-F	1	Teklanika Spruce #1	Section 34, T7S, R34W	207.1	White Spruce	Sawlog	1681	DMLW/DF FP	YTAP	P-25	Anderson area, winter only
5	NC-1221-F	1	Left Fork Birch #2	Section 32, T1N, R4W	13.6	White Spruce Birch	Sawlog Fuel	53 54	DFFP	TVSF	4C	Cache Creek Rd
5	NC-1444-F	1	Cellular Spruce	Sections 22, 23, T7S, R6E	76.1	White Spruce	Sawlog	513	DFFP	TVSF	7B	Tower Rd
5	NC-1807-F	3	Seven Mile Island #4	Section 11, 14 T3S, R4W	210.3	White Spruce	Sawlog	2571	DFFP	TVSF	5A	Bonanza Creek Rd, winter only
5	NC-1831-F	1	Two Rivers East Mixed	Sections 14, 15, T1N, R3E	22.9	White Spruce Birch	Sawlog Fuel	141 128	DFFP	TVSF	6	Two Rivers Rd
5	NC-1957-F	1	Tatalina Ridge Spruce	Section 8, 17, T6N, R4W	43.9	White Spruce Birch	Sawlog Fuel	176 239	DMLW	YTAP	T-50/T-51	Elliot Hwy MP 45, Forest-Classified & General State Land, access via TAPS
5	NC-1962-F	1	Little Chena Spruce #2	Section 8, T1N, R3E	55.0	White Spruce	Sawlog	451	DFFP	TVSF	6	Chena Hot Springs Rd MP 11, winter only
5	NC-1972-F-2	1	Jack Frost Log Works 118	Section 27, T1S, R3W	28.5	White Spruce	Sawlog	344	DFFP	TVSF	5A	Rosie Creek Rd
5	NC-1976-F	1	Two Rivers 8 Mile Birch	Section 7, T1N, R4E	9.6	Birch	Fuel	164	DFFP	TVSF	6	Two Rivers Rd
5	NC-2051-F	1	Mullen Floodplain Birch #2	Section 13, T1S, R3E	13.5	Birch	Fuel	244	DFFP	TVSF	6	Pheasant Farm Rd, winter only
5	NC-2318-F	1	Parks Ridge Spruce	Sections 31 & 32, T2S, R5W, Section 6, T3S, R5W, F.M.	92.0	White Spruce White Spruce	Sawlog Fuel	830 444	DFFP	TVSF	5A	Nenana Ridge Rd, winter only
5	NC-2334-F	1	Rosie Leave Strip Spruce	Sections 34 & 35, T1S, R3W	28.9	White Spruce	Sawlog	355	DFFP	TVSF	5A	Rosie Creek Rd
5	NC-2501-F	2	Serpentine Spruce	Section 4, T5S, R8W	66.5	White Spruce	Sawlog	583	DMLW/DF FP	YTAP	P-48	Nenana Area Spruce
5	NC-2504-F	1	Scholarship Spruce	Section 23, T1N, R4W	12.6	White Spruce Birch	Sawlog Fuel	129 67	DFFP	TVSF	4C	Cache Creek Rd
5	NC-2510-F-8	1	NWP118	Section 11, T1S, R5W	53.2	White Spruce	Sawlog	436	DFFP	TVSF	4C	Standard East Rd
5	NC-2510-F-9	1	NWP118	Sections 11, 14, T1S, R5W	46.4	White Spruce	Sawlog	380	DFFP	TVSF	4C	Standard East Rd
5	NC-2510-F-10	1	NWP118	Section 10, T1S, R5W	63.2	White Spruce	Sawlog	518	DFFP	TVSF	4C	Standard East Rd
5	NC-2512-F	1	Cache Nose Mixed	Section 22, T1N, R4W	41.0	White Spruce Birch	Sawlog Fuel	252 228	DFFP	TVSF	4C	Cache Creek Rd
5	NC-2520-F	1	Back Pocket Birch	Sections 5 & 8, T4S, R7W	135.6	Birch	Fuel	2250	DFFP	TVSF	5A	Maisch Rd / Parks Hwy MP 312
5	NC-2531-F	1	Halfway Birch	Section 28, T2S, R5W	14.5	Birch White Spruce	Fuel Sawlog	244 29	DFFP	TVSF	5A	Nenana Ridge Rd
5	NC-2532-F	1	Parks Edge Spruce #1	Section 28, T2S, R5W	11.2	White Spruce Birch	Sawlog Fuel	92 61	DFFP	TVSF	5A	Nenana Ridge Rd
5	NC-2550-F	1	Kobe Spruce #2	Section 9, T7S, R9W	25.5	White Spruce Mixed	Sawlog Fuel	156 133	DMLW	YTAP	P-16	Anderson area
5	NC-2560-F	2	Two Rivers Ridge Aspen Habitat Treatment	Section 18, T1N, R4E	29.4	Aspen	Fuel	0	DFFP	TVSF	6	Shear blade to reset succession for grouse & moose habitat

\*all volumes converted from CCF (100 cubic feet). Sawlog Volume: MBF (1,000 board-feet) = 1 CCF \* 0.41. Fuelwood Volume: Cords = 1 CCF / 0.9

DRAFT 2026-2030 Five Year Schedule of Timber Sales  
DFFP – Fairbanks-Delta



**FY2026-2030 DELTA AREA  
INDIVIDUAL TIMBER HARVEST SCHEDULE**

**Delta**  
Northern Region

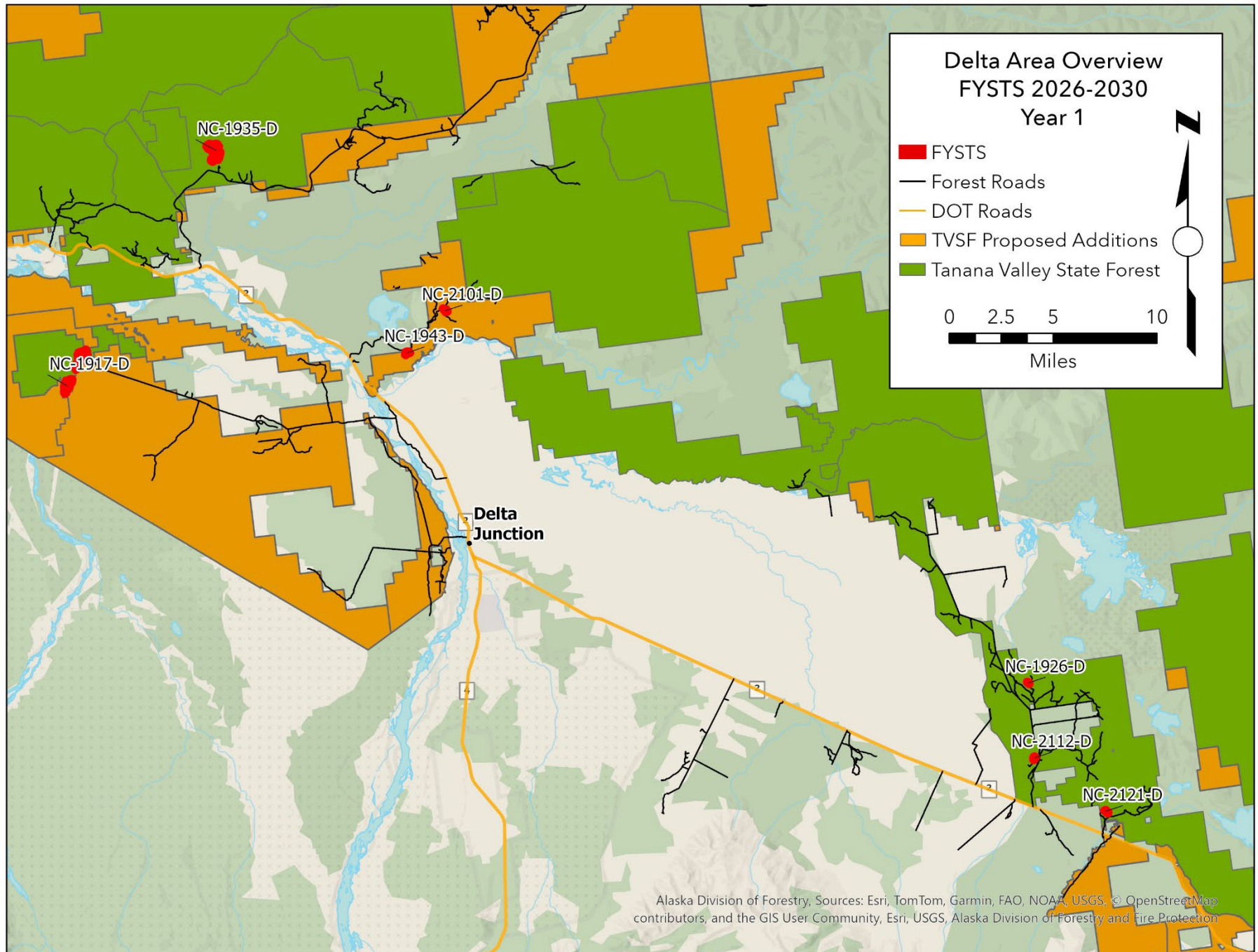
STATE OF ALASKA  
DEPARTMENT OF NATURAL RESOURCES  
DIVISION OF FORESTRY AND FIRE PROTECTION  
TIMBER HARVEST SCHEDULE  
**Year 1 of 5**  
July 1, 2026 to June 30, 2027

# of Sales 7  
Total Acres 381.2  
Spruce Sawlog (MBF) 2,651  
Fuelwood (Cords) 1,240

FYSTS Year	Sale Number	Units	Sale Name	Legal Description	Acres	Species	Product	Volume*	Land Manager	Area Plan	Management Unit	Remarks
1	NC-1917-D	3	Delta Creek Winter Spruce	Sections 22-23, T8S, R7E	174.2	White Spruce	Sawlog	1070	DFFP	TVSF	8A	Delta Creek Rd, winter only
1	NC-1926-D	1	Woodstove Spruce #5	Section 6, T12S, R15E	5.1	White Spruce White Spruce	Sawlog Fuel	43 24	DFFP	TVSF	10C	Cummings Rd
1	NC-1935-D	3	Greenstone Spruce	Section 36, T6S, R8E, Section 1, T7S, R8E	156.5	White Spruce Mixed	Sawlog Fuel	1215 867	DFFP	TVSF	8C	Pogo Mine Rd
1	NC-1943-D	1	Dune Mixed	Section 32, T8S, R10E	15.4	White Spruce Birch	Sawlog Fuel	94 83	DMLW/DF FP	ETAP	D-12	Quartz Lake Extension Rd
1	NC-2101-D	1	Agate Birch	Section 22, T8S, R10E	11.5	Birch	Fuel	192	DMLW/DF FP	ETAP	D-12	Quartz Lake Extension Rd
1	NC-2112-D	1	Zeta Spruce	Section 30, T12S, R15E	7.0	White Spruce White Spruce	Sawlog Fuel	57 34	DFFP	TVSF	10C	Cummings Rd
1	NC-2121-D	1	Little Gerstle Spruce #4	Section 11, T13S, R15E	11.6	White Spruce White Spruce	Sawlog Fuel	109 39	DFFP	TVSF	10C	Alaska Hwy MP 1389

*\*all volumes converted from CCF (100 cubic feet). Sawlog Volume: MBF (1,000 board-feet) = 1 CCF \* 0.41. Fuelwood Volume: Cords = 1 CCF / 0.9*

DRAFT 2026-2030 Five Year Schedule of Timber Sales  
DFFP – Fairbanks-Delta



**Delta**  
Northern Region

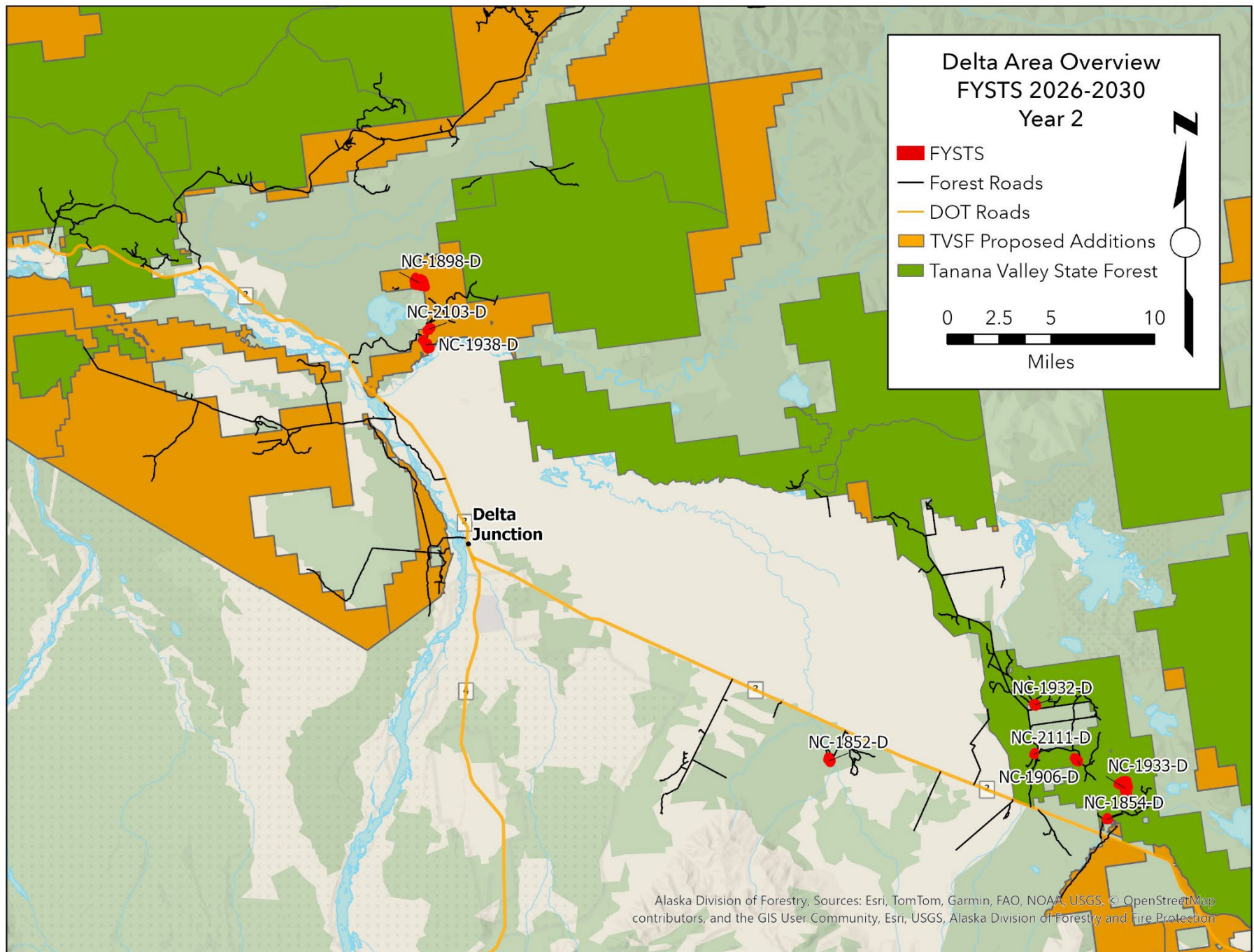
STATE OF ALASKA  
DEPARTMENT OF NATURAL RESOURCES  
DIVISION OF FORESTRY AND FIRE PROTECTION  
TIMBER HARVEST SCHEDULE  
**Year 2 of 5**  
July 1, 2027 to June 30, 2028

# of Sales 9  
Total Acres 370.0  
Spruce Sawlog (MBF) 3,220  
Fuelwood (Cords) 673

FYSTS Year	Sale Number	Units	Sale Name	Legal Description	Acres	Species	Product	Volume*	Land Manager	Area Plan	Management Unit	Remarks
2	NC-1852-D	1	Sawmill Creek #2 Re-Sale	Sections 16, 21, T12S, R13E	17.8	White Spruce Mixed	Sawlog Fuel	146 32	DFG	ETAP	DJBR	Alaska Hwy MP 1402
2	NC-1854-D	1	Little Gerstle Spruce #2	Section 11, T13S, R15E	8.2	White Spruce White Spruce	Sawlog Fuel	76 22	DFFP	TVSF	10C	Alaska Hwy MP 1389
2	NC-1898-D	1	Deuce Spruce	Sections 9-10, T8S, R10E	95.5	White Spruce	Sawlog	979	DMLW	ETAP	D-12	Quartz Lake Extension Road
2	NC-1906-D	2	Cummings East Spruce #2	Section 28, T12S, R15E	20.6	White Spruce White Spruce	Sawlog Fuel	61 41	DFFP	TVSF	10C	Cummings Road
2	NC-1932-D	1	Woodstove Spruce #4	F012S015E06	13.4	White Spruce White Spruce	Sawlog Fuel	93 44	DFFP	TVSF	10C	Cummings Road
2	NC-1933-D	1	Black Lake Bluff Spruce	Section 1, T13S, R15E	150.0	White Spruce	Sawlog	1466	DFFP	TVSF	10C	Alaska Hwy MP 1389, winter only
2	NC-1938-D	1	Sapphire Mixed	Section 28, T8S, R10E	43.6	White Spruce White Spruce	Sawlog Fuel	284 239	DMLW/DF FP	ETAP	D-12	Quartz Lake Extension Road
2	NC-2103-D	1	Amethyst Birch	Sections 22, 27, 28, T8S, R10E	16.2	Birch	Fuel	270	DMLW/DF FP	ETAP	D-12	Quartz Lake Extension Road
2	NC-2111-D	1	Epsilon Spruce	Section 30, T12S, R15E	4.8	White Spruce White Spruce	Sawlog Fuel	40 24	DFFP	TVSF	10C	Cummings Road

\*all volumes converted from CCF (100 cubic feet). Sawlog Volume: MBF (1,000 board-feet) = 1 CCF \* 0.41. Fuelwood Volume: Cords = 1 CCF / 0.9

DRAFT 2026-2030 Five Year Schedule of Timber Sales  
DFFP – Fairbanks-Delta



**Delta**  
Northern Region

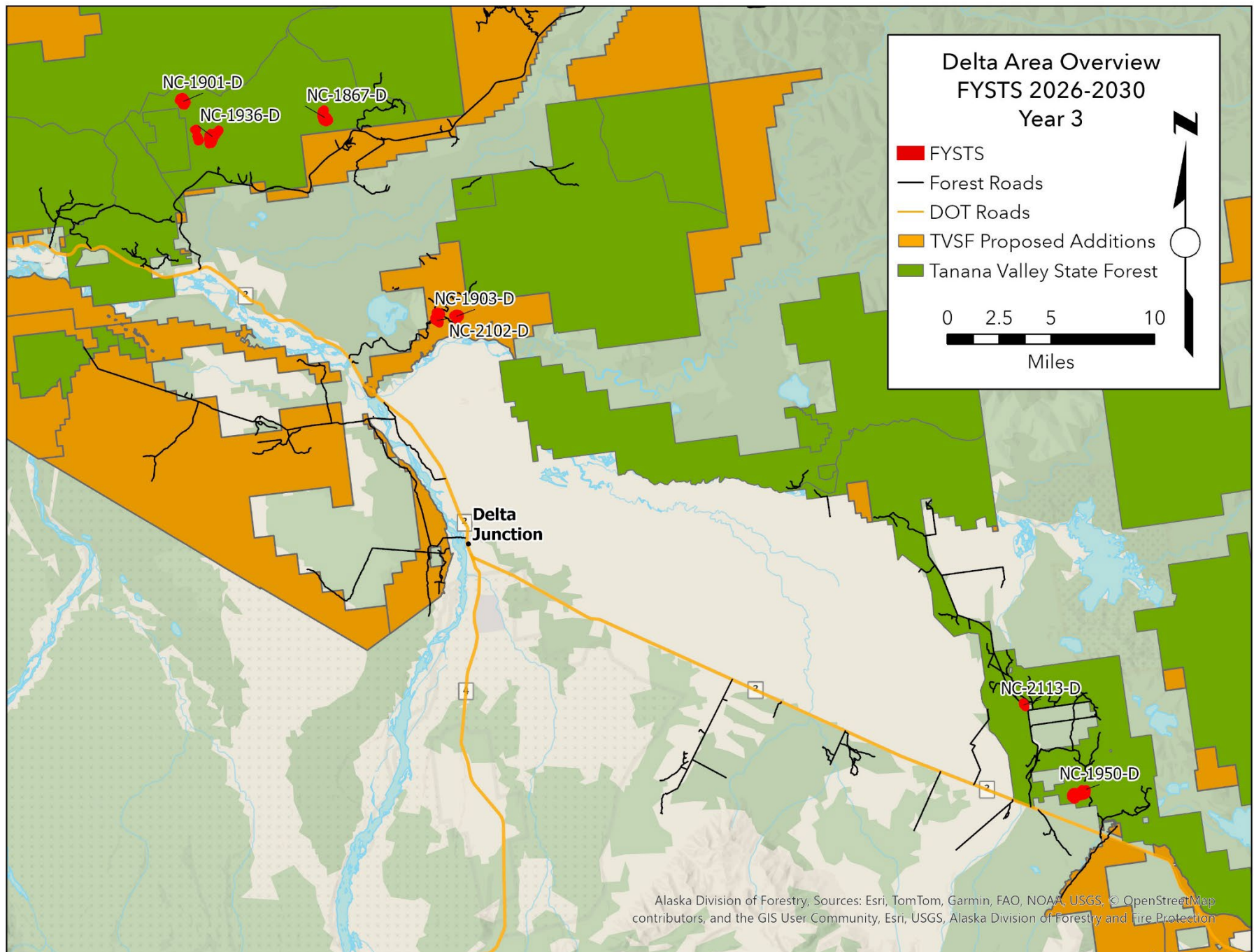
STATE OF ALASKA  
DEPARTMENT OF NATURAL RESOURCES  
DIVISION OF FORESTRY AND FIRE PROTECTION  
TIMBER HARVEST SCHEDULE  
**Year 3 of 5**  
July 1, 2028 to June 30, 2029

# of Sales 7  
Total Acres 435.7  
Spruce Sawlog (MBF) 1,989  
Fuelwood (Cords) 2,968

FYSTS Year	Sale Number	Units	Sale Name	Legal Description	Acres	Species	Product	Volume*	Land Manager	Area Plan	Management Unit	Remarks
3	NC-1867-D	1	Rowland #8	Section 36, T6S, R9E	65.2	Birch	Fuel	941	DFFP	TVSF	8C	Pogo Rd
3	NC-1901-D	3	Upper Keystone Fire Salvage	Sections 23, 26, 35, & 36, T6S, R8E	74.8	White Spruce	Fuel	498	DFFP	TVSF	8C	Pogo Rd, fire salvage, winter only
3	NC-1903-D	1	Garnet Spruce	Section 23, T8S, R10E	33.3	White Spruce	Sawlog	205	DMLW	ETAP	D-12	Quartz Lake Extension Rd
3	NC-1936-D	2	Greenstone Mixed	Sections 31 & 36, T6S, R8E	89.7	White Spruce Mixed	Sawlog Fuel	551 498	DFFP	TVSF	8C	Pogo Rd
3	NC-1950-D	1	Gerstle Saddle Spruce	Sections 3 & 4, T13S, R15E	117.5	White Spruce Birch	Sawlog Fuel	1107 644	DFFP	TVSF	10C	Cummings Rd, winter only
3	NC-2102-D	2	Amber Birch	Section 22, T8S, R10E	45.7	Birch	Fuel	339	DMLW/DF FP	ETAP	D-12	Quartz Lake Extension Rd
3	NC-2113-D	1	Theta Spruce	Section 7, T12S, R15E	9.6	White Spruce White Spruce	Sawlog Fuel	78 48	DFFP	TVSF	10C	Cummings Rd

*\*all volumes converted from CCF (100 cubic feet). Sawlog Volume: MBF (1,000 board-feet) = 1 CCF \* 0.41. Fuelwood Volume: Cords = 1 CCF / 0.9*

DRAFT 2026-2030 Five Year Schedule of Timber Sales  
DFFP – Fairbanks-Delta



**Delta**  
Northern Region

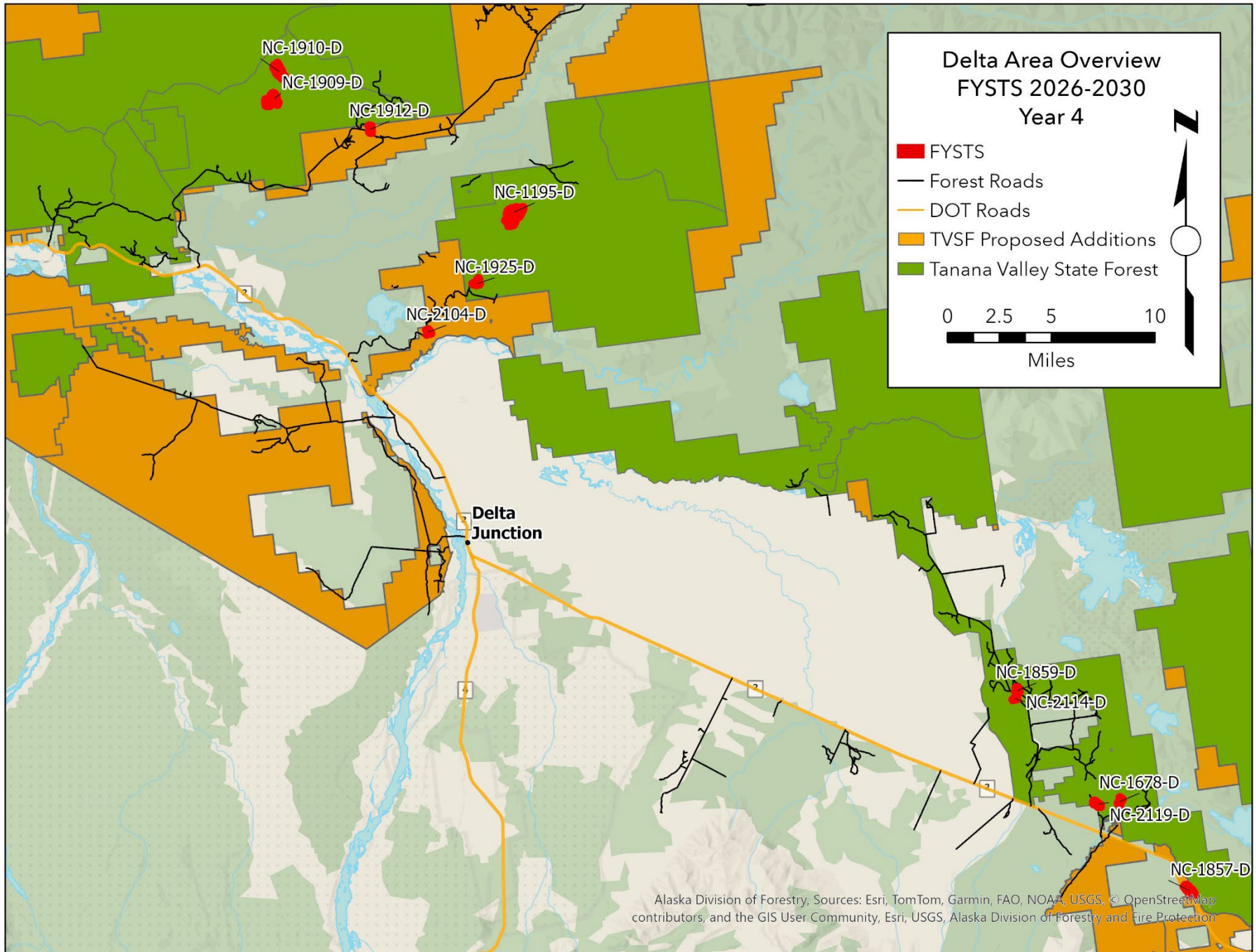
STATE OF ALASKA  
DEPARTMENT OF NATURAL RESOURCES  
DIVISION OF FORESTRY AND FIRE PROTECTION  
TIMBER HARVEST SCHEDULE  
**Year 4 of 5**  
July 1, 2029 to June 30, 2030

# of Sales 11  
Total Acres 711.2  
Spruce Sawlog (MBF) 3,556  
Fuelwood (Cords) 2,118

FYSTS Year	Sale Number	Units	Sale Name	Legal Description	Acres	Species	Product	Volume*	Land Manager	Area Plan	Management Unit	Remarks
4	NC-1195-D	1	Rapid Creek #1	Sections 28, 29, 33, T7S, R11E	208.6	White Spruce	Sawlog	1880	DFFP	TVSF	9A	Quartz Lake Extension Rd, winter only
4	NC-1678-D	1	Back N Black #1	Sections 1, 12, T13S, R15E	26.3	White Spruce	Sawlog	256	DFFP	TVSF	10C	Alcan Hwy MP 1389, winter only
4	NC-1857-D	1	Alcan Mile 1384 Spruce	Sections 32, 33, T13S, R16E	78.6	White Spruce	Sawlog	480	DMLW	ETAP	D-58	Alcan Hwy MP 1384
4	NC-1859-D	1	Cliffhanger #3	Sections 1, 12, T12S, R14E	32.4	White Spruce White Spruce	Sawlog Fuel	262 250	DFFP	TVSF	10C	Cummings Rd
4	NC-1909-D	2	Caribou Creek Fire Salvage #1	Sections 21, 27, 28, T6S, R9E	124.2	Mixed	Fuel	217	DFFP	TVSF	8C	Pogo Rd, fire salvage, winter only
4	NC-1910-D	1	Caribou Creek Fire Salvage #2	Sections 15 & 22, T6S, R9E	126.7	Mixed	Fuel	703	DFFP	TVSF	8C	Pogo Rd, fire salvage, winter only
4	NC-1912-D	1	Pogo Mile 14 Spruce	Section 5, T7S, R10E	23.4	White Spruce	Sawlog	192	DMLW	ETAP	D-10	Pogo Rd
4	NC-1925-D	3	Deja View Birch	Section 13, T8S, R10E	26.1	Birch	Fuel	436	DFFP	TVSF	9A	Quartz Lake Extension Rd
4	NC-2104-D	1	Calcite Birch	Sections 27 & 28, T8S, R10E	21.3	Birch	Fuel	354	DMLW/DF FP	ETAP	D-12	Quartz Lake Extension Rd
4	NC-2114-D	1	Kappa Spruce	Section 12, T12S, R14E	7.8	White Spruce White Spruce	Sawlog Fuel	64 39	DFFP	TVSF	10C	Cummings Rd
4	NC-2119-D	1	Gerstana Spruce #2	Sections 2, 3, 11, T13S, R15E	35.7	White Spruce White Spruce	Sawlog Fuel	337 119	DFFP	TVSF	10C	Alcan Hwy MP 1389

\*all volumes converted from CCF (100 cubic feet). Sawlog Volume: MBF (1,000 board-feet) = 1 CCF \* 0.41. Fuelwood Volume: Cords = 1 CCF / 0.9

DRAFT 2026-2030 Five Year Schedule of Timber Sales  
DFFP – Fairbanks-Delta



**Delta**  
Northern Region

STATE OF ALASKA  
DEPARTMENT OF NATURAL RESOURCES  
DIVISION OF FORESTRY AND FIRE PROTECTION  
TIMBER HARVEST SCHEDULE  
**Year 5 of 5**  
July 1, 2030 to June 30, 2031

# of Sales 12  
Total Acres 391.1  
Spruce Sawlog (MBF) 2,748  
Fuelwood (Cords) 1,932

FYSTS Year	Sale Number	Units	Sale Name	Legal Description	Acres	Species	Product	Volume*	Land Manager	Area Plan	Management Unit	Remarks
5	NC-1726-D	1	Back N Black #3	Sections 25, 26, 35, 36, T12S, R15E	100.6	White Spruce	Sawlog	820	DFFP	TVSF	10C	Alcan Hwy MP 1389, winter only
5	NC-1860-D	1	Alcan Mile 1384 Birch	Section 32, T13S, R16E	19.9	Birch	Fuel	378	DMLW	ETAP	D-56	Alcan Hwy MP 1384
5	NC-1868-D	1	Rowland #10	Section 26, T6S, R9E	35.1	White Spruce	Sawlog	287	DFFP	TVSF	8C	Pogo Rd, winter only
5	NC-1916-D	1	Woodstove Spruce #3	Section 6, T12S, R15E	13.1	White Spruce White Spruce	Sawlog Fuel	110 63	DFFP	TVSF	10C	Cummings Rd
5	NC-1944-D	1	Sandworm Mixed	Section 32, T8S, R10E	25.6	White Spruce Birch	Sawlog Fuel	157 141	DMLW/DF FP	ETAP	D-12	Quartz Lake Extension Rd
5	NC-1945-D	1	Bert's Island Spruce	Section 32, T8S, R10E	28.9	White Spruce Birch	Sawlog Fuel	246 161	DMLW/DF FP	ETAP	D-12	Quartz Lake Extension Rd
5	NC-1947-D	1	Sawtooth Spruce #1	Sections 28 & 29, T12S, R15E	30.3	White Spruce White Spruce	Sawlog Fuel	148 100	DFFP	TVSF	10C	Cummings Rd
5	NC-2106-D	1	Cinnabar Birch	Section 27, T8S, R10E	15.8	Birch	Fuel	262	DMLW/DF FP	ETAP	D-12	Quartz Lake Extension Rd
5	NC-2110-D	1	Gamma Spruce	Section 30, T12S, R15E	3.8	White Spruce White Spruce	Sawlog Fuel	31 19	DFFP	TVSF	10C	Cummings Rd
5	NC-2115-D	1	Lambda Spruce	Section 1, T12S, R14E	12.7	White Spruce White Spruce	Sawlog Fuel	105 63	DFFP	TVSF	10C	Cummings Rd
5	NC-2116-D	1	Gerstle Leave Strip Spruce	Section 26, 35, 36, T11S, R14E	94.3	White Spruce White Spruce	Sawlog Fuel	779 522	DFFP	TVSF	10C	Cummings Rd
5	NC-2123-D	1	Emerald Birch	Section 22, T8S, R10E	11.1	Birch	Fuel	222	DMLW	ETAP	D-12	Quartz Lake Extension Rd

\*all volumes converted from CCF (100 cubic feet). Sawlog Volume: MBF (1,000 board-feet) = 1 CCF \* 0.41. Fuelwood Volume: Cords = 1 CCF / 0.9

DRAFT 2026-2030 Five Year Schedule of Timber Sales  
DFFP – Fairbanks-Delta

