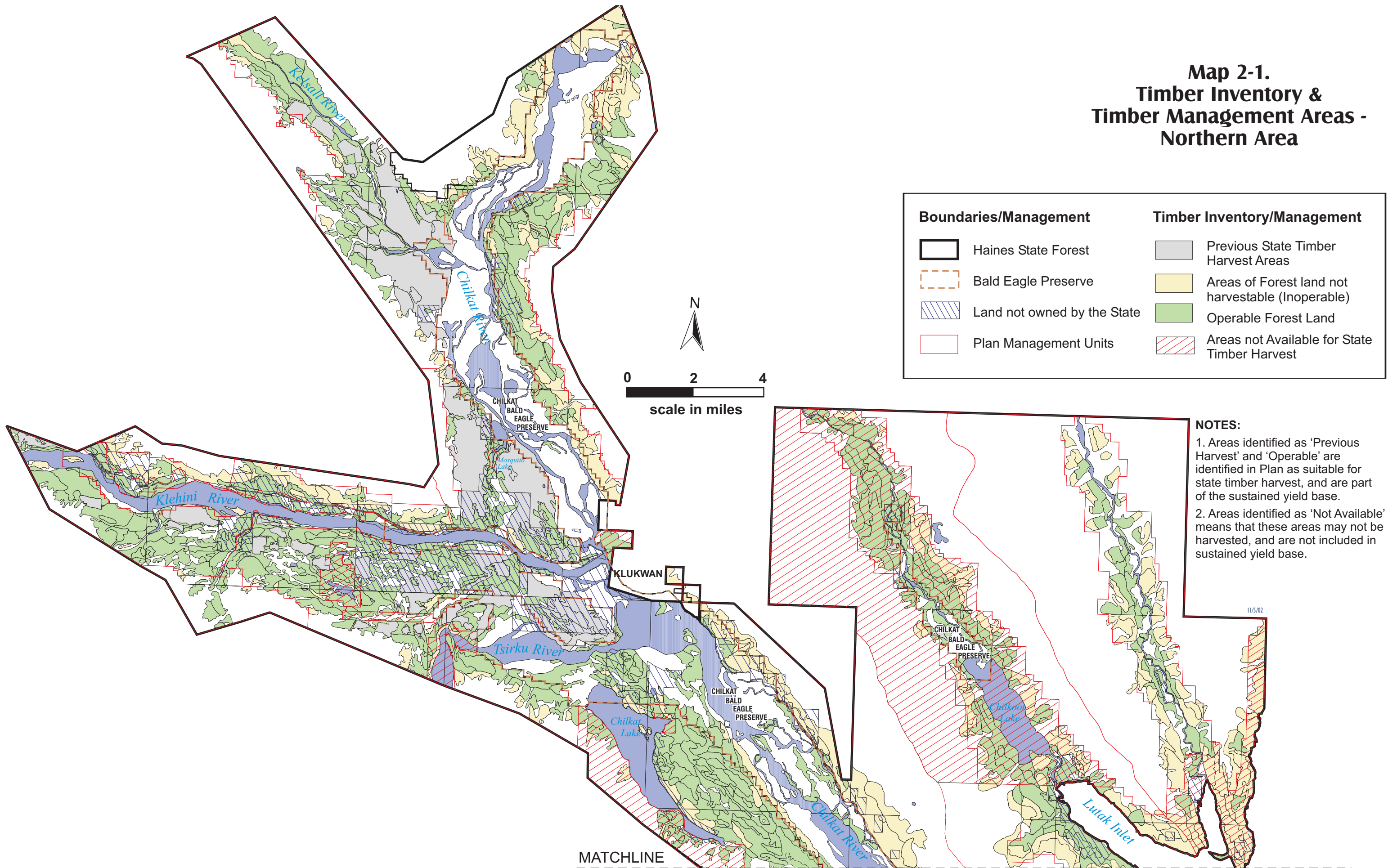
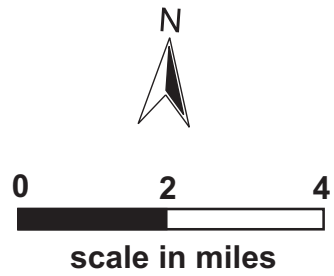


## Map 2-1. Timber Inventory & Timber Management Areas - Northern Area



Boundaries/Management		Timber Inventory/Management	
	Haines State Forest		Previous State Timber Harvest Areas
	Bald Eagle Preserve		Areas of Forest land not harvestable (Inoperable)
	Land not owned by the State		Operable Forest Land
	Plan Management Units		Areas not Available for State Timber Harvest



**NOTES:**

1. Areas identified as 'Previous Harvest' and 'Operable' are identified in Plan as suitable for state timber harvest, and are part of the sustained yield base.
2. Areas identified as 'Not Available' means that these areas may not be harvested, and are not included in sustained yield base.

11/5/02